

CROMWELL CRESCENT, KENSINGTON, SW5





Key Features

- Lovely apartment with two double bedrooms
- Large reception room with tall windows
- Fitted modern kitchen
- Private terrace and balcony
- Well managed building

Description

An exquisitely presented and character-filled two bedroom apartment set on the first floor of this elegant stucco fronted Victorian building in Kensington. The apartment comprises a large and bright reception room with wooden floors throughout and tall windows leading through to the lovely private terrace, separate modern fully fitted kitchen, spacious master double bedroom with large fitted wardrobes and access to the balcony overlooking the rear of the building, second double bedroom with fitted wardrobes and a family bathroom.

Situation

Cromwell Crescent is ideally located for all of the amenities, shops and restaurants of Earls Court and High Street Kensington and for the open spaces of Holland Park. The nearest underground station is Earls Court, which is just a short walk away (Piccadilly, District & Circle lines).

CROMWELL CRESCENT, KENSINGTON, SW5



An exquisitely presented two double bedroom apartment in the heart of Kensington



Terms

Price: £690.00 per week

Furnished/Unfurnished: Furnished

Local Authority/Council Tax: RBK&C Band F £2,179.64

Viewing To view call 020 7043 8431

Parking: Residents Parking

Fees: M2 Property do not charge tenant administration fees. We are members of The Property Ombudsman Redress Scheme for Residential Sales and Lettings (Membership No. D00776) and Client Money Protect (Membership No. CMP003231).

Energy Efficiency Rating		Current	Potential
Very energy efficient - lower running costs			
(92-100)	A		
(81-91)	B		
(69-80)	C	72	79
(55-68)	D		
(39-54)	E		
(21-38)	F		
(1-20)	G		
Not energy efficient - higher running costs			
England, Scotland & Wales		EU Directive 2002/91/EC	

The energy efficiency rating is a measure of the overall efficiency of a home. The higher the rating the more energy efficient the home is and the lower the fuel bills will be.

Approximate Gross Internal Area = 66 sq m / 710 sq ft

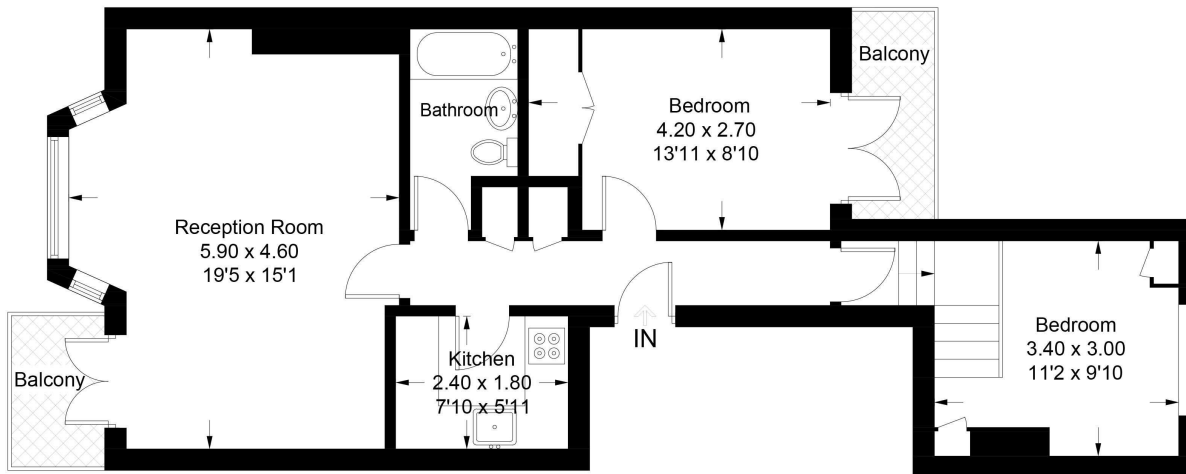
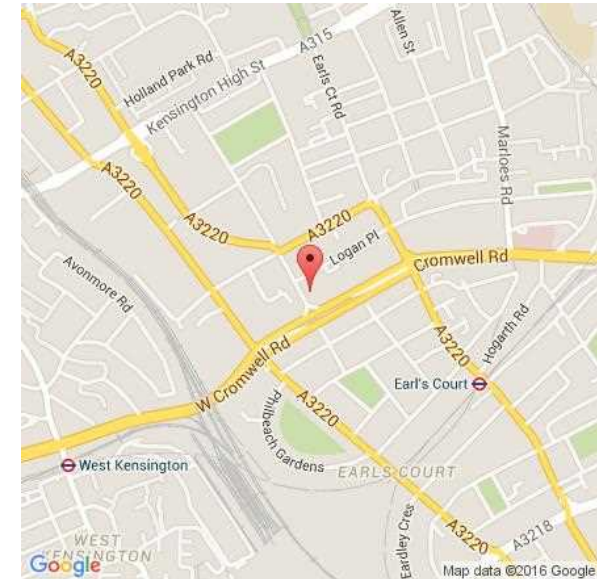


Illustration for identification purposes only, measurements are approximate, not to scale.
Copyright © M2 Property Limited



M2property

M2 Property | 6 Roland Gardens | South Kensington | London SW7 3PH | T 020 7043 8432 | E info@m2property.com | www.m2property.com

We have prepared these property particulars for the general guidance of intending purchasers or lessees. They are not designed to constitute a part of an offer or contract. For the purpose of the Property Misdescriptions Act 1991 and subsequent amendments we have taken all reasonable steps to ensure the accuracy of the details contained herein, however such statements are not to be relied on as a representation of fact and do not constitute any warranty or representation by M2 Property or the Vendors or Lessors. All photographs, measurements, floor plans and distances are given as a guide and should be checked before purchasing furniture, carpets, fixtures or fittings. Intending Purchasers or Lessees should satisfy themselves as to the accuracy of each of the statements contained in these particulars and should rely solely upon their own judgement, inspection and enquiries before entering into any contract. The floor plan if shown is intended as a guide to layout only and must not be relied on for any other purpose. It is not to scale. The copyright of all details, photographs and floor plans contained in these property particulars remain exclusive to M2 Property.