



Portelet Woodside Lane
Wistaston, Crewe



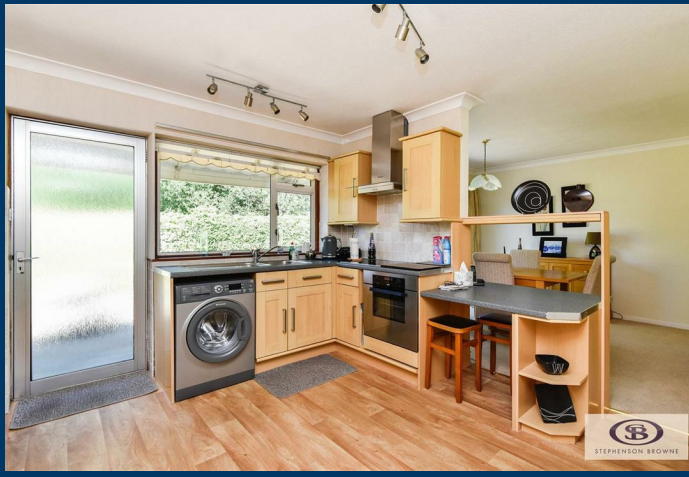
Portelet Woodside Lane, Wistaston, Crewe

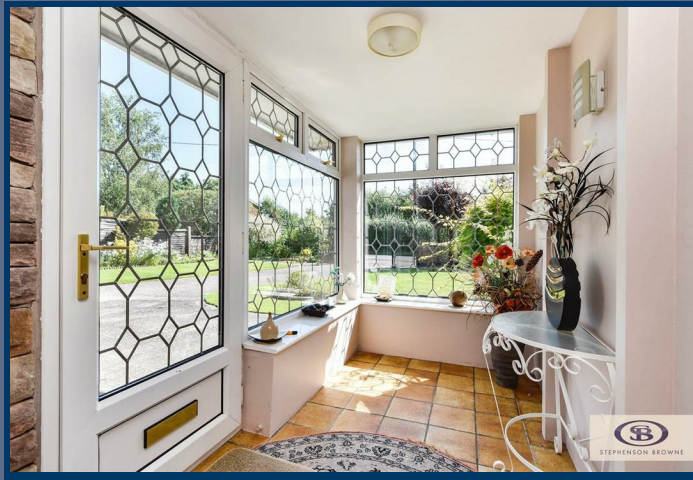
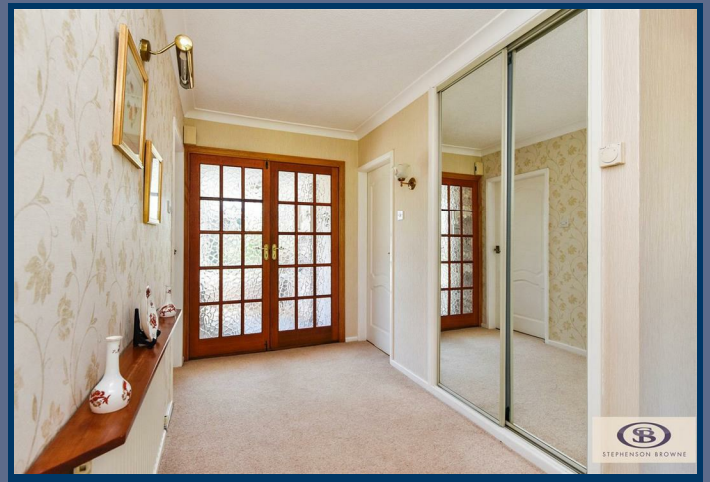
Impressed, delighted, excited are all the emotions you will feel upon visiting this charming detached bungalow which is nicely tucked within a no-through road, standing proud behind lovely landscaped gardens.

Woodside Lane with its picturesque surrounding provides a semi-rural setting whilst having all the local conveniences and amenities you would need on the doorstep, making this a very desirable area to live. What more could you ask for, take a viewing, offer and move in - it's as simple as that! However finding your forever home is not easy...well until now! Perhaps this home could make your dreams come true providing a place where memories can be made and treasured, a home to be loved and cherished.

This lovely property is sure to delight upon inspection and is offered for sale with no buying chain involved.

£350,000





Providing a very versatile home with two generous size reception rooms to include a fabulous size lounge and separate dining facility, each room providing ample space for entertaining guests or simply relaxing with your loved ones. The kitchen has a range of units, there is a family bathroom and the accommodation is completed by two double bedrooms, you'll have plenty of room to unwind and enjoy a peaceful night's sleep. Externally there are lovely enclosed gardens, a long driveway and garage with electric door.

The detached nature of this bungalow offers you privacy and tranquility, making it an ideal retreat from the hustle and bustle of everyday life, providing a peaceful and secure environment for you to call home. The surrounding area offers a blend of natural beauty and convenience, with local amenities and green spaces just a stone's throw away.

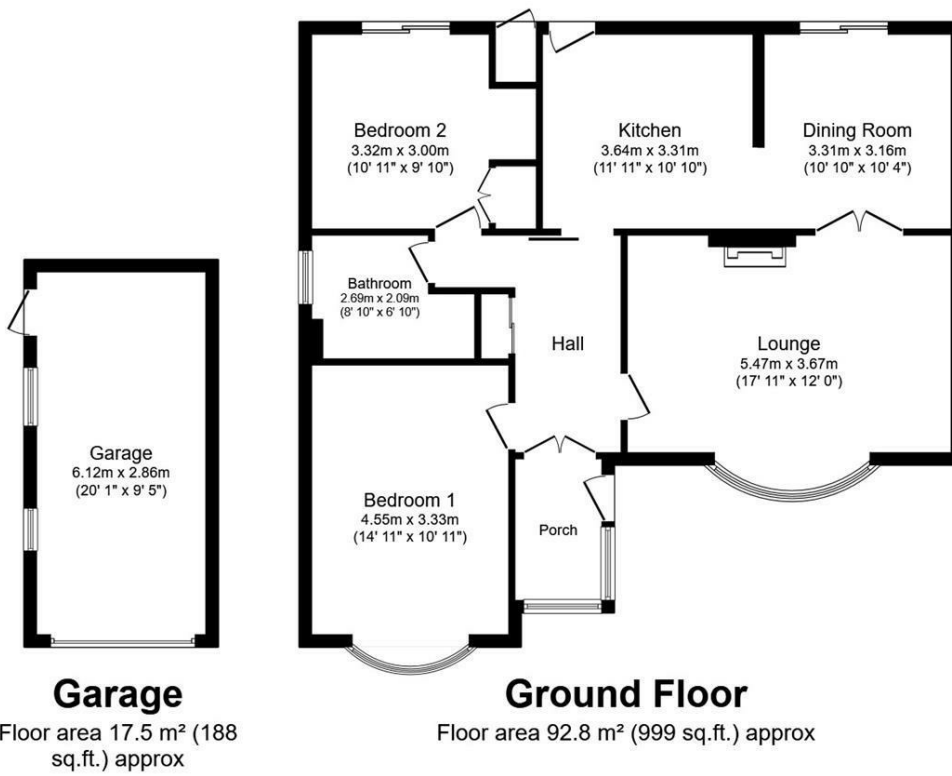
Whether you're looking to downsize or seeking a comfortable retreat, this detached bungalow on Woodside Lane is sure to capture your heart. Book a viewing today and envision the endless possibilities this property has to offer.



234 Nantwich Road, Crewe, Cheshire, CW2 6BP

Tel: 01270 252545

View all of our properties at
www.stephensonbrowne.co.uk



Total floor area 110.3 m² (1,187 sq.ft.) approx

This floor plan is for illustrative purposes only. It is not drawn to scale. Any measurements, floor areas (including any total floor area), openings and orientation are approximate. No details are guaranteed, they cannot be relied upon for any purpose and they do not form part of any agreement. No liability is taken for any error, omission or misstatement. A party must rely upon its own inspection(s). Powered by www.focalagent.com



234 Nantwich Road, Crewe, Cheshire, CW2 6BP

Tel: 01270 252545

View all of our properties at www.stephensonbrowne.co.uk