

Town & Country

Estate & Letting Agents



Dunfermline Tregarthen Lane, Pant, SY10 8LF

£1,000 Per Calendar Month

Hall

Radiator, door to front and side panel, wood flooring, steps to inner hall, wall lights, two storage cupboards, cloak room, window to front, tiled floor

Lounge 18'2" x 13'5" (5.55 x 4.09)



Bay window to front, window to side, radiator, log burner with brick surround, wall lights.

Dining Room 3.79 x 3.85

Radiator, wall lights, patio doors to front.

Kitchen 12'5" x 12'7" (3.79 x 3.85)



Boiler unit, Double oven, ceramic hob, extractor fan, 55'7 bowl sink and mixer tap, space for fridge freezer, radiator, window to front, tiled flooring.

Utility 14'2" x 7'7" (4.32 x 2.33)

Window to the rear, window to the side, tiled floor, radiator, base unit with sink, plumbing and space for appliances, airing cupboard off, oil boiler, door to the rear and door to garage.

Bedroom 1 13'5" x 12'2" (4.09 x 3.73)



window to the rear, radiator, built in wardrobe

Bedroom 2 11'9" x 10'0" (3.59 x 3.06)

window the the side, radiator, built in wardrobe

Bedroom 3 10'5" x 10'10" (3.19 x 3.31)



Window to the rear, radiator

Bathroom 10'0" x 17'8" (3.06 x 5.41)



roll top bath with central mixer tap, heated towel radiator, W/C, wash hand basin on a vanity unit with mixer tap, tiled floor, extractor fan, part tiled walls, spot lights, separate shower cubicle with mains shower, window to rear.

Garage



up and over electric door, window to side, Light

Garden

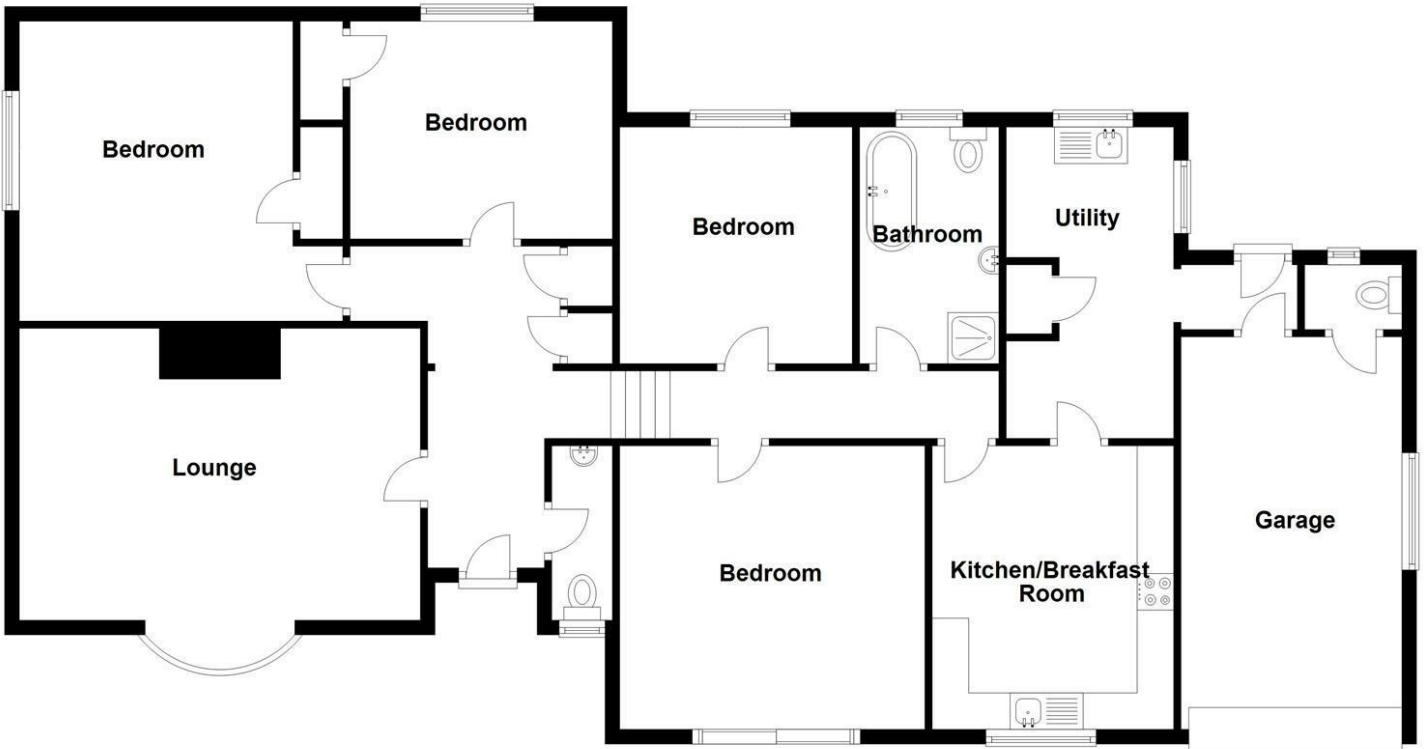


Lawned and block paved patio

Floor Plan

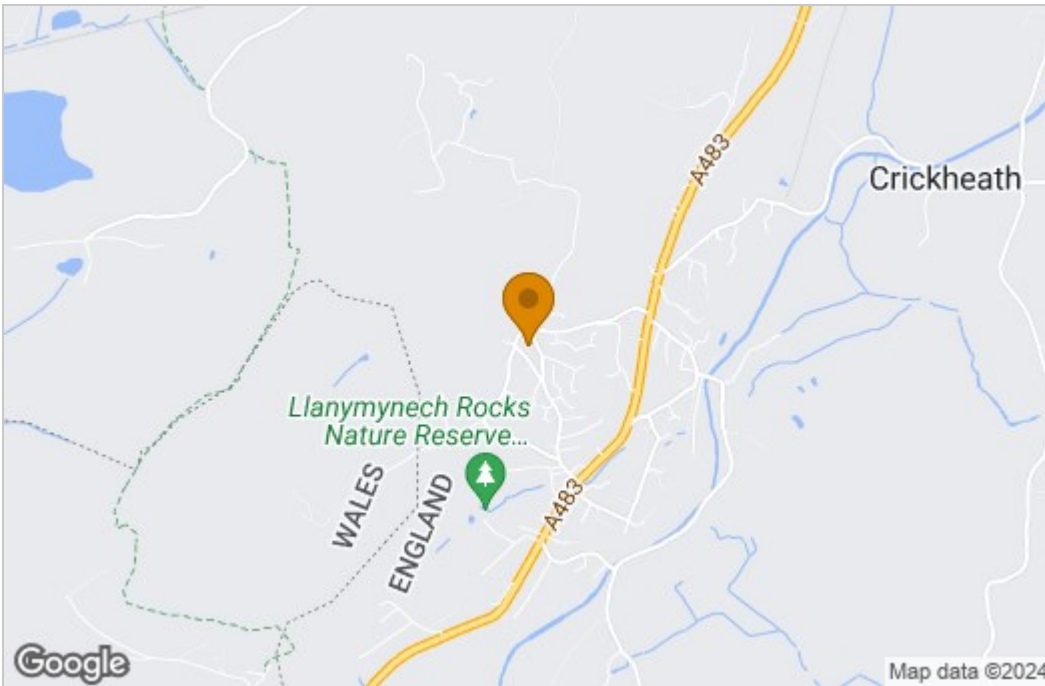
Ground Floor

Approx. 148.9 sq. metres (1602.5 sq. feet)

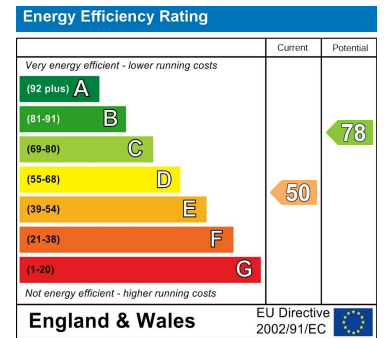


Total area: approx. 148.9 sq. metres (1602.5 sq. feet)

Area Map



Energy Efficiency Graph



These particulars, whilst believed to be accurate are set out as a general outline only for guidance and do not constitute any part of an offer or contract. Intending purchasers should not rely on them as statements of representation of fact, but must satisfy themselves by inspection or otherwise as to their accuracy. No person in this firm's employment has the authority to make or give any representation or warranty in respect of the property.

2-4 Willow Street, Oswestry, Shropshire, SY11 1AA

Tel: 01691 679631 Email: SALES@TOWNANDCOUNTRYOSWESTRY.COM www.townandcountryestateagents.co.uk