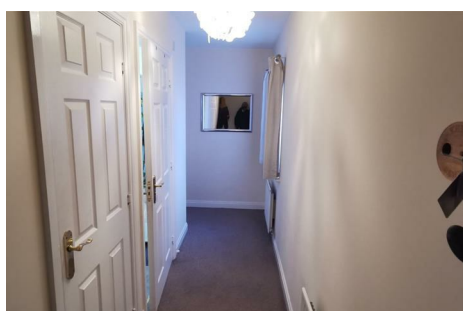




CHAFFERS

ESTATE AGENTS



TFF 23 Field Close

Dorset, DT10 1QN

Top Floor Flat
Allocated Parking
Two Bedrooms

Historic Rental Income

Open Plan Living/Dining/Kitchen

A fantastic opportunity to rent a modern Top-floor apartment. This well-designed property features two generously sized bedrooms, complemented by an open plan living space. Allocated parking.

£755 PCM

Council Tax Band: B

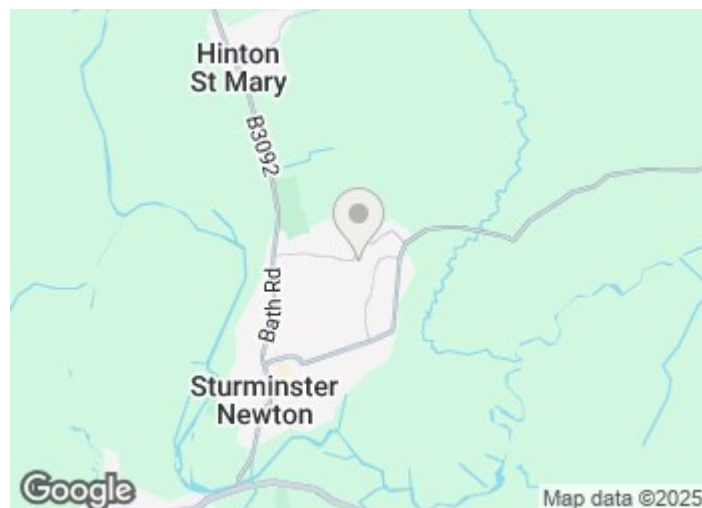
TFF 23 Field Close

Dorset, DT10 1QN

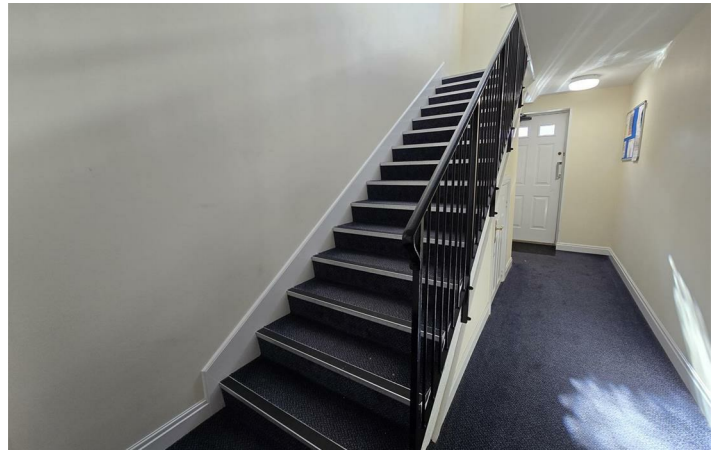


Description

A fantastic opportunity to rent a modern and spacious top-floor apartment located in the heart of Sturminster Newton. This well-designed home offers two generously sized bedrooms and an impressive open-plan living, dining, and kitchen area, creating a bright and versatile space ideal for contemporary living. Additional benefits include allocated parking.



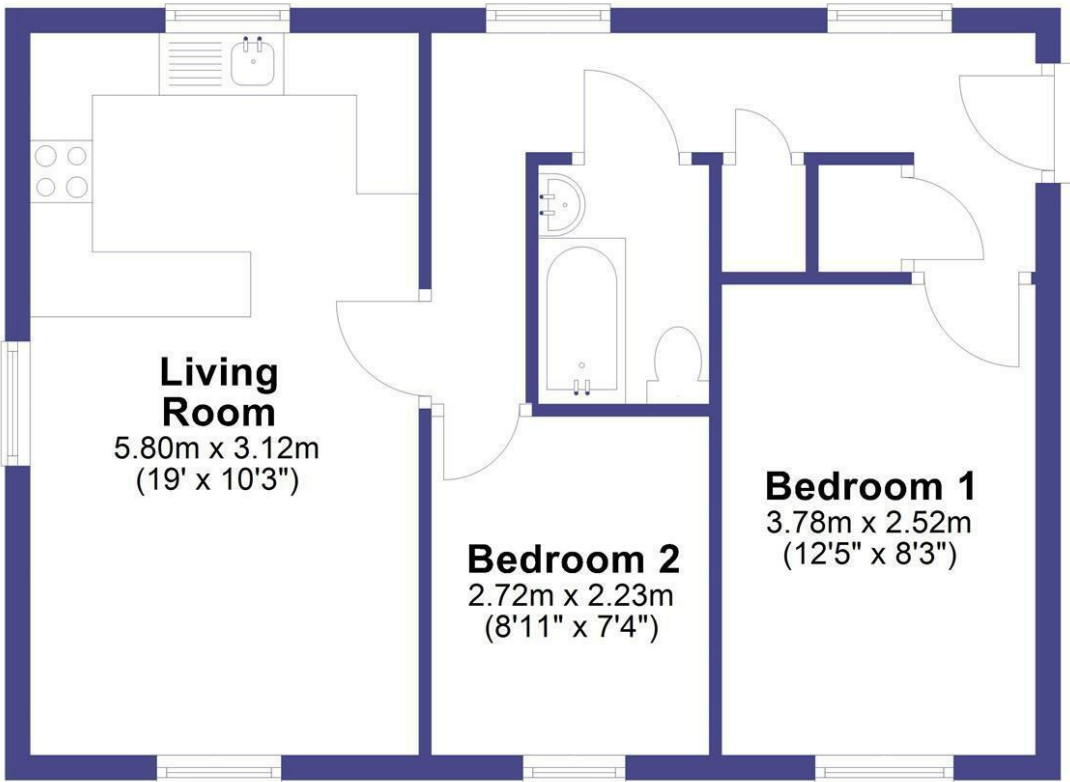
Directions





Floor Plan: Not to scale ~ For identification purposes only.

Top Floor



Total area: approx. 46.8 sq. metres (503.8 sq. feet)

These particulars, whilst believed to be accurate are set out as a general outline only for guidance and do not constitute any part of an offer or contract. Intending purchasers should not rely on them as statements of representation of fact, but must satisfy themselves by inspection or otherwise as to their accuracy. No person in this firms employment has the authority to make or give any representation or warranty in respect of the property.

