



CHAFFERS
ESTATE AGENTS



57 Anstee Road
Shaftesbury, SP7 8GT

AN "Alnwick" STYLE 2 DOUBLE BEDROOM MID TERRACE HOUSE SITUATED ON THE CHILMARK GLADE ESTATE WITHIN WALKING DISTANCE OF SHAFTESBURY TOWN CENTRE.

£950 PCM

Council Tax Band: C

57 Anstee Road , Shaftesbury, SP7 8GT



- No Benefits

- No Smoking

DETAILS:

An "Alnwick" style mid terraced 2 bedroom house situated on a popular development towards the outskirts of the town. The accommodation is arranged over two floors comprises : entrance hall with cloakroom off, fitted kitchen/diner with built in oven, hob and cooker hood, with French doors to garden; living room. 20 minute drive. Upstairs there is a landing, 2 double Bedrooms and family Bathroom. The house benefits from double glazing and gas radiator central heating.

Shaftesbury has a good range of facilities including supermarkets, banks, schools and shops including High Street names such as Boots, Superdrug, Costa

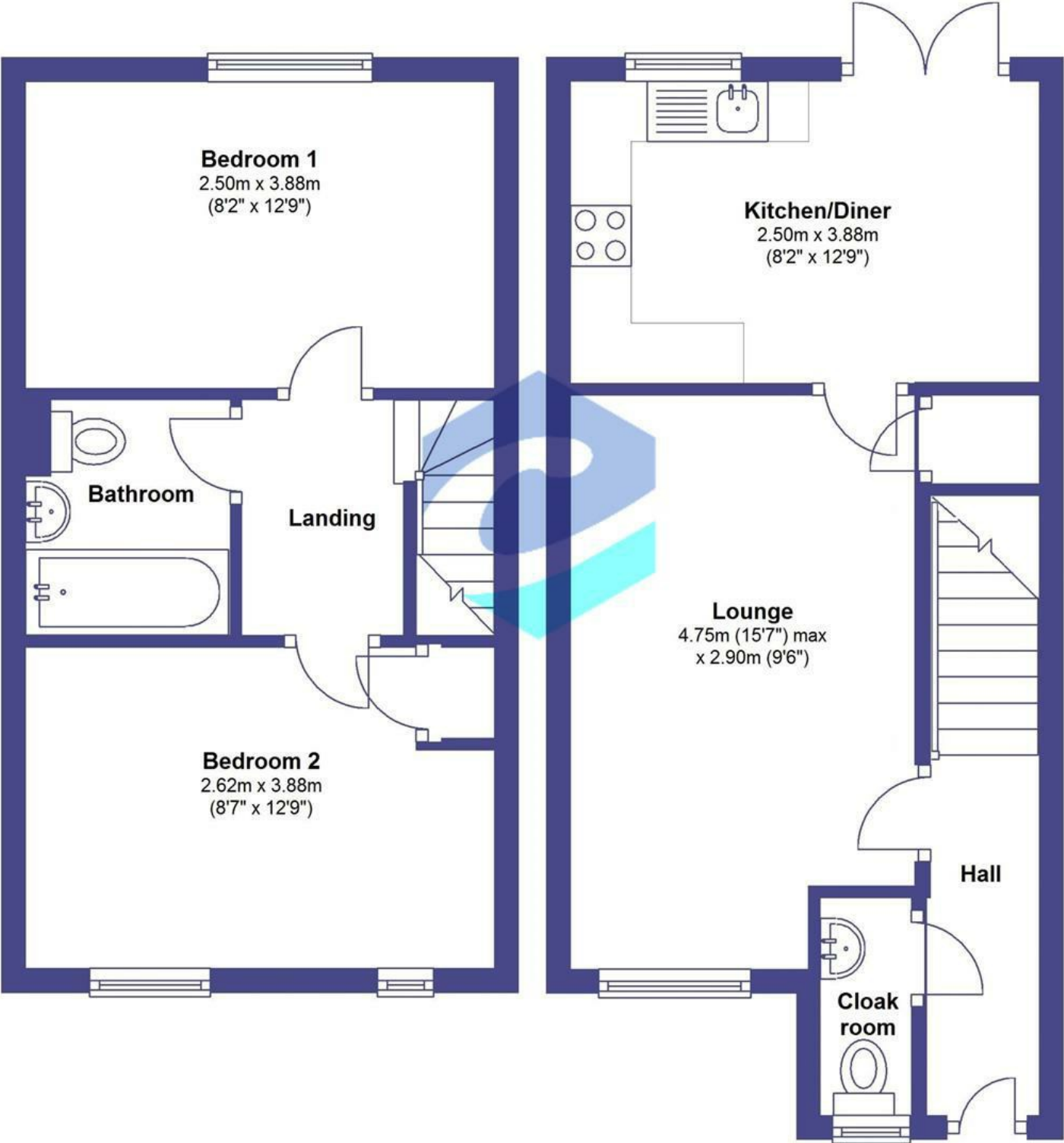
and W H Smiths. There are local bus services, long distance coach services and at Gillingham, about 5 miles away, a main line railway station on the London Waterloo to Exeter line. The Dorset coast is approximately 1 hours drive and the main A303 giving access to London and the West Country is an approximate 20 minute drive.



Directions



Floor Plan



These particulars, whilst believed to be accurate are set out as a general outline only for guidance and do not constitute any part of an offer or contract. Intending purchasers should not rely on them as statements of representation of fact, but must satisfy themselves by inspection or otherwise as to their accuracy. No person in this firms employment has the authority to make or give any representation or warranty in respect of the property.

Energy Efficiency Rating		
	Current	Potential
Very energy efficient - lower running costs		
(92 plus) A		96
(81-91) B	82	
(69-80) C		
(55-68) D		
(39-54) E		
(21-38) F		
(1-20) G		
Not energy efficient - higher running costs		
England & Wales		EU Directive 2002/91/EC