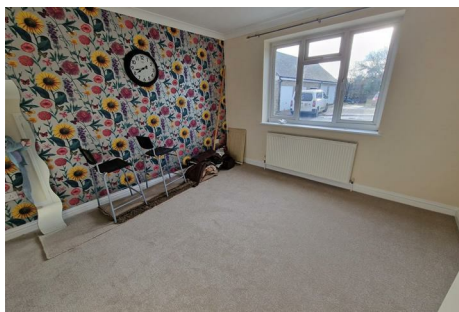




CHAFFERS
ESTATE AGENTS



Bruton Road

Charlton Musgrove, Wincanton, BA9 8HA

A substantial Four Bedroom property close to the town of Wincanton.

£1,300 PCM

Council Tax Band: E

Bruton Road

Charlton Musgrove, Wincanton, BA9 8HA



DESCRIPTION

A substantial 4 Bedroom House including a downstairs suite and wet room which could be used as an annex. Further accommodation includes large living room, dining room, kitchen, utility room, main bedroom with ensuite wet room, 2 further bedrooms and a family bathroom. Benefits include access to a garage, front and rear gardens, double glazing and oil fired central heating. EPC Rating: E Council Tax Band: E

SITUATION

The popular small town of Wincanton has a historic centre and benefits from a number of amenities and excellent transport links. Within the town there are a number of independent shops in the

centre as well as two supermarkets on the edge of town. There is a leisure centre and a gym within the town as well as the popular Holbrook House Hotel and Spa on the outskirts. There is an active community within Wincanton with a number of societies and several churches. Other small towns such as Bruton and Castle Cary are also nearby as well as the beautiful Stourhead Estate.

Other larger towns within commuting distance from the property include the regional centre of Yeovil as well as the Cathedral City of Salisbury and the historic town of Sherborne with its famous Abbey and Castles. There are

excellent Schools in the area with a primary school in Wincanton and the local state secondary school King Arthurs. There are also a number of independent schools nearby including the Bruton Schools and the schools at Sherborne.

There are excellent communication links with the A303 within five minutes drive providing good road access to London and the South West. There are also excellent rail links with stations at Gillingham, Castle Cary and Bruton. Bristol and Bournemouth Airports are also within a comfortable driving distance.



Directions





Floor Plan

These particulars, whilst believed to be accurate are set out as a general outline only for guidance and do not constitute any part of an offer or contract. Intending purchasers should not rely on them as statements of representation of fact, but must satisfy themselves by inspection or otherwise as to their accuracy. No person in this firm's employment has the authority to make or give any representation or warranty in respect of the property.

48 High Street, Shaftesbury, Dorset, SP7 8AA
Tel: 01747 852301 Email: shaftesbury@chaffersstateagents.co.uk www.chaffersstateagents.co.uk

