



Blenkin
& Co



PATRICK BROMPTON HALL • PATRICK BROMPTON • BEDALE



55 Baker Street, London
W1U 8AN
jamie.robson@knightfrank.com
020 7861 1549
knightfrank.co.uk



Priestley House, 36 Bootham
York, YO30 7BL
sales@blenkinandco.com
01904 671672
blenkinandco.com



PATRICK BROMPTON HALL

Patrick Brompton, Bedale, North Yorkshire DL8 1JL

Bedale 4 miles • A1(M) 5 miles • Leyburn 8 miles • Northallerton 9 miles
Thirsk 13 miles • Teesside International Airport 24 miles
Harrogate 30 miles • York 41 miles • Leeds 49 miles • Newcastle 54 miles

Remarkable Queen Anne country house estate near Bedale in the foothills of the Yorkshire Dales

Entrance hall • staircase hall • 4 reception rooms • kitchen
breakfast room • larder • pantry • utility room • cloakroom/
laundry room with separate wc • cellar • pool room with separate
wc • swimming pool

7 bedrooms and 3 bathrooms on the first floor • 3 bedrooms and
2 bathrooms on the second floor • attic room

Barn garaging • pavilion • 4 cottage apartments • 4 stables • stores
outbuildings

Formal gardens • parkland and well wooded grounds
In all just under 7 acres

An additional 57 acres is available by separate negotiation
(as indicated by the grey hatched areas on the boundary map)

For Sale Freehold

Blenkin
& Co



Patrick Brompton Hall dates from the early seventeenth century and stands in just under seven acres of well-established garden and grounds on the edge of a North Yorkshire village. It is a particularly appealing country house, grand and gracious but built on a relatively modest scale. Its principal reception rooms and bedrooms face south across sweeping lawns and parkland providing a timeless, pastoral view that is one of the chief delights of this historic property's setting. Alongside is a detached Georgian stable block that has in recent years been part converted into four stylish cottage apartments to accompany the four stables. Patrick Brompton Hall has been in the hands of the Ropner family since 1958 and was formerly the home of jockey Billy Nevett who won the Derby in 1945.



- Queen Anne country house, Grade II* listed
- Substantial house totalling over 11,000 sq ft
- Versatile accommodation arranged over three floors
- South facing orientation over a parkland setting
- Income from four holiday cottage apartments
- Renewable energy biomass system
- House, outbuildings, gardens and land totalling some 6.86 acres
- Further 57 acres of land with sporting and mineral rights available by separate negotiation (Lot 2)
- Convenient for Bedale, Thirsk, Northallerton and A1(M)

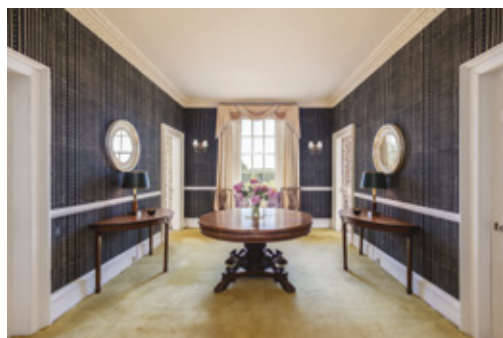
The main house dates circa 1703 with the east and west wings added some two hundred years later. For generations Patrick Brompton Hall – also known as Dalesend - has been a family home and has been sympathetically updated and maintained in the hands of the Ropner family including the conversion of the adjacent greenhouse into a charming pool. Two new bathrooms were fitted in 2022 and the stables converted into holiday apartments in 2014.



The Hall has many characterful, period features including a third century Roman tombstone acquired in 1958, ornate plasterwork, working shutters, wood panelling, original floorboards, a walnut staircase with shallow treads, cast iron radiators, timber sash windows, panelled doors and many fireplaces including one from Clumber Park, the ancestral home to the Dukes of Newcastle. The elegant, vaulted ceiling in the hall was added some 65 years ago by the incumbent's father.

There are four, beautifully proportioned reception rooms with south facing views and a full-height curved bay in the drawing room that opens to the lower terrace where stone steps rise to the upper pool terrace. The swimming pool with pool room is powered by green energy. A traditional kitchen breakfast room has a two-oven LPG Aga along with an adjacent larder, pantry and utility room giving access to the garaging.

On the first floor the two substantial bedroom suites enjoy the advantage of parkland views whilst the lion's share of the bedroom accommodation extends northwards and includes a nursery wing with sitting room. The loft room is a massive space of some 45 ft x 37 ft. It is fully boarded with a window, power and light and offers great scope to be developed into a games room or annexe.







Outside

The whole property is shielded by woodland and bands of trees with the village road skirting the boundary. Brompton Beck winds its way on the eastern edge, home to brown trout. The formal gardens sit in front of the house along with the sheltered sun terrace which enjoys an open aspect, and a ha-ha divides the lawns from the parkland. The parkland pastures have a scattered collection of well established, broadleaved trees such as oak, horse chestnut, sycamore and lime.

At the eastern end of the village the drive winds its way, crossing an arched stone bridge over the beck, passing a pond and arriving at the turning circle and parking area alongside the outbuildings. Here lies the main entrance to the house as well as the tradesmen's entrance giving easy access to the bio-mass boiler and store.

A further drive passes through the majestic wrought iron gates between fine stone pillars that separate the Hall from the stable block and sweeps in front of the house.

Cottages

There are four cottage apartments converted from the hayloft, tack room and grooms' accommodation all within the stable block that faces the meandering beck and bluebell woods. One is on the ground floor and three are on the first floor, accessed by an external staircase. They are all open plan loft-style apartments featuring the original old beams and iron trusses and are fitted to the highest specification with power showers, Italian marble tiles, underfloor heating and wood burning stoves. Four open cabins are accessed via a raised boardwalk through the bluebell woods.



Outbuildings

The 200-year old stable block has power, light, water. There are four enclosed stables all with windows and two secure stores. The coach house now houses the bio-mass boiler.

The pavilion was designed by eminent architect, Sir William Whitfield, in the 1980s and has hand painted murals. It is currently used as an office.

Environs

Patrick Brompton is a Conservation village in the Richmondshire district of North Yorkshire convenient for the popular market towns of Bedale and Leyburn, for Swaledale and Wensleydale as well as for the motorway network. First mentioned in the Domesday Book, the village has The Green Tree country pub, historic St Patrick's Church and the meandering Brompton Beck that runs through the village. The nearest mainline railway station is nine miles away in Northallerton; there is also a station in Thirsk and the nearest international airport is Leeds Bradford, about an hour's drive away. Harrogate lies some 30 miles away and the northern cities of Leeds, Newcastle and York are all easily accessible.



Tenure: Freehold

EPC Rating: Exempt as Grade II* Listed

Services & Systems: Services include mains electricity, water and drainage. There is a biodigester for the cottages – situated alongside the main drive. House on mains sewage. Biomass boiler heats the house, all the cottages and the swimming pool.

Fixtures & Fittings: Only those mentioned in these sales particulars are included in the sale. All others, such as fitted carpets, curtains, light fittings, garden ornaments etc., are specifically excluded but may be made available by separate negotiation.

Viewing: Strictly by appointment

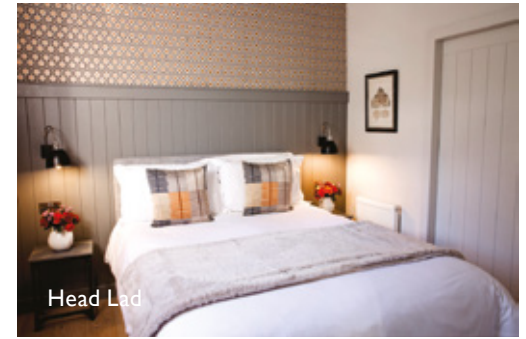
Local Authority: North Yorkshire Council www.northyorks.gov.uk. Conservation area.



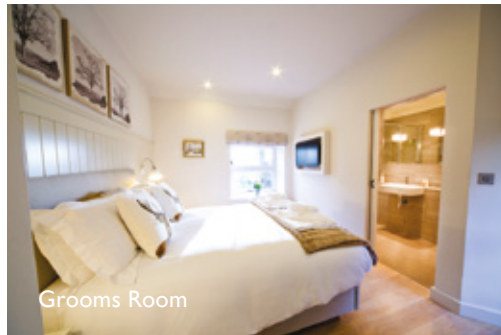
Hayloft



Hayloft



Head Lad



Grooms Room



Tack Room



Important notice 1. No description or information given about the property or its value, whether written or verbal or whether or not in these Particulars ("Information") may be relied upon as a statement or representation of fact. Neither Blenkin & Co nor its Joint Agents have any authority to make any representation and accordingly any Information given is entirely without responsibility on the part of Blenkin & Co or the seller/lessor. 2. Any photographs (and artists' impressions) show only certain parts of the property at the time they were taken. Any areas, measurements or distances given are approximate only. 3. Any reference to alterations to, or use of any part of the property is not a statement that any necessary planning, building regulations or other consent has been obtained. These matters must be verified by any intending buyer/lessee. 4. Any buyer/lessee must satisfy himself by inspection or otherwise as to the correctness of any Information given. **NB:** Google map images may neither be current nor a true representation. **Photographs, particular and showreel:** Summer & Autumn 2023. Brochure by wordperfectprint.com

Patrick Brompton Hall, Patrick Brompton, Bedale, North Yorkshire DL8 1JL

Approximate Gross Internal Floor Area

Main House: 1,056.6 sq m / 11,372 sq ft, Stable Block & Cottages: 321.4 sq m / 3,460 sq ft, Pavillion & Greenhouse: 29.1 sq m / 313 sq ft, Total: 1,407.1 sq m / 15,154 sq ft

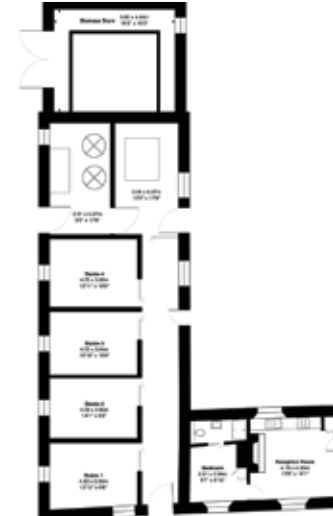
For identification only. Not to scale. All Measurements and fixtures including doors and windows are approximate and should be independently verified.



First Floor



Second Floor





City

Country

Coast