



**Wold Road, Hull, HU5**

**Asking Price £140,000**

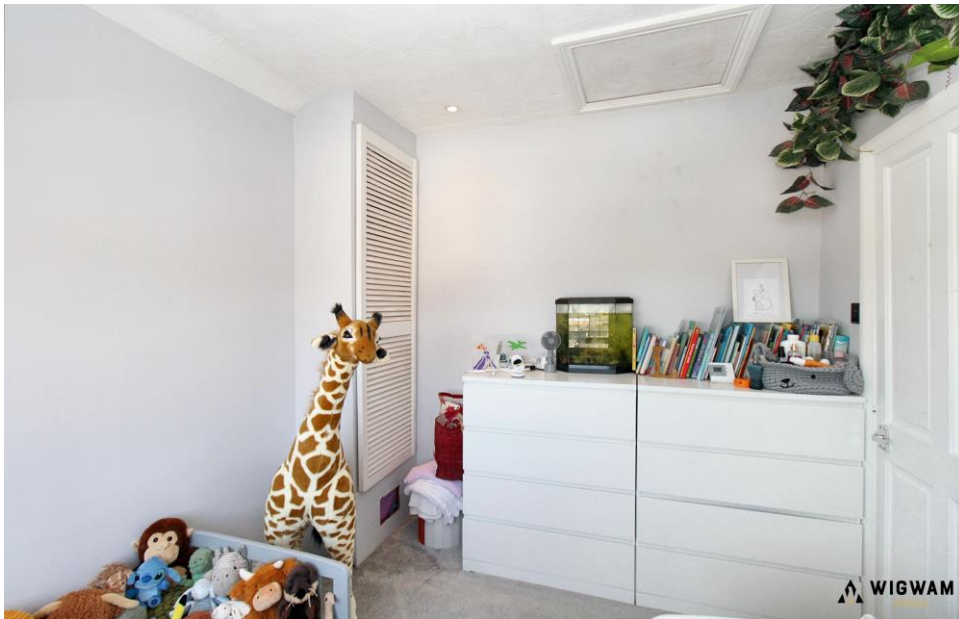












## Wold Road, Hull, HU5

Step inside this beautifully presented end-terraced home, now available for sale! The ground floor boasts a spacious open-plan layout, seamlessly connecting the lounge, dining area, and a modern kitchen complete with a stylish island. Upstairs, you'll find two generously sized double bedrooms and a contemporary bathroom. Outside, enjoy a private rear garden, a convenient garage, and a driveway at the front of the property.

Situated down Wold Road just off the popular Willerby Road, with easy access to local cafes, shops and supermarkets nearby, you won't need to travel far for daily needs. The property is in the catchment area for the well-regarded Wold Academy Primary and the well-regarded Wolverton Secondary School.

### KEY FEATURES

- END-TERRACED
- 2 BEDROOMS
- DRIVEWAY
- GARAGE
- FREEHOLD
- GREAT LOCATION

# DETAILS

## Entrance Hall

With carpet flooring, radiator, stairs leading to the first floor and door leading to the lounge/diner.

## Lounge/Diner

With laminate flooring, radiator, double glazed windows, 2 radiators, under stair storage and open arch leading to the kitchen.

## Kitchen

With laminate flooring, island, sink/drainage, double glazed window, space for appliances, laminate work surfaces, radiator, extractor fan and door leading to the rear garden.

## Bedroom 1

With carpet flooring, radiator and double glazed windows.

## Bedroom 2

With carpet flooring, radiator and double glazed window.

## Bathroom

With tiled flooring, WC, walk-in shower, double glazed window, towel radiator and wash hand vanity basin.

## Outside

Outside, enjoy a private rear garden, a convenient garage, and a driveway at the front of the property.

## Viewings

Strictly by appointment with selling agents. Please contact Wigwam Homes today to book your viewing.

## Fixtures & Fittings

Various fixtures and fittings may be available by separate negotiation and need to be confirmed prior to processing a formal offer.

## Free Market Appraisals / Property Valuations

We at Wigwam Homes are delighted to offer any homeowner a FREE no obligation valuation on your property. Call today to book! Interested in selling? We offer zero tie-in periods and no-sale NO-fee! Call us now on

01482 50 51 52 to book a valuation.

## Free Mortgage Consultations

At Wigwam Homes we have our own independent mortgage advisors with access to over 90 lenders. With so many mortgage products on the market, an independent advisor can show you all the various options and help you discover which one is right for you. We can also help with any property, income and personal insurances which you may need to complete your mortgage application.

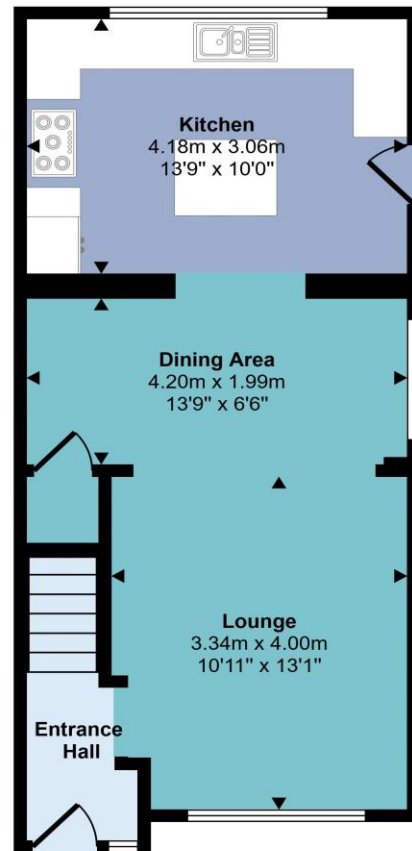
## About Us

At Wigwam Homes we take pride in the success we achieve for our clients. Whether it is selling your properties, finding your forever home, searching for a long-term rental investment or looking to profit from onward selling, the Wigwam team is here to guide you through the housing market.

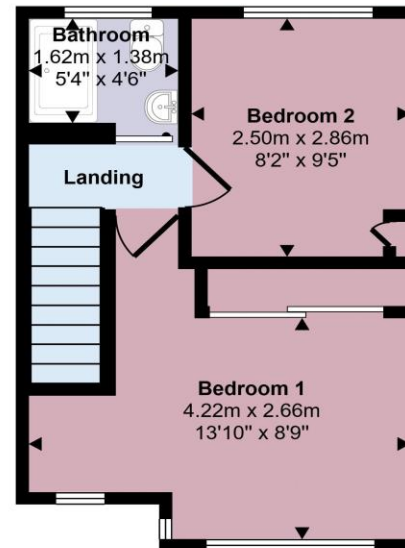
## Disclaimer

Here at Wigwam Homes we try to ensure that all information in the advertisements are correct. However, we do advise any potential buyers to conduct their own viewing. The Agent has not checked the legal documentation to verify legal status of the property or the validity of any guarantee. A buyer must assume the information is incorrect, until it has been verified by their own solicitors. The measurements supplied are for general guidance, and as such must be considered as incorrect. A buyer is advised to re-check the measurements themselves before committing. Nothing concerning the type of construction or the condition of the structure is to be implied from the photograph of the property. These details are prepared as a general guide only, and should not be relied upon as a basis to enter into a legal contract, or to commit expenditure. An interested party should consult their own surveyor, solicitor or other professionals before committing themselves to any expenditure.

Approx Gross Internal Area  
65 sq m / 705 sq ft



Ground Floor  
Approx 40 sq m / 430 sq ft



First Floor  
Approx 26 sq m / 275 sq ft

This floorplan is only for illustrative purposes and is not to scale. Measurements of rooms, doors, windows, and any items are approximate and no responsibility is taken for any error, omission or mis-statement. Icons of items such as bathroom suites are representations only and may not look like the real items. Made with Made Snappy 360.