



**Aspen Close, Hull, HU4**

**Asking Price £230,000**









# Aspen Close, Hull, HU4

This beautifully presented detached bungalow is a perfect blend of comfort and style. Inside, you'll find a lounge, conservatory, kitchen/diner, 2 bedrooms and bathroom. Outside, the property boasts a lovely rear garden. To the front aspect, you'll find convenient parking along with a single garage, offering additional storage and practicality. This charming bungalow is an excellent opportunity for those seeking a tranquil and low-maintenance lifestyle.

Situated down the peaceful cul-de-sac Aspen Close. Within close proximity to the desirable village of Hessle. Hessle offers numerous amenities including restaurants, cafes, retailers and super markets. The well-regarded Tilbury Primary School is within the catchment area. Pickering Park is also a short walk away. Transport links are also accessible to the Hull City Centre & the surrounding villages.

## KEY FEATURES

- **Bungalow**
- **2 Bedrooms**
- **2 Reception Room**
- **Garage**
- **Parking**

# DETAILS

## Entrance Hall

With laminate flooring, radiator, doors leading to the kitchen, lounge, bedroom 1, bedroom2 and bathroom.

## Kitchen/Diner

With laminate flooring, laminate work surfaces, hob, extractor fan, double oven, breakfast bar, sink/drain, double glazed window, fridge/freezer and central heating boiler.

## Lounge

With laminate flooring, gas fire, radiator and double glazed window.

## Bedroom 1

With fitted wardrobes, laminate flooring, radiator and double glazed window.

## Bedroom 2

With laminate flooring, radiator, fitted wardrobes and doors leading to the conservatory.

## Conservatory

With tiled flooring, radiator and patio doors leading to the rear garden.

## Outside

With a low maintenance rear garden, parking and single garage to the front aspect.

## Viewings

Strictly by appointment with selling agents. Please contact Wigwam Homes today to book your viewing.

## Fixtures & Fittings

Various fixtures and fittings may be available by separate negotiation and need to be confirmed prior to processing a formal offer.

## Free Market Appraisals / Property Valuations

We at Wigwam Homes are delighted to offer any homeowner a FREE no obligation valuation on your property. Call today to book! Interested in

selling? We offer zero tie-in periods and no-sale NO-fee! Call us now on 01482 50 51 52 to book a valuation.

## Free Mortgage Consultations

At Wigwam Homes we have our own independent mortgage advisors with access to over 90 lenders. With so many mortgage products on the market, an independent advisor can show you all the various options and help you discover which one is right for you. We can also help with any property, income and personal insurances which you may need to complete your mortgage application.

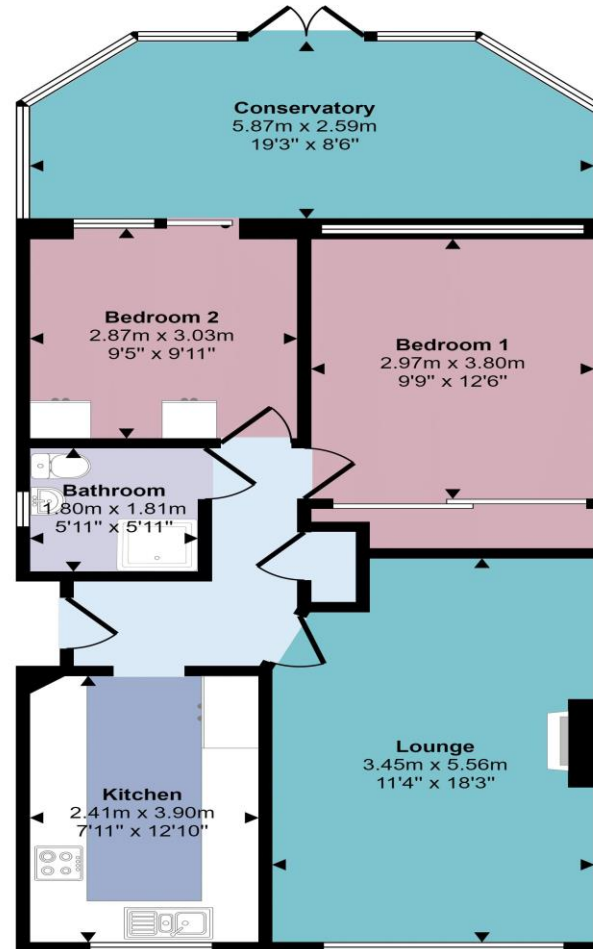
## About Us

At Wigwam Homes we take pride in the success we achieve for our clients. Whether it is selling your properties, finding your forever home, searching for a long-term rental investment or looking to profit from onward selling, the Wigwam team is here to guide you through the housing market.

## Disclaimer

Here at Wigwam Homes we try to ensure that all information in the advertisements are correct. However, we do advise any potential buyers to conduct their own viewing. The Agent has not checked the legal documentation to verify legal status of the property or the validity of any guarantee. A buyer must assume the information is incorrect, until it has been verified by their own solicitors. The measurements supplied are for general guidance, and as such must be considered as incorrect. A buyer is advised to re-check the measurements themselves before committing. Nothing concerning the type of construction or the condition of the structure is to be implied from the photograph of the property. These details are prepared as a general guide only, and should not be relied upon as a basis to enter into a legal contract, or to commit expenditure. An interested party should consult their own surveyor, solicitor or other professionals before committing themselves to any expenditure.

Approx Gross Internal Area  
76 sq m / 821 sq ft



Floorplan

This floorplan is only for illustrative purposes and is not to scale. Measurements of rooms, doors, windows, and any items are approximate and no responsibility is taken for any error, omission or mis-statement. Icons of items such as bathroom suites are representations only and may not look like the real items. Made with Made Snappy 360.