



Grange Drive, Cottingham, HU16

Asking Price £250,000











Grange Drive, Cottingham, HU16

This charming semi-detached property is nestled in a desirable village, offering a perfect blend of comfort and convenience. Upon entering, you're greeted by a welcoming entrance hall that sets the tone for the rest of the home. The downstairs WC adds practicality for guests and family alike. The spacious lounge provides a cosy retreat, ideal for relaxation and entertaining. The heart of the home is the extended kitchen, which now boasts a bright and airy living and dining space. This open-plan area is perfect for family gatherings and socializing, with ample room for a dining table and comfortable seating.

Upstairs, you'll find three well-proportioned bedrooms, each providing a peaceful sanctuary, along with a family bathroom that serves the needs of the household.

Outside, the low-maintenance rear garden is designed for ease, allowing you to enjoy your outdoor space without the hassle of extensive upkeep. Additionally, the property includes a garage, providing valuable storage.

Situated down Grange Drive, located in the desirable village of Cottingham which offers a picturesque setting with a quaint village centre, lovely green spaces, and a friendly community vibe. You can find a variety of local shops, cosy cafes, and traditional pubs to enjoy. The village also has a rich history, with historic buildings and landmarks to explore. It's a great place to experience a peaceful and relaxing atmosphere while still being close to the city. Also benefiting from great transport links to the Hull City Centre, Beverley and surrounding villages.

KEY FEATURES

- Semi-Detached
- Desirable Location
- 3 Bedrooms
- Open Plan Kitchen/Diner
- Garage

DETAILS

Entrance Hall

With laminate flooring, radiator, stairs leading to the first floor, doors leading to the downstairs WC, lounge and kitchen.

Downstairs WC

With laminate flooring, double glazed window, WC and wash hand basin.

Lounge

With carpet flooring, radiator, double glazed window and feature fireplace.

Kitchen/Diner

With laminate flooring, laminate work surfaces, radiators, sink/drainage, double oven, extractor fan, hob, double glazed windows, spotlights, space for appliances and patio doors leading to the rear aspect.

Bedroom 1

With carpet flooring, radiator and double glazed window.

Bedroom 2

With laminate flooring, double glazed window and radiator.

Bedroom 3

With laminate flooring, double glazed window and radiator.

Outside

Offering a convenient front garden and to the rear aspect a low maintenance garden and single garage.

Viewings

Strictly by appointment with selling agents. Please contact Wigwam Homes today to book your viewing.

Fixtures & Fittings

Various fixtures and fittings may be available by separate negotiation and need to be confirmed prior to processing a formal offer.

Free Market Appraisals / Property Valuations

We at Wigwam Homes are delighted to offer any homeowner a FREE no obligation valuation on your property. Call today to book! Interested in

selling? We offer zero tie-in periods and no-sale NO-fee! Call us now on 01482 50 51 52 to book a valuation.

Free Mortgage Consultations

At Wigwam Homes we have our own independent mortgage advisors with access to over 90 lenders. With so many mortgage products on the market, an independent advisor can show you all the various options and help you discover which one is right for you. We can also help with any property, income and personal insurances which you may need to complete your mortgage application.

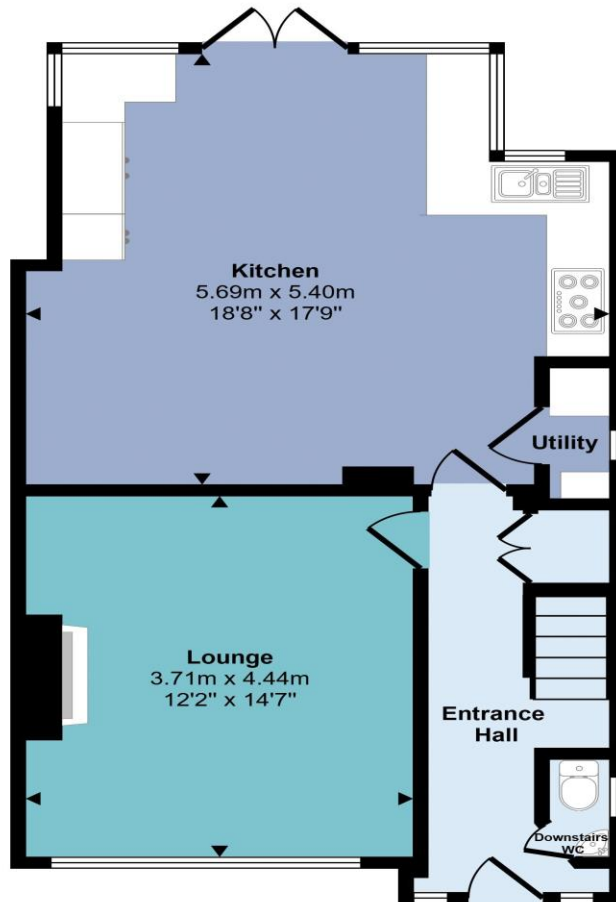
About Us

At Wigwam Homes we take pride in the success we achieve for our clients. Whether it is selling your properties, finding your forever home, searching for a long-term rental investment or looking to profit from onward selling, the Wigwam team is here to guide you through the housing market.

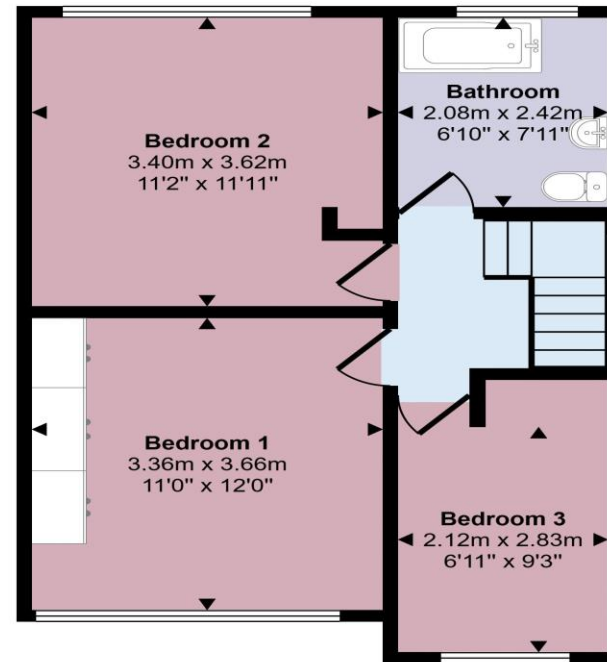
Disclaimer

Here at Wigwam Homes we try to ensure that all information in the advertisements are correct. However, we do advise any potential buyers to conduct their own viewing. The Agent has not checked the legal documentation to verify legal status of the property or the validity of any guarantee. A buyer must assume the information is incorrect, until it has been verified by their own solicitors. The measurements supplied are for general guidance, and as such must be considered as incorrect. A buyer is advised to re-check the measurements themselves before committing. Nothing concerning the type of construction or the condition of the structure is to be implied from the photograph of the property. These details are prepared as a general guide only, and should not be relied upon as a basis to enter into a legal contract, or to commit expenditure. An interested party should consult their own surveyor, solicitor or other professionals before committing themselves to any expenditure.

Approx Gross Internal Area
99 sq m / 1063 sq ft



Ground Floor
Approx 56 sq m / 599 sq ft



First Floor
Approx 43 sq m / 464 sq ft

This floorplan is only for illustrative purposes and is not to scale. Measurements of rooms, doors, windows, and any items are approximate and no responsibility is taken for any error, omission or mis-statement. Icons of items such as bathroom suites are representations only and may not look like the real items. Made with Made Snappy 360.