



Standage Road, Thorngumbald, HU12

Offers Over £150,000









Standage Road, Thorngumbald, HU12

This generous mid terrace property offers spacious living with modern amenities, making it an ideal family home. Located in the desirable residential area of Thorngumbald, this property provides easy access to the market town of Hedon and all its conveniences.

Don't miss the chance to view this fantastic property that combines generous living spaces with a sought-after location. Perfect for families looking for a spacious and comfortable home.

Reservation Fee Applicable T&C's Apply Desirable Location: Situated in Thorngumbald, a popular village close to the market town of Hedon. Garage with Rear Access: Additional storage or parking options. Deceptively Large Living Accommodation: Surprisingly spacious interiors. Family Bathroom: Well-appointed and conveniently located on the first floor. Three Well-Proportioned Bedrooms: Generous space for family members or guests. Modern Fitted Kitchen: Equipped with contemporary amenities. Through Lounge Dining Room: Spacious, open-plan area ideal for family life and entertaining. Off-Street Parking: Convenient parking right outside your home.

Score	Energy rating	Current	Potential
92+	A		
81-91	B		83 B
69-80	C		
55-68	D	65 D	
39-54	E		
21-38	F		
1-20	G		

KEY FEATURES

- Mid-Terraced
- 3 Bedrooms
- Low Maintenance Rear Garden
- Driveway & Garage
- Fitted Wardrobes

DETAILS

Entrance Hall

With laminate flooring, radiator, double glazed window, door leading to under stair cupboard with lighting, door leading to kitchen, door leading to lounge/diner and stairs leading to first floor.

Lounge/Diner

With laminate flooring, radiator, feature fireplace, double glazed window and patio doors leading to rear garden.

Kitchen

With tiled flooring, radiator, cabinets, laminate work surfaces, fan extractor, integrated hob, integrated oven, integrated washer/dryer, integrated dishwasher, integrated fridge, sink/drainage, double glazed window and door leading to rear garden.

Bedroom 1

With carpet flooring, radiator, double glazed windows and fitted wardrobes.

Bedroom 2

With laminate flooring, radiator, built in wardrobe and double glazed windows.

Bedroom 3

With carpet flooring, double glazed windows and radiator.

Bathroom

With tiled flooring, towel radiator, vanity hand wash basin, WC, double glazed windows, shower cubicle with shower

attachment.

Rear Garden

With decking, patio flooring, gravel, fence boundary, door leading to kitchen and patio doors leading to lounge/diner.

Parking

Offers driveway to the front aspect and garage to the rear aspect.

Viewings

Strictly by appointment with selling agents. Please contact Wigwam Homes today to book your viewing.

Fixtures & Fittings

Various fixtures and fittings may be available by separate negotiation and need to be confirmed prior to processing a formal offer.

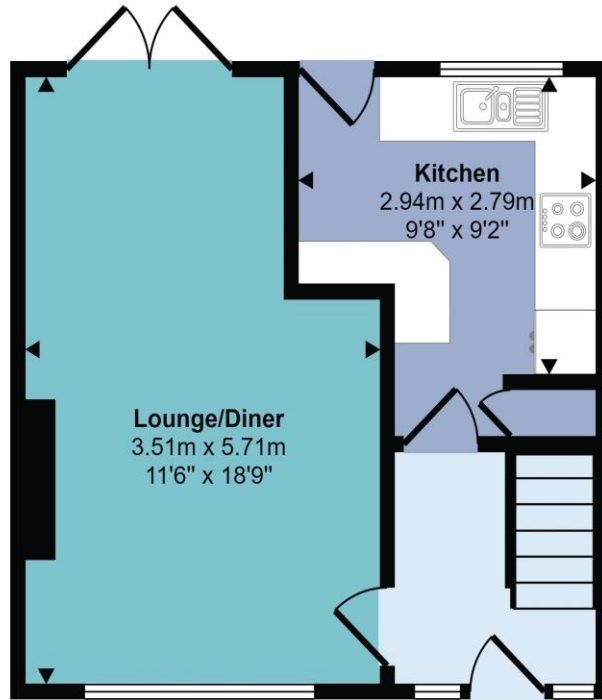
Free Market Appraisals / Property Valuations

We at Wigwam Homes are delighted to offer any homeowner a FREE no obligation valuation on your property. Call today to book! Interested in selling? We offer zero tie-in periods and no-sale NO-fee! Call us now on 01482 50 51 52 to book a valuation.

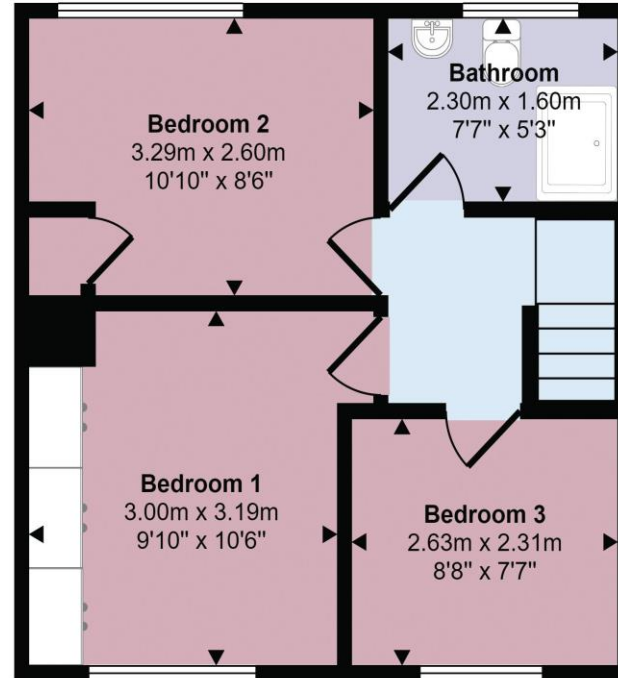
Free Mortgage Consultations

At Wigwam Homes we have our own independent mortgage advisors with access to over 90 lenders. With so many mortgage products on the market, an independent advisor can show you all the various options and help you discover which one is right for you. We can also help with any property, income and personal insurances which you may need to complete your mortgage application.

Approx Gross Internal Area
67 sq m / 721 sq ft



Ground Floor
Approx 32 sq m / 349 sq ft



First Floor
Approx 35 sq m / 373 sq ft

This floorplan is only for illustrative purposes and is not to scale. Measurements of rooms, doors, windows, and any items are approximate and no responsibility is taken for any error, omission or mis-statement. Icons of items such as bathroom suites are representations only and may not look like the real items. Made with Made Snappy 360.