

613 Anlaby Road, Hull, HU3 6SU

01482 50 51 52

hulloffice@wigwamhomes.co.uk

wigwamhomes.co.uk



**WIGWAM**  
HOMES



## Hampshire Street, Hull, HU4 6PZ



**Guide Price £70,000 - £75,000**



THIS MID-TERRACE IS PERFECT FOR FIRST TIME BUYERS OR INVESTORS! Well-presented throughout and briefly offers front porch, lounge, reception room, kitchen, rear porch and bathroom to the ground floor and also offers 2 bedrooms to the first floor. Rear garden.

This property is situated off Hessle Road close to local shops, amenities and well-regarded schools such as Sirius West Academy and Christopher Pickering Primary School There are excellent bus routes to and from the Hull City Centre and surrounding areas such as Hessle and Anlaby.

### Property HIGHLIGHTS

Mid-Terraced

2 Bedrooms

Freehold

Close To Amenities

Open/Plan Living

613 Anlaby Road, Hull, HU3 6SU

01482 50 51 52

hulloffice@wigwamhomes.co.uk

f i n wigwamhomes.co.uk



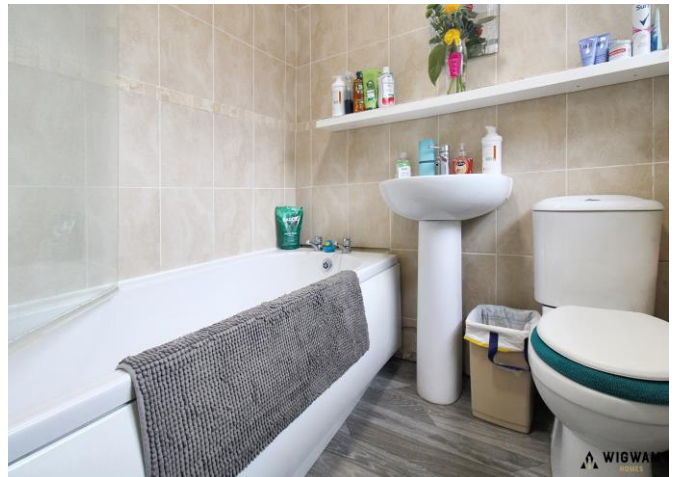


613 Anlaby Road, Hull, HU3 6SU

01482 50 51 52

hulloffice@wigwamhomes.co.uk

f i l w w i g w a m h o m e s . c o . u k



613 Anlaby Road, Hull, HU3 6SU

01482 50 51 52

hulloffice@wigwamhomes.co.uk

wigwamhomes.co.uk



**WIGWAM**  
HOMES



## Property DETAILS

### **Front Porch,**

With carpet flooring, door leading to front aspect and door leading to lounge.

### **Lounge,**

With carpet flooring, double glazed window, radiator, feature fireplace and open arch leading to reception room.

### **Reception Room,**

With carpet flooring, radiator, open arch leading to lounge, stairs leading to first floor and door leading to kitchen.

### **Kitchen,**

With laminate flooring, radiator, laminate worksurfaces, cabinets, double glazed window, door leading to reception room, space for appliances, sink/drainage and door leading to rear porch.

### **Rear Porch,**

With laminate flooring, door leading to kitchen, door leading to bathroom and door leading to rear garden.

### **Bedroom 1,**

With carpet flooring, radiator and double glazed windows.

### **Bedroom 2,**

With carpet flooring, radiator and double glazed windows.

### **Bathroom,**

With laminate flooring, double glazed window, radiator, WC, pedestal hand washbasin, bath tub with shower attachment and door leading to rear porch.

### **Rear Garden,**

With concrete flooring, shed, fence boundary and door leading to rear porch.

### **Viewings,**

Strictly by appointment with selling agents. Please contact Wigwam Homes today to book your viewing.

### **Fixtures & Fittings ,**

Various fixtures and fittings may be available by separate negotiation and need to be confirmed prior to processing a formal offer.

### **Free Market Appraisals / Property Valuations,**

We at Wigwam Homes are delighted to offer any homeowner a FREE no obligation valuation on your property. Call today to book! Interested in selling? We offer zero tie-in periods and no-sale NO-fee! Call us now on 01482 50 51 52 to book a valuation.

### **Free Mortgage Consultations,**

At Wigwam Homes we have our own independent mortgage advisors with access to over 90 lenders. With so many mortgage products on the market, an independent advisor can show you all the various options and help you discover which one is right for you. We can also help with any property, income and personal insurances which you may need to complete your mortgage application.

### **About Us,**

At Wigwam Homes we take pride in the success we achieve for our clients. Whether it is selling your properties, finding your forever home, searching for a long-term rental investment or looking to profit from onward selling, the Wigwam team is here to guide you through the housing market.



Registered Address: 613 Anlaby Road, Hull, HU3 6SU

Company number: 08768041

Properties for Sale by Region | Properties to Let by Region | Privacy Policy