

613 Anlaby Road, Hull, HU3 6SU

01482 50 51 52

hulloffice@wigwamhomes.co.uk

wigwamhomes.co.uk



**WIGWAM**  
HOMES



## Dundee Street, Hull, HU5 3TX



**Offers Over £175,000**



This property is up to show home standards and is ready to move in to! Semi-detached and simply stunning throughout! Perfect for first time buyers and growing families! Briefly offering entrance hall, lounge/diner, kitchen/diner and downstairs WC to the ground floor. 3 bedrooms and bathroom to the first floor. Rear garden and summerhouse. Driveway to the front aspect.

Situated in the popular HU5 postcode down Dundee street. Close to the avenues which offer a variety of places to explore! Multiple eateries and bars are accessible! The well-regarded schools such as Newland School and Kelvin Hall School are also in the catchment area! Fantastic transport links are also nearby to the Hull City Centre and the surrounding villages.

### Property HIGHLIGHTS

Semi-Detached

3 Bedrooms

Driveway

Beautifully Presented

Downstairs WC

613 Anlaby Road, Hull, HU3 6SU

01482 50 51 52

hulloffice@wigwamhomes.co.uk

f i g l i g w a m h o m e s . c o . u k

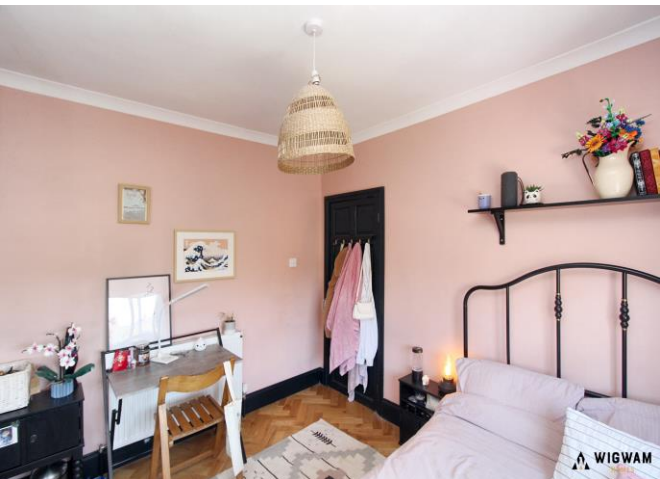
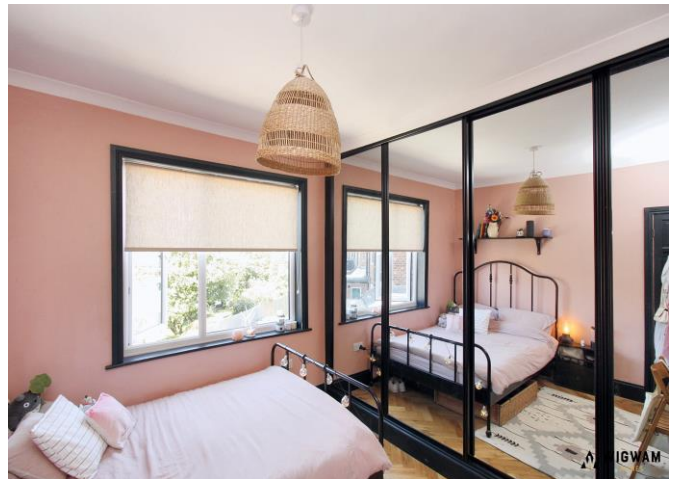


613 Anlaby Road, Hull, HU3 6SU

01482 50 51 52

hulloffice@wigwamhomes.co.uk

f i g l i g w a m h o m e s . c o . u k



613 Anlaby Road, Hull, HU3 6SU

01482 50 51 52

hulloffice@wigwamhomes.co.uk



wigwamhomes.co.uk



613 Anlaby Road, Hull, HU3 6SU

01482 50 51 52

hulloffice@wigwamhomes.co.uk

wigwamhomes.co.uk



**WIGWAM**  
HOMES



## Property DETAILS

### **Entrance Hall,**

With herringbone flooring, radiator, double glazed windows, stairs leading to the first floor, doors leading to the lounge/diner and kitchen/diner.

### **Lounge/Diner,**

With herringbone flooring, double glazed window, radiator, log burner and patio doors leading to the rear aspect.

### **Kitchen/Diner,**

With tiled flooring, quartz work surfaces, under mounted sink, double glazed windows, radiator, extractor fan, open arch to the rear porch, doors leading to the downstairs WC and the rear aspect.

### **Downstairs WC,**

With tiled flooring, towel radiator, wash hand basin, WC and double glazed window.

### **Bedroom 1,**

With herringbone flooring, radiator and double glazed window.

### **Bedroom 2,**

With herringbone flooring, double glazed window and radiator.

### **Bedroom 3,**

With herringbone flooring, radiator and double glazed windows.

### **Bathroom,**

With tiled flooring, WC, wash hand vanity basin, spotlights, towel radiator, bath cubicle with shower attachment and double glazed window.

### **Rear Garden,**

With lawn, patio, fence boundary and summer house.

### **Parking,**

Driveway to the front aspect.

### **Viewings,**

Strictly by appointment with selling agents. Please contact Wigwam Homes today to book your viewing.

### **Fixtures & Fittings ,**

Various fixtures and fittings may be available by separate negotiation and need to be confirmed prior to processing a formal offer.

### **Free Market Appraisals / Property Valuations,**

We at Wigwam Homes are delighted to offer any homeowner a FREE no obligation valuation on your property. Call today to book! Interested in selling? We offer zero tie-in periods and no-sale NO-fee! Call us now on 01482 50 51 52 to book a valuation.

### **Free Mortgage Consultations,**

At Wigwam Homes we have our own independent mortgage advisors with access to over 90 lenders. With so many mortgage products on the market, an independent advisor can show you all the various options and help you discover which one is right for you. We can also help with any property, income and personal insurances which you may need to complete your mortgage application.



Registered Address: 613 Anlaby Road, Hull, HU3 6SU

Company number: 08768041

Properties for Sale by Region | Properties to Let by Region | Privacy Policy