

Hull Road, Withernsea, HU19



Offers Over £170,000



Book your viewing now! Check out this fantastic 1930's semi-detached property with many original features! Briefly offering entrance hall, lounge, dining room, kitchen/diner, garage conversion/bedroom 4, storage, downstairs WC and conservatory to the ground floor. 3 bedrooms and bathroom to the first floor. Rear garden and driveway to the front aspect.

Situated on Hull Road in Withernsea which is a popular seaside resort that lies approximately 20 miles to the east of the city of Hull and offers a variety of shopping facilities including a Tesco supermarket together with schooling and recreational facilities such as it's private members 9/18-hole golf course with a 5* restaurant and clubhouse. Local attractions include the weekly market and the lighthouse which is well known as being the only one which is on-shore in the region.

Property HIGHLIGHTS

1930's Semi-Detached

3 Bedrooms

2 Reception Rooms

Garage Conversion / Bedroom 4

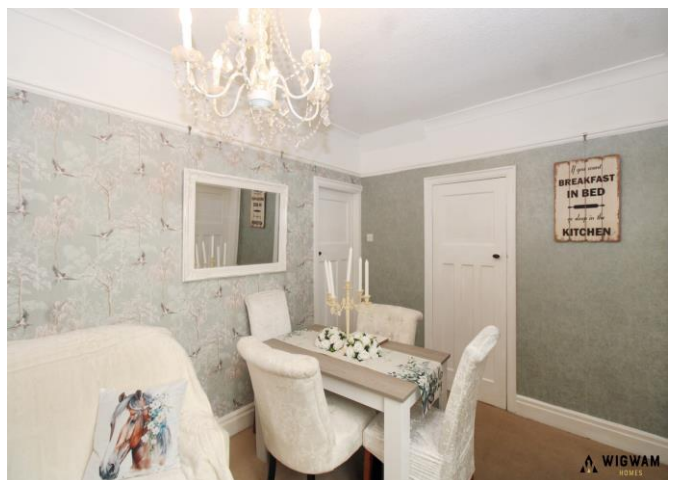
Driveway

613 Anlaby Road, Hull, HU3 6SU

01482 50 51 52

hulloffice@wigwamhomes.co.uk

f i n wigwamhomes.co.uk



613 Anlaby Road, Hull, HU3 6SU

01482 50 51 52

hulloffice@wigwamhomes.co.uk

f i in wigwamhomes.co.uk



613 Anlaby Road, Hull, HU3 6SU

01482 50 51 52

hulloffice@wigwamhomes.co.uk

f i n wigwamhomes.co.uk



613 Anlaby Road, Hull, HU3 6SU

01482 50 51 52

hulloffice@wigwamhomes.co.uk



wigwamhomes.co.uk



613 Anlaby Road, Hull, HU3 6SU

01482 50 51 52

hulloffice@wigwamhomes.co.uk

wigwamhomes.co.uk



WIGWAM
HOMES



613 Anlaby Road, Hull, HU3 6SU

01482 50 51 52

hulloffice@wigwamhomes.co.uk

wigwamhomes.co.uk



WIGWAM
HOMES



Property DETAILS

Entrance Hall,

With laminate flooring, radiator, stairs leading to the first floor, doors leading to the lounge and dining room.

Lounge,

With carpet flooring, period gas fireplace and double glazed bay window.

Dining Room,

With carpet flooring, double glazed window, feature fireplace, radiator, storage cupboard and door leading to the kitchen/diner.

Kitchen/Diner,

With laminate flooring, laminate work surfaces, breakfast bar, extractor hood, sink/drainage, 3 double glazed windows, radiator, space for appliances, door leading to garage conversion and open arch to conservatory.

Conservatory,

With laminate flooring and patio doors leading to the rear garden.

Downstairs WC,

With laminate flooring, WC, double glazed window and wash hand pedestal basin.

Garage Conversion,

Currently used as a bedroom and offering carpet flooring, and double glazed window.

Garage,

Storage to the front aspect of the garage.

Bedroom 1,

With carpet flooring, radiator, fitted wardrobes and double glazed bay window.

Bedroom 2,

With fitted wardrobes, carpet flooring and double glazed window.

Bedroom 3,

With carpet flooring, radiator and double-glazed window.

Bathroom,

Wet room with shower and freestanding bath, WC, double glazed window wash hand pedestal basin and towel radiator.

Rear Garden,

With patio, artificial grass, established trees and shrubs.

Viewings,

Strictly by appointment with selling agents. Please contact Wigwam Homes today to book your viewing.

Fixtures & Fittings,

Various fixtures and fittings may be available by separate negotiation and need to be confirmed prior to processing a formal offer.

Free Market Appraisals / Property Valuations

We at Wigwam Homes are delighted to offer any homeowner a FREE no obligation valuation on your property. Call today to book! Interested in selling? We offer zero tie-in periods and no-sale NO-fee! Call us now on 01482 50 51 52 to book a valuation.

Free Mortgage Consultations

At Wigwam Homes we have our own independent mortgage advisors with access to over 90 lenders. With so many mortgage products on the market, an independent advisor can show you all the various options and help you discover which one is right for you. We can also help with any property, income and personal insurances which you may need to complete your mortgage application.

About Us

At Wigwam Homes we take pride in the success we achieve for our clients. Whether it is selling your properties, finding your forever home, searching for a long-term rental investment or looking to profit from onward selling, the Wigwam team is here to guide you through the housing market.

Disclaimer

Here at Wigwam Homes, we try to ensure that all information in the advertisements is correct. However, we do advise any potential buyers to conduct their own viewing. The Agent has not checked the legal documentation to verify legal status of the property or the validity of any guarantee. A buyer must assume the information is incorrect, until it has been verified by their own solicitors. The measurements supplied are for general guidance, and as such must be considered as incorrect. A buyer is advised to re-check the measurements themselves before committing. Nothing concerning the type of construction or the condition of the structure is to be implied from the photograph of the property. These details are prepared as a general guide only, and should not be relied upon as a basis to enter into a legal contract, or to commit expenditure. An interested party should consult their own surveyor, solicitor or other professionals before committing themselves to any expenditure.



Registered Address: 613 Anlaby Road, Hull, HU3 6SU

Company number: 08768041

Properties for Sale by Region | Properties to Let by Region | Privacy Policy