



Coxwold Grove, Hull, HU4



Offers Over £150,000



NO CHAIN! Perfect family or first home now available! Briefly offering entrance hall, downstairs WC, kitchen/diner and lounge to the ground floor. 3 bedrooms and bathroom to the first floor. Rear garden and driveway to the side aspect.

Situated on Coxwold Grove close to local amenities such as the local Asda Superstore and Lidl. Other amenities close by including B&M Store, Wilko, Home Bargains and many more! Close to local transport links to and from the City Centre and surrounding areas.

Property **HIGHLIGHTS**

Semi-Detached

3 Bedrooms

Downstairs WC

Driveway

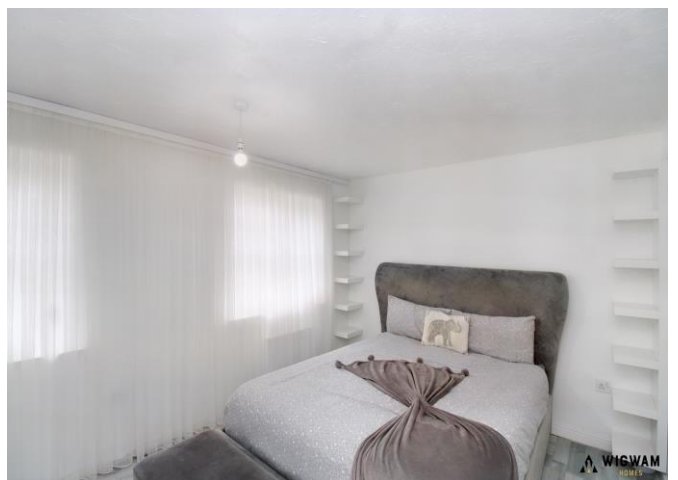
No Chain!

613 Anlaby Road, Hull, HU3 6SU

01482 50 51 52

hulloffice@wigwamhomes.co.uk

f i in wigwamhomes.co.uk



613 Anlaby Road, Hull, HU3 6SU

01482 50 51 52

hulloffice@wigwamhomes.co.uk

f i in wigwamhomes.co.uk



613 Anlaby Road, Hull, HU3 6SU

01482 50 51 52

hulloffice@wigwamhomes.co.uk

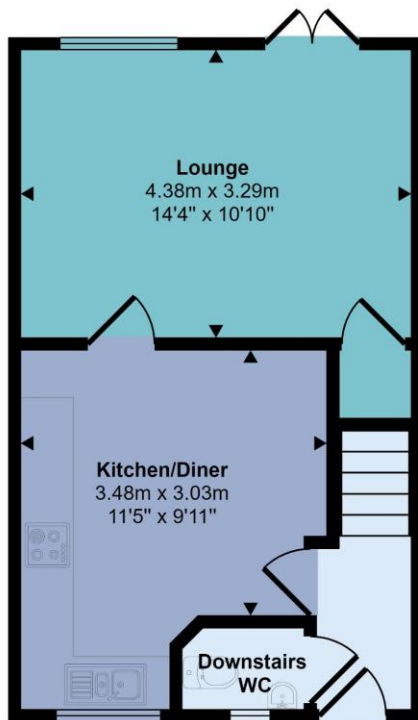


WIGWAM
HOMES



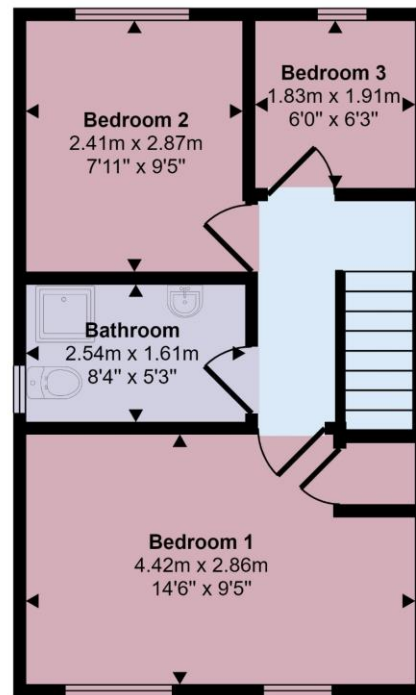
wigwamhomes.co.uk

Approx Gross Internal Area
67 sq m / 720 sq ft



Ground Floor

Approx 33 sq m / 359 sq ft



First Floor

Approx 34 sq m / 361 sq ft

This floorplan is only for illustrative purposes and is not to scale. Measurements of rooms, doors, windows, and any items are approximate and no responsibility is taken for any error, omission or mis-statement. Icons of items such as bathroom suites are representations only and may not look like the real items. Made with Made Snappy 360.



WIGWAM
HOMES

613 Anlaby Road, Hull, HU3 6SU

01482 50 51 52

hulloffice@wigwamhomes.co.uk



wigwamhomes.co.uk

Property DETAILS

Entrance Hall,

With laminate flooring, radiator, stairs leading to the first floor, doors leading to the downstairs WC and kitchen/diner.

Downstairs WC,

With tiled flooring, WC, wash hand vanity basin, radiator, double glazed window and central heating boiler.

Kitchen/Diner,

With laminate flooring, sink/drain, double glazed window, space for appliances, laminate work surfaces, radiator, hob, oven, extractor hood and door leading to the lounge.

Lounge,

With laminate flooring, double glazed window, under stair storage, radiator and patio doors leading to the rear aspect.

Bedroom 1,

With laminate flooring, double glazed windows, storage cupboard and radiator.

Bedroom 2,

With laminate flooring, double glazed window and radiator.

Bedroom 3,

With laminate flooring, double glazed window and radiator.

Bathroom,

With tiled flooring, shower cubicle, WC, towel radiator, wash hand vanity basin, double glazed window and spotlights.

Rear Garden,

With lawn, fence boundary, patio and access to the front aspect.

Parking,

Driveway to the side aspect.

Viewings,

Strictly by appointment with selling agents. Please contact Wigwam Homes today to book your viewing.

Fixtures & Fittings,

Various fixtures and fittings may be available by separate negotiation and need to be confirmed prior to processing a formal offer.

Free Market Appraisals,

We at Wigwam homes are delighted to offer any homeowner a free no obligation valuation on your property. With various packages available with no tie in periods and no sale no fee contracts! Call us now on 01482 505152.

Free Mortgage Consultations,

At Wigwam Homes we have our own independent mortgage advisors with access to over 90 lenders. With so many mortgage products on the market, an independent advisor can show you all the various options and help you discover which one is right for you. We can also help with property, income and personal insurances which may need to complete your mortgage application.

About Us,

At Wigwam Homes we take pride in the success we achieve for our clients. Whether it is selling your properties, finding your forever home, searching for a long-term rental investment or looking to profit from onward selling, the Wigwam team is here to guide you through the housing market.

Disclaimer

Here at Wigwam Homes, we try to ensure that all information in the advertisements is correct. However, we do advise any potential buyers to conduct their own viewing. The Agent has not checked the legal documentation to verify legal status of the property or the validity of any guarantee. A buyer must assume the information is incorrect, until it has been verified by their own solicitors. The measurements supplied are for general guidance, and as such must be considered as incorrect. A buyer is advised to re-check the measurements themselves before committing. Nothing concerning the type of construction or the condition of the structure is to be implied from the photograph of the property. These details are prepared as a general guide only, and should not be relied upon as a basis to enter into a legal contract, or to commit expenditure. An interested party should consult their own surveyor, solicitor or other professionals before committing themselves to any expenditure.



Registered Address: 613 Anlaby Road, Hull, HU3 6SU

Company number: 08768041

Properties for Sale by Region | Properties to Let by Region | Privacy Policy