



TOOMEY
ESTATE AGENTS



Glebe Court London Road Mitcham

£300,000
Leasehold

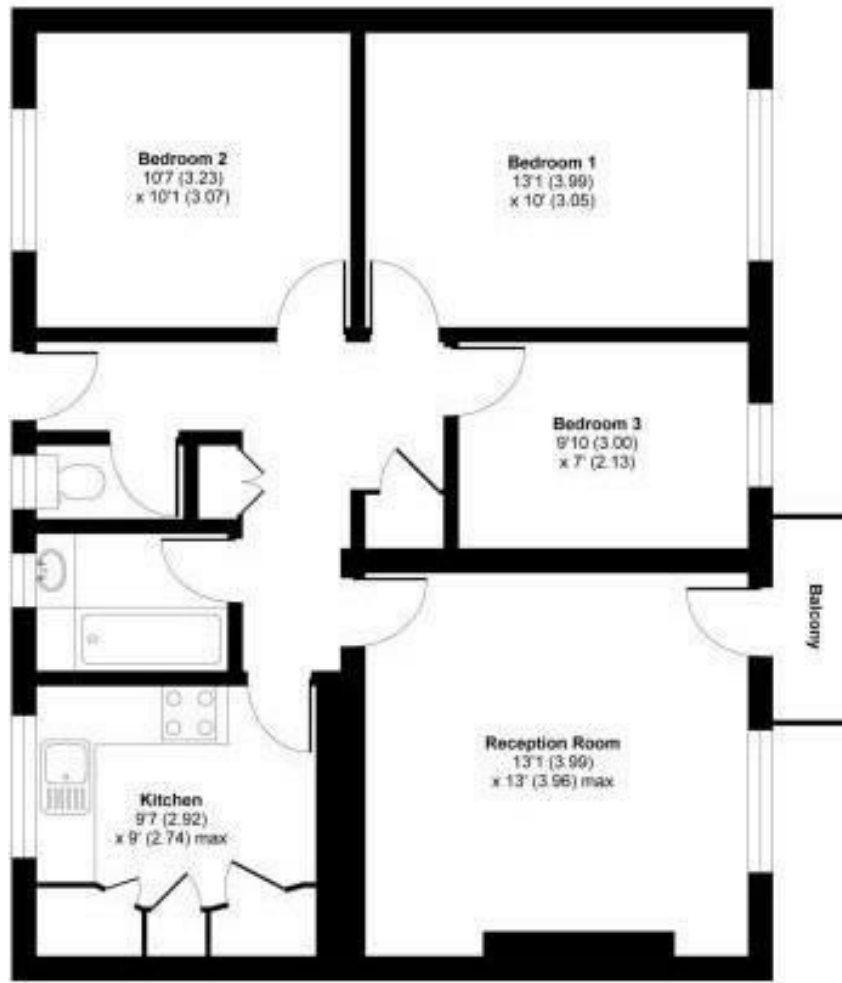
*** OFFERED WITH IMMEDIATE VACANT POSSESSION IS THIS SPACIOUS THREE BEDROOM GROUND FLOOR PURPOSE BUILT FLAT ***

The property has been recently refurbished and benefits from gas central heating, double glazing, good size accommodation and will be sold with the benefit of a NEW EXTENDED LEASE.

Other features of the property include a brand new fitted kitchen, modern bathroom suite, new flooring throughout, three good size bedrooms, separate wc and storage space. The property will be sold with NO FORWARD CHAIN and is ready to move into.

Glebe Court is a popular development in the heart of Mitcham town centre with access to local transport links





Energy Efficiency Rating		Current	Potential
Very energy efficient - lower running costs			
(92 plus) A			
(81-91) B			
(69-80) C			
(55-68) D			
(39-54) E			
(21-38) F			
(1-20) G			
Not energy efficient - higher running costs			
England & Wales		EU Directive 2002/91/EC	
		63	78

Agents Note: Whilst every care has been taken to prepare these particulars, they are for guidance purposes only. All measurements are approximate and are for general guidance purposes only and whilst every care has been taken to ensure their accuracy, they should not be relied upon and potential buyers/tenants are advised to recheck the measurements

Toomey Estate Agents Sales

333a London Road
Mitcham
Surrey
CR4 4BE

0208 715 9333

enquiries@toomeyestateagents.co.uk

www.toomeyestateagents.co.uk

