



22 OAKMEAD ROAD BEDDINGTON, CR0 3AS

£390,000
FREEHOLD

* OFFERED WITH NO FORWARD CHAIN IS THIS SPACIOUS THREE BEDROOM TERRACE HOUSE IN THIS POPULAR CUL-DE-SAC AND ON THE EDGE OF MITCHAM COMMON

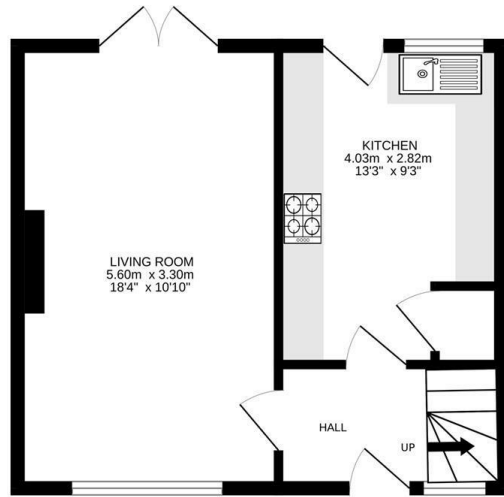
The property features a good size double aspect lounge and kitchen with access onto the garden. The upstairs comprises of three good size bedrooms and a modern shower room/wc.

This terrace house also benefits from an attractive south west facing landscaped rear garden with patio, off street parking for two cars and double glazing.

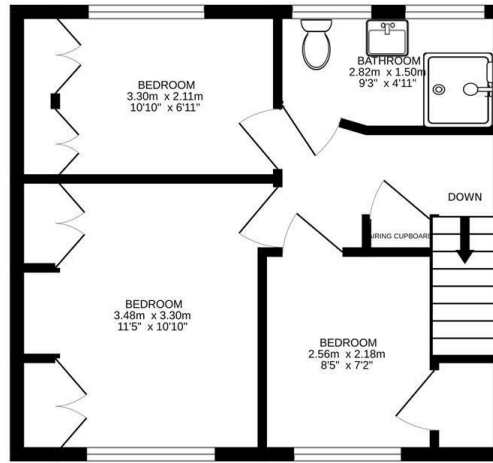
Oakmead Road is conveniently located for the Tram link which provides access to Both Croydon and Wimbledon town centres. The Tram will also link into the mainline station at Mitcham Junction



TOOMEY
ESTATE AGENTS

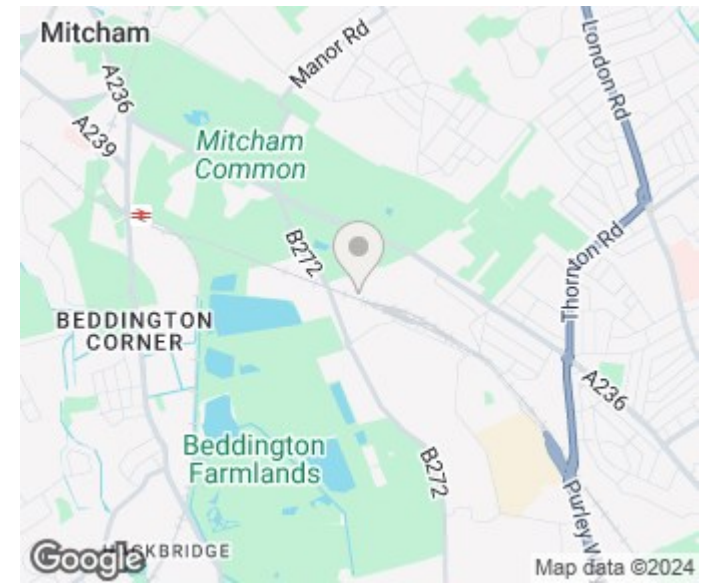


Ground floor
34.0 sq.m. (366 sq.ft.) approx.



1st floor
34.3 sq.m. (369 sq.ft.) approx.

TOTAL FLOOR AREA : 68.2 sq.m. (735 sq.ft.) approx.
Measurements are approximate. Not to scale. Illustrative purposes only
Made with Metropix ©2023



Energy Efficiency Rating		Current	Potential
Very energy efficient - lower running costs			
(92 plus)	A		
(81-91)	B		79
(69-80)	C		
(55-68)	D		
(39-54)	E		
(21-38)	F		
(1-20)	G	12	
Not energy efficient - higher running costs			
England & Wales		EU Directive 2002/91/EC	

Agents Note: Whilst every care has been taken to prepare these particulars, they are for guidance purposes only. All measurements are approximate and are for general guidance purposes only and whilst every care has been taken to ensure their accuracy, they should not be relied upon and potential buyers/tenants are advised to recheck the measurements

Toomey Estate Agents Sales
333a London Road
Mitcham
Surrey
CR4 4BE

0208 715 9333
enquiries@toomeyestateagents.co.uk
www.toomeyestateagents.co.uk



TOOMEY
ESTATE AGENTS