



15 MITCHAM PARK MITCHAM, CR4 4EN

£309,950
LEASEHOLD

*** A SPACIOUS TWO BEDROOM FIRST FLOOR FLAT FORMING PART OF THIS ATTRACTIVE PERIOD BUILDING IN THE WELL REGARDED MITCHAM PARK CONVERSATION AREA ***

This good size two bedroom flat features a good size lounge with fireplace, modern kitchen and bathroom suite, two bedrooms, double glazing and parking space, balcony and a long lease.

Mitcham Park is a popular area of Mitcham near to the Cricket Green and offering access to Mitcham Junction railway station and the local Tram Link. There are also a number of local bus services close by.

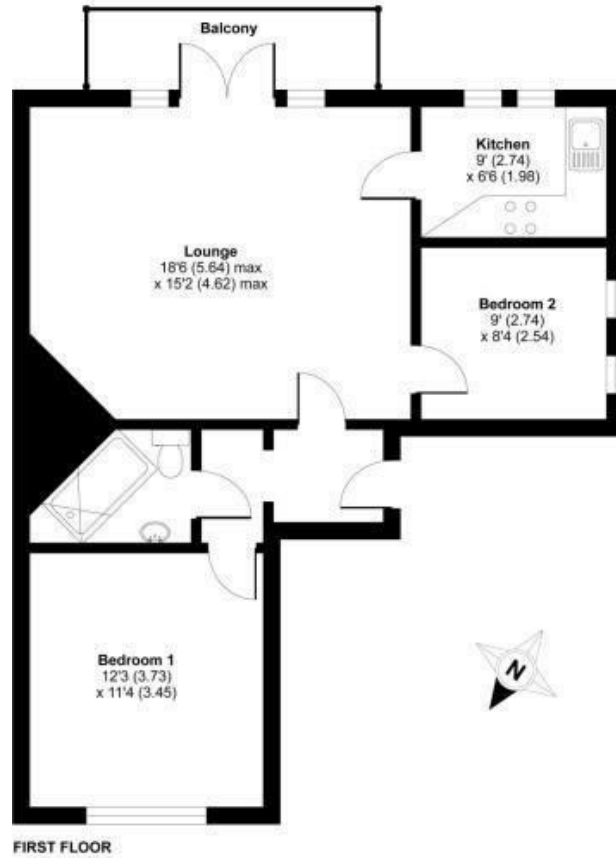
The property is offered for sale with * NO FORWARD CHAIN *



TOOMEY
ESTATE AGENTS

Mitcham Park, Mitcham, CR4

APPROX. GROSS INTERNAL FLOOR AREA 647 SQ FT 60.1 SQ METRES



Energy Efficiency Rating		Current	Potential
Very energy efficient - lower running costs			
(92 plus) A			
(81-91) B			
(69-80) C			78
(55-68) D		51	
(39-54) E			
(21-38) F			
(1-20) G			
Not energy efficient - higher running costs			
England & Wales		EU Directive 2002/91/EC	

Agents Note: Whilst every care has been taken to prepare these particulars, they are for guidance purposes only. All measurements are approximate and are for general guidance purposes only and whilst every care has been taken to ensure their accuracy, they should not be relied upon and potential buyers/tenants are advised to recheck the measurements

Toomey Estate Agents Lettings
 333a London Road
 Mitcham
 Surrey
 CR4 4BE

0208 715 9333
 enquiries@toomeyestateagents.co.uk
 www.toomeyestateagents.co.uk

