

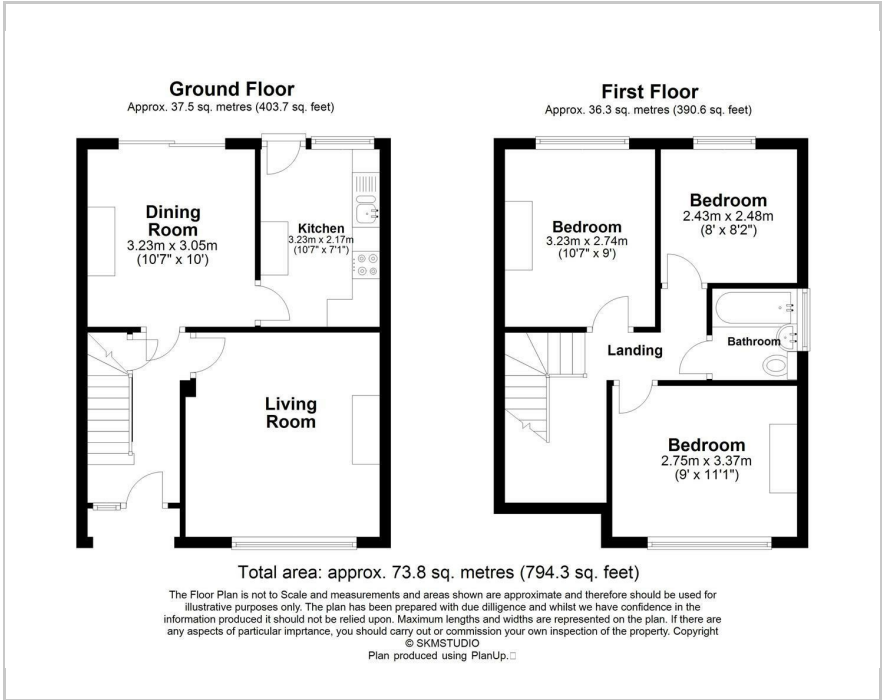
grosvenor
estate agents



35 Beechcroft Avenue, Croxley Green, WD3 3EG
Price Guide £575,000



Floor Plan



Area Map



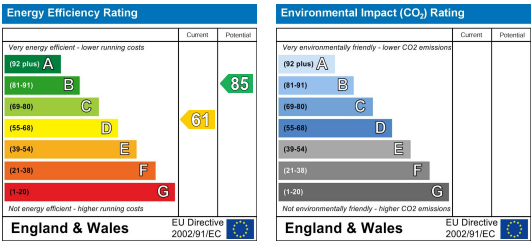
Accommodation

- 3 Bed semi detached home with scope to extend
- Easy walking distance to the Met Line Station
- Close to Malvern Way and Croxley Danes schools
- Separate front reception room and rear diner and kitchen.
- Peaceful location within walking distance of Grand Union Canal and Croxley Moors
- Good size, pretty rear garden

Viewing

Please contact our Grosvenor Estate Agents Ltd Office on 01923 711651 if you wish to arrange a viewing appointment for this property or require further information.

Energy Efficiency Graph



These particulars, whilst believed to be accurate are set out as a general outline only for guidance and do not constitute any part of an offer or contract. Intending purchasers should not rely on them as statements of representation of fact, but must satisfy themselves by inspection or otherwise as to their accuracy. No person in this firms employment has the authority to make or give any representation or warranty in respect of the property.