



Flat 1 2a Barton Way

, Croxley Green, WD3 3QA

£1,600 PCM

Recently and beautifully presented ground floor apartment in the sought central village location of Barton Way. Close to all amenities.

The property has a hallway, through reception room, kitchen/breakfast room, 2 bedrooms & bathroom with Jack & Jill bathroom. Garden with large shed and lawn area. front parking for 2 cars. DG, GCH. Available end of October.

- Ground floor beautifully presented apartment.
- 2 bedrooms, jack & Jill bathroom
- kitchen, reception.
- GCH, DG, Front parking for 2 cars, own garden
- Central village location
- available end of October 2024

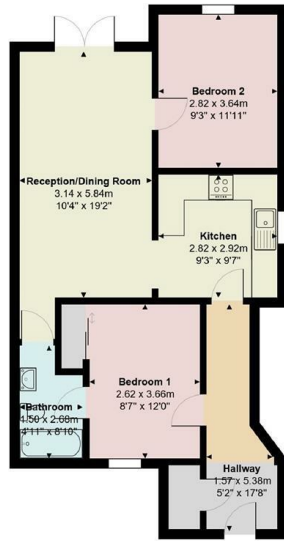
Viewing

Please contact our Grosvenor Estate Agents Ltd Office on 01923 711651

if you wish to arrange a viewing appointment for this property or require further information.



Floor Plan

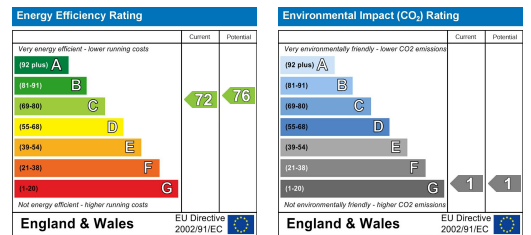


Total Area: 63.6 m² ... 685 ft²
All measurements are approximate and for display purposes only

Area Map



Energy Efficiency Graph



These particulars, whilst believed to be accurate are set out as a general outline only for guidance and do not constitute any part of an offer or contract. Intending purchasers should not rely on them as statements of representation of fact, but must satisfy themselves by inspection or otherwise as to their accuracy. No person in this firm's employment has the authority to make or give any representation or warranty in respect of the property.

163 New Road, Croxley Green, Hertfordshire, WD3 3HB

Tel: 01923 711651 Email: sales@grosvenorestateagents.co.uk www.grosvenorstates.co.uk