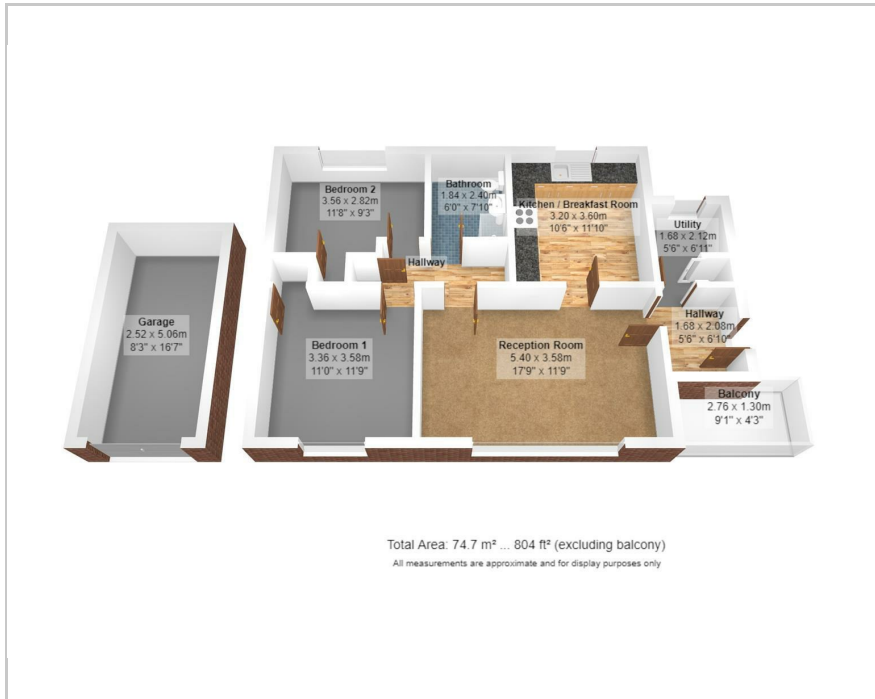


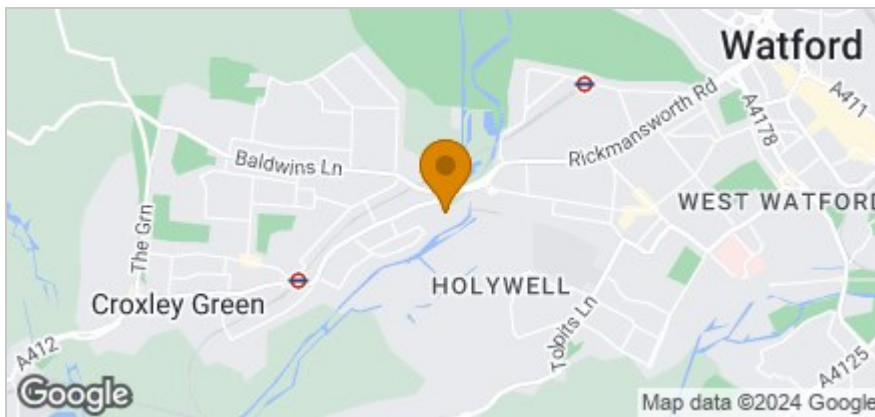
115 Sycamore Road, Croxley Green, WD3 3TE  
Price Guide £345,000



## Floor Plan



## Area Map



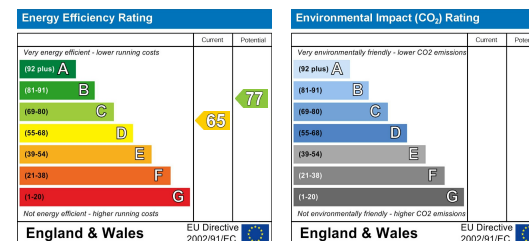
## Accommodation

- Good size 2 Bed second floor leasehold flat
- Long lease, low service charge
- Garage in block
- Balcony over looking beautiful communal garden next to the Grand Union Canal
- Close to Croxley Danes and Met Line station
- NO UPPER CHAIN

## Viewing

Please contact our Grosvenor Estate Agents Ltd Office on 01923 711651 if you wish to arrange a viewing appointment for this property or require further information.

## Energy Efficiency Graph



These particulars, whilst believed to be accurate are set out as a general outline only for guidance and do not constitute any part of an offer or contract. Intending purchasers should not rely on them as statements of representation of fact, but must satisfy themselves by inspection or otherwise as to their accuracy. No person in this firm's employment has the authority to make or give any representation or warranty in respect of the property.