



202 New Road, Croxley Green, WD3 3HH
Price Guide £495,000



2



1

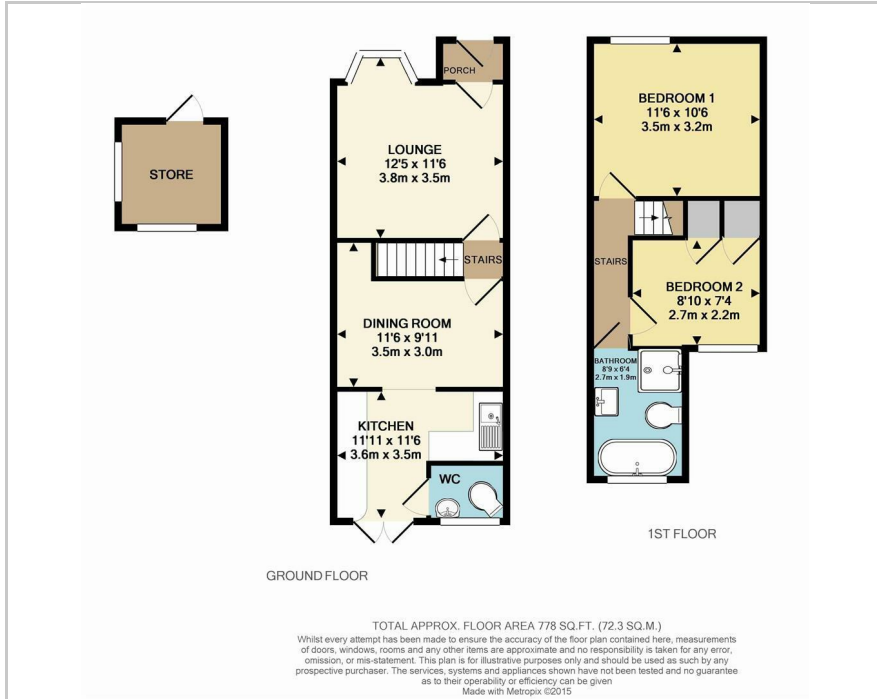


2

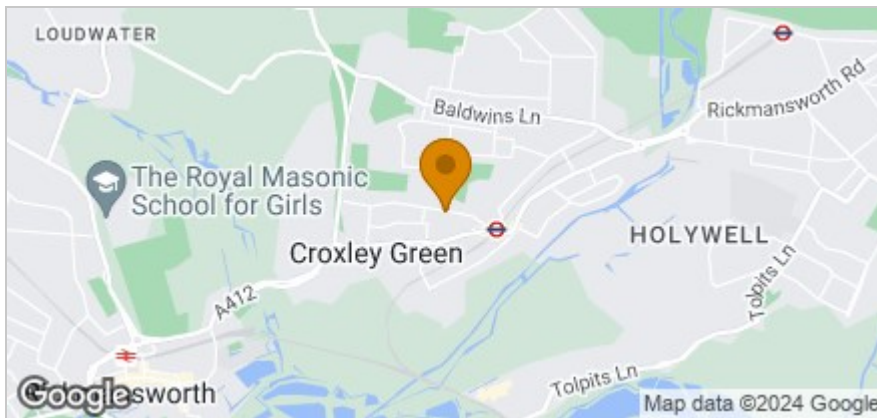


D

Floor Plan



Area Map



Accommodation

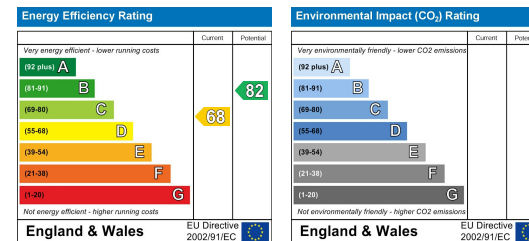
- Central village location
- Close to Met Line station
- Extended 2 bed mid terrace
- Good size kitchen with breakfast bar
- Bathroom off landing
- South facing garden
- Through lounge/dining room
- Utility/W.C. OSP for 1 car



Viewing

Please contact our Grosvenor Estate Agents Ltd Office on 01923 711651 if you wish to arrange a viewing appointment for this property or require further information.

Energy Efficiency Graph



These particulars, whilst believed to be accurate are set out as a general outline only for guidance and do not constitute any part of an offer or contract. Intending purchasers should not rely on them as statements of representation of fact, but must satisfy themselves by inspection or otherwise as to their accuracy. No person in this firm's employment has the authority to make or give any representation or warranty in respect of the property.