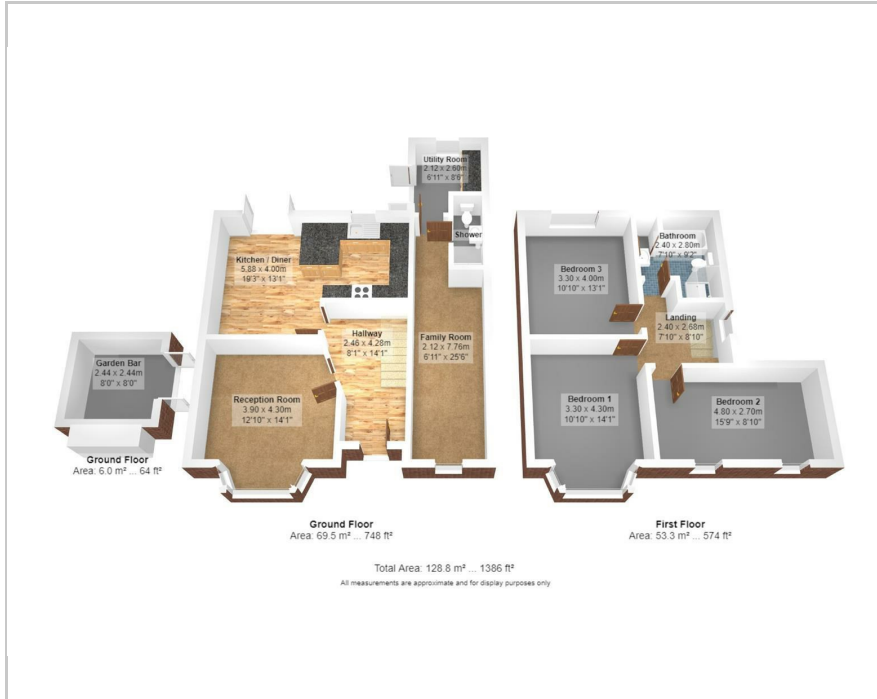




2 Warwick Way, Croxley Green, Rickmansworth, WD3 3SA  
Price Guide £825,000

 4  2  2  D

## Floor Plan



## Area Map



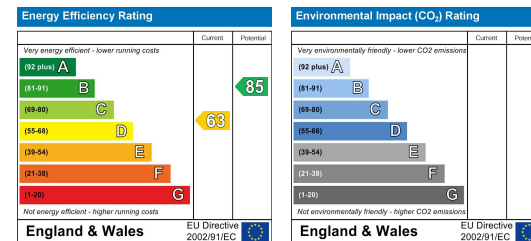
## Accommodation

- Fabulous extended 4 bed, 2 reception semi detached
- Super secluded rear garden with outdoor bar/games room
- Utility room, large downstairs wetroom/w.c. study
- Good size open plan kitchen and dining room
- Close to Croxley Danes, Little Green and Malvern Way schools
- Walking distance to Met Line station
- GCH, DG & OSP for 3 cars

## Viewing

Please contact our Grosvenor Estate Agents Ltd Office on 01923 711651 if you wish to arrange a viewing appointment for this property or require further information.

## Energy Efficiency Graph



These particulars, whilst believed to be accurate are set out as a general outline only for guidance and do not constitute any part of an offer or contract. Intending purchasers should not rely on them as statements of representation of fact, but must satisfy themselves by inspection or otherwise as to their accuracy. No person in this firm's employment has the authority to make or give any representation or warranty in respect of the property.