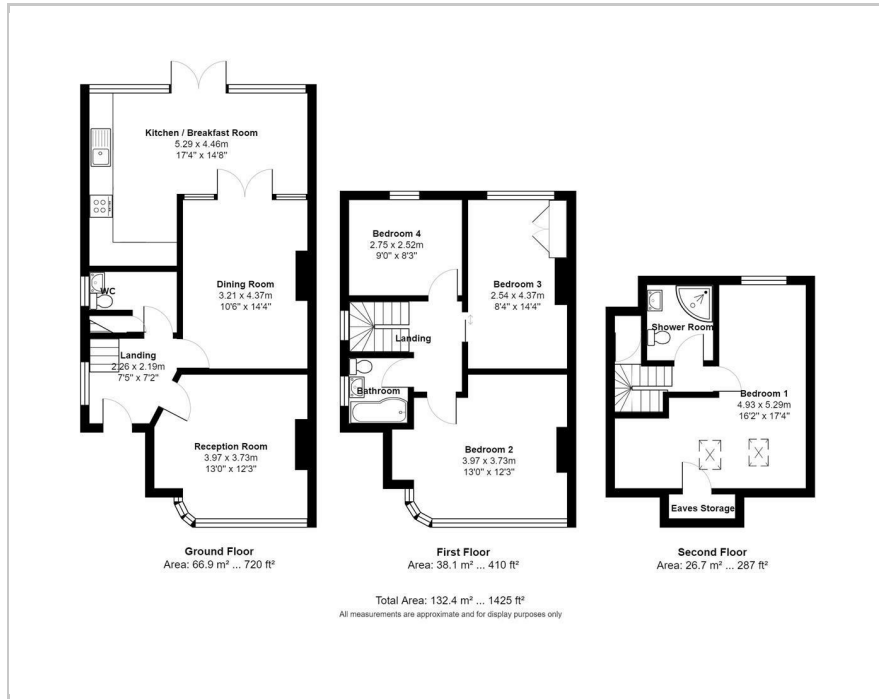




25 Oakleigh Drive, Croxley Green, WD3 3EE
Offers In The Region Of £700,000



Floor Plan



Area Map



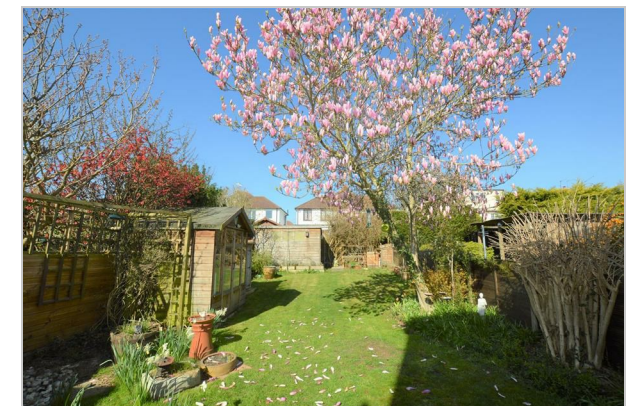
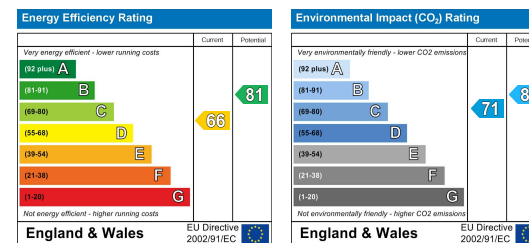
Accommodation

- Extended 4 bed semi-detached, master with separate shower room
- 5-minute walk to Metropolitan Line station
- Close to excellent junior and senior schools
- Gorgeous rear secluded garden with workshop and summer house
- Bright and sunny kitchen/breakfast room
- Close to Grand Union Canal (5-minute walk) and Croxley Moors; ideal for walkers
- Off Street Parking for 2 cars
- Bespoke 1930's style leded front door

Viewing

Please contact our Grosvenor Estate Agents Ltd Office on 01923 711651 if you wish to arrange a viewing appointment for this property or require further information.

Energy Efficiency Graph



These particulars, whilst believed to be accurate are set out as a general outline only for guidance and do not constitute any part of an offer or contract. Intending purchasers should not rely on them as statements of representation of fact, but must satisfy themselves by inspection or otherwise as to their accuracy. No person in this firm's employment has the authority to make or give any representation or warranty in respect of the property.