



OFFERS IN EXCESS OF
£520,000
Kenbury Street
London, SE5 9BU

GARETH
JAMES

PROPERTY SUMMARY

With natural light, high ceilings, period fireplaces and hard wood flooring throughout, this well-proportioned flat extends to approximately 781 sq ft and is positioned on the top floor of an attractive purpose built period mansion block. The property further benefits from its own private west-facing balcony, offering an excellent outdoor extension to the living space.

2



1



2







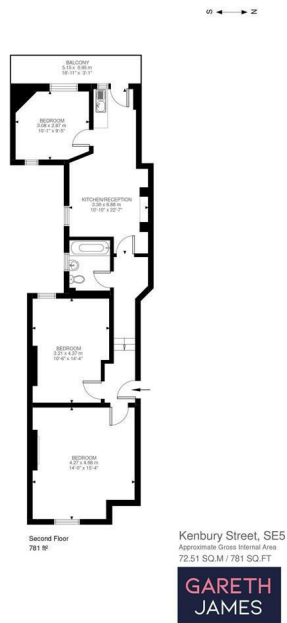
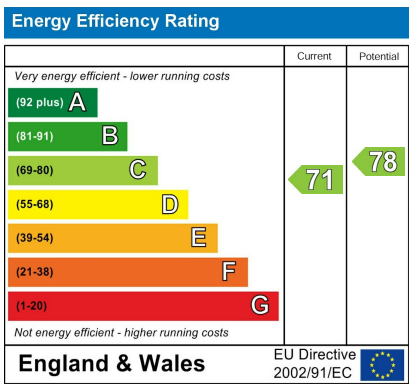


Illustration for identification purposes only. Not to scale.
Floor Plan Drawn According To RICS Guidelines.

2	
1	
2	



Agents Note: Whilst every care has been taken to prepare these particulars, they are for guidance purposes only. All measurements are approximate and are for general guidance purposes only and whilst every care has been taken to ensure their accuracy, they should not be relied upon and potential buyers/tenants are advised to recheck the measurements

GARETH JAMES	OFFICE ADDRESS	OFFICE DETAILS
	129 Bellenden Road London SE15 4QY	02077324330 sales@garethjames.com https://www.garethjames.com/