



OFFERS IN EXCESS OF
£900,000
Kirkwood Road
Peckham, SE15 3XT

GARETH
JAMES

PROPERTY SUMMARY

A beautifully presented Victorian three-bedroom terraced home, enviably located on one of Nunhead's most desirable roads.

3



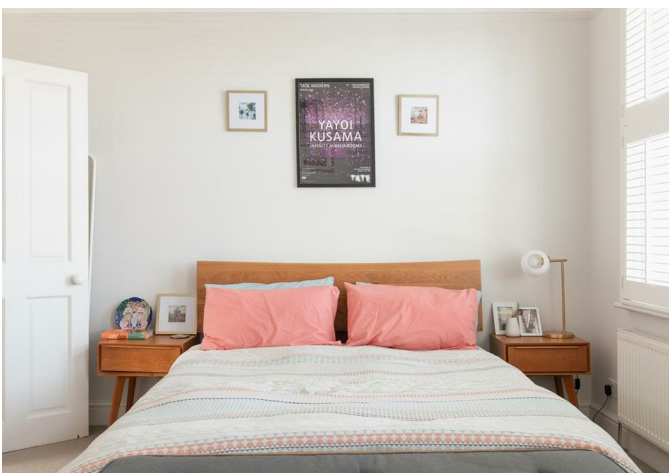
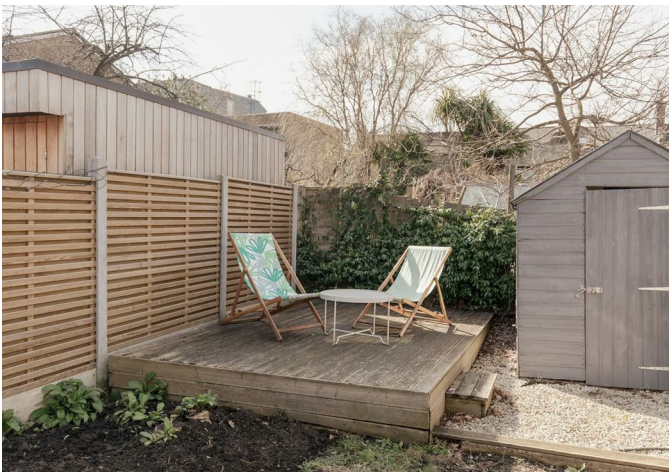
1



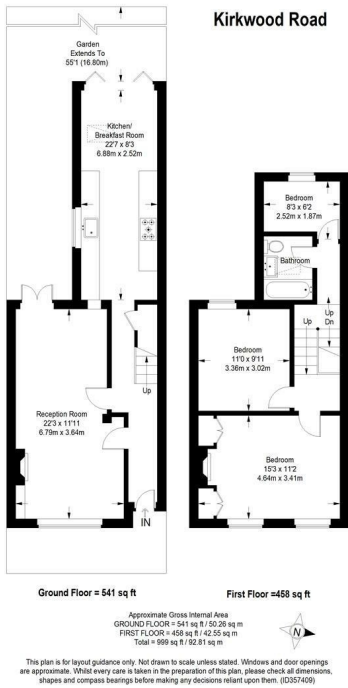
2











Energy Efficiency Rating		
	Current	Potential
Very energy efficient - lower running costs		
(92 plus) A		
(81-91) B		
(69-80) C		
(55-68) D		
(39-54) E		
(21-38) F		
(1-20) G		
Not energy efficient - higher running costs		
England & Wales	EU Directive 2002/91/EC	

Agents Note: Whilst every care has been taken to prepare these particulars, they are for guidance purposes only. All measurements are approximate and are for general guidance purposes only and whilst every care has been taken to ensure their accuracy, they should not be relied upon and potential buyers/tenants are advised to recheck the measurements

OFFICE ADDRESS
129 Bellenden Road
London
SE15 4QY

OFFICE DETAILS
02077324330
sales@garethjames.com
<https://www.garethjames.com/>