

AUCTION GUIDE

£300,000

Borland Road

London, SE15 3BL

GARETH
JAMES

PROPERTY SUMMARY

Being Sold via Secure Sale. Terms & Conditions apply. Starting offers £350,000

Spanning an impressive 967 sq ft, this three double bedroom, purpose-built apartment is a rare find.

3



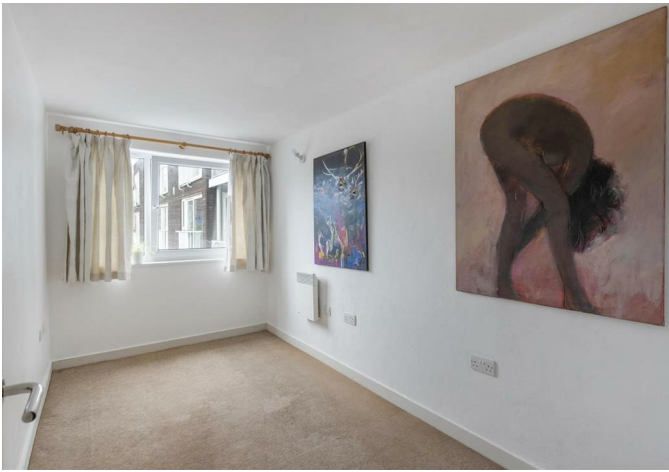
2



1







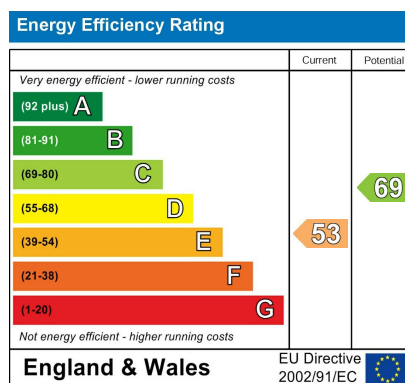




Borland Road, SE15
Approximate Gross Internal Area
89.81 SQ.M / 967 SQ.FT

**GARETH
JAMES**

Illustration for identification purposes only. Not to scale.
Floor Plan Drawn According To NICS Guidelines



Agents Note: Whilst every care has been taken to prepare these particulars, they are for guidance purposes only. All measurements are approximate and are for general guidance purposes only and whilst every care has been taken to ensure their accuracy, they should not be relied upon and potential buyers/tenants are advised to recheck the measurements

**GARETH
JAMES**

OFFICE ADDRESS
129 Bellenden Road
London
SE15 4QY

OFFICE DETAILS
02077324330
sales@garethjames.com
<https://www.garethjames.com/>