



£340,000

Beechcroft Close, Valley

London, SW16 2EW

GARETH
JAMES

PROPERTY SUMMARY

A recently redecorated two-bedroom ground apartment, ideally situated close to all the amenities Streatham has to offer.

2



1

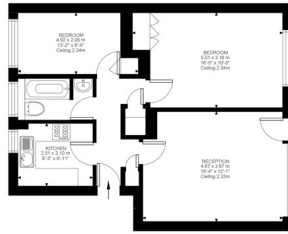


1









Ground Floor
622 sq ft

Valley Road, SW16
Approximate Gross Internal Area
57.76 SQ.M / 622 SQ.FT

Illustration for identification purposes only. Not to scale.
Floor Plan Drawn According To NCC Guidelines.

2	
1	
1	

Energy Efficiency Rating		
	Current	Potential
<i>Very energy efficient - lower running costs</i>		
(92 plus) A		
(81-91) B		
(69-80) C	76	80
(55-68) D		
(39-54) E		
(21-38) F		
(1-20) G		
<i>Not energy efficient - higher running costs</i>		
England & Wales	EU Directive 2002/91/EC	

Agents Note: Whilst every care has been taken to prepare these particulars, they are for guidance purposes only. All measurements are approximate and are for general guidance purposes only and whilst every care has been taken to ensure their accuracy, they should not be relied upon and potential buyers/tenants are advised to recheck the measurements

<h1 style="margin: 0;">GARETH JAMES</h1>	<p>OFFICE ADDRESS 129 Bellenden Road London SE15 4QY</p>	<p>OFFICE DETAILS 02077324330 sales@garethjames.com https://www.garethjames.com/</p>
----------------------------------------------	-----------------------------------------------------------------------------	----------------------------------------------------------------------------------------------------------------------------------------------------