

OFFERS IN THE REGION OF

**£340,000**

**Marmont Road**

London, SE15 5TE

**GARETH  
JAMES**



## PROPERTY SUMMARY

Located on a quiet residential road, this well-proportioned one-bedroom apartment occupies the top floor of a charming Victorian terrace.

1



1



1

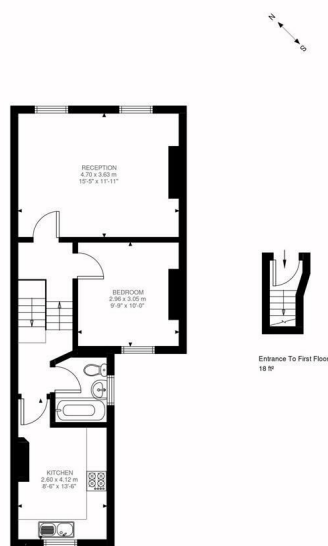












First Floor  
526 sq ft

Marmont Road, SE15  
Approximate Gross Internal Area  
48.82 SQ.M / 526 SQ.FT




Illustration for identification purposes only. Not to scale.  
Floor Plan Drawn According To RICS Guidelines.

1 | 

1 | 

1 | 

Energy Efficiency Rating		
	Current	Potential
Very energy efficient - lower running costs		
(92 plus) <b>A</b>		
(81-91) <b>B</b>		
(69-80) <b>C</b>		
(55-68) <b>D</b>		
(39-54) <b>E</b>		
(21-38) <b>F</b>		
(1-20) <b>G</b>		
Not energy efficient - higher running costs		
<b>England &amp; Wales</b>	EU Directive 2002/91/EC	

Agents Note: Whilst every care has been taken to prepare these particulars, they are for guidance purposes only. All measurements are approximate and are for general guidance purposes only and whilst every care has been taken to ensure their accuracy, they should not be relied upon and potential buyers/tenants are advised to recheck the measurements

<b>GARETH JAMES</b>	<b>OFFICE ADDRESS</b>	<b>OFFICE DETAILS</b>
	129 Bellenden Road London SE15 4QY	02077324330 sales@garethjames.com <a href="https://www.garethjames.com/">https://www.garethjames.com/</a>