



GUIDE PRICE

**£600,000**

**Sumner Road**

London, SE15 6PQ

**GARETH  
JAMES**

## PROPERTY SUMMARY

\*\*Guide price £600,000 - £625,000\*\*

Set within a quaint modern development on a residential road, this spacious two-bedroom ground-floor apartment, complete with a private patio, is finished to a high specification.

2



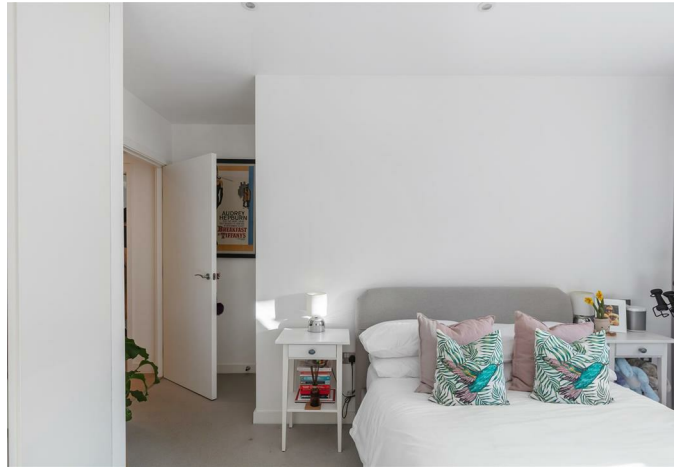
2



1











Ground Floor  
841 SF

Sumner Road, SE15  
Approximate Gross Internal Area  
78.10 SQ.M / 841 SQ.FT



Illustration for identification purposes only. Not to scale.  
Floor Plan Drawn According To RICS Guidelines.

2	
2	
1	

Energy Efficiency Rating		
	Current	Potential
<i>Very energy efficient - lower running costs</i>		
(92 plus) <b>A</b>		
(81-91) <b>B</b>		
(69-80) <b>C</b>		
(55-68) <b>D</b>		
(39-54) <b>E</b>		
(21-38) <b>F</b>		
(1-20) <b>G</b>		
<i>Not energy efficient - higher running costs</i>		
<b>England &amp; Wales</b>	EU Directive 2002/91/EC	

Agents Note: Whilst every care has been taken to prepare these particulars, they are for guidance purposes only. All measurements are approximate and are for general guidance purposes only and whilst every care has been taken to ensure their accuracy, they should not be relied upon and potential buyers/tenants are advised to recheck the measurements

	<b>OFFICE ADDRESS</b> 129 Bellenden Road London SE15 4QY	<b>OFFICE DETAILS</b> 02077324330 sales@garethjames.com <a href="https://www.garethjames.com/">https://www.garethjames.com/</a>
--	---	--