

OFFERS IN EXCESS OF

£1,100,000

Hollydale Road
SE15 2TQ

GARETH
JAMES

PROPERTY SUMMARY

We are delighted to present a rare opportunity to acquire a charming three-bedroom terraced home on Hollydale Road, fully renovated to an exceptional standard and extended to the side and rear. Ideally situated just moments from the heart of Nunhead, one of London's most sought-after locales.

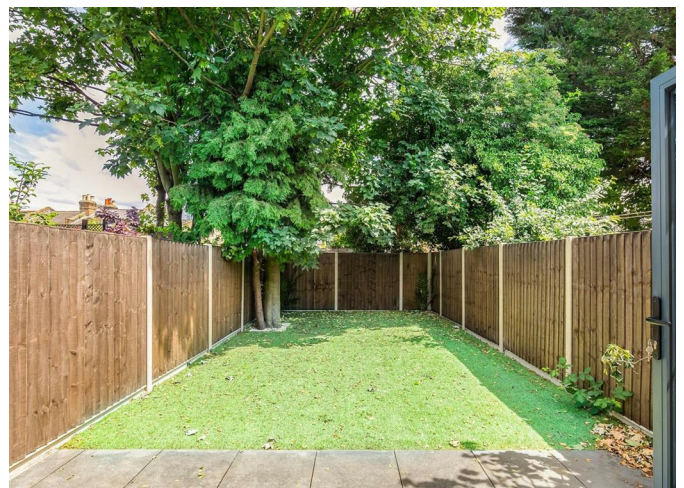
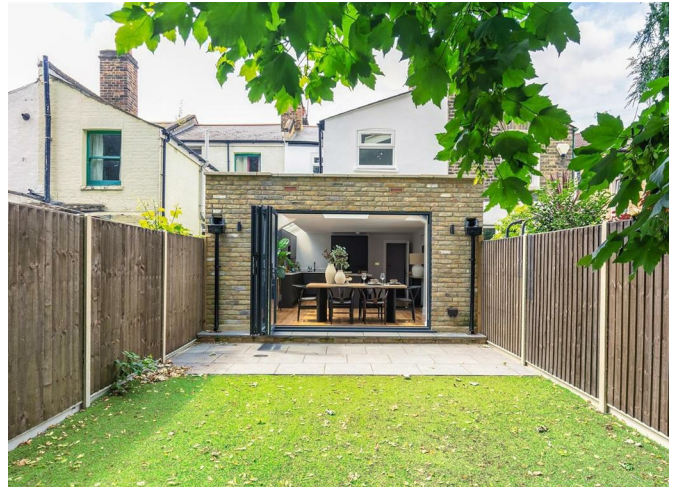
3



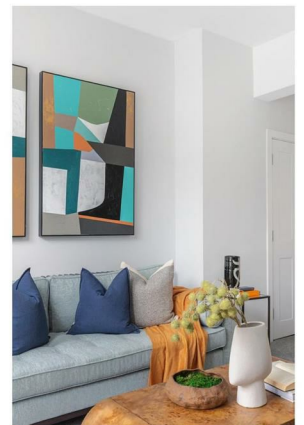
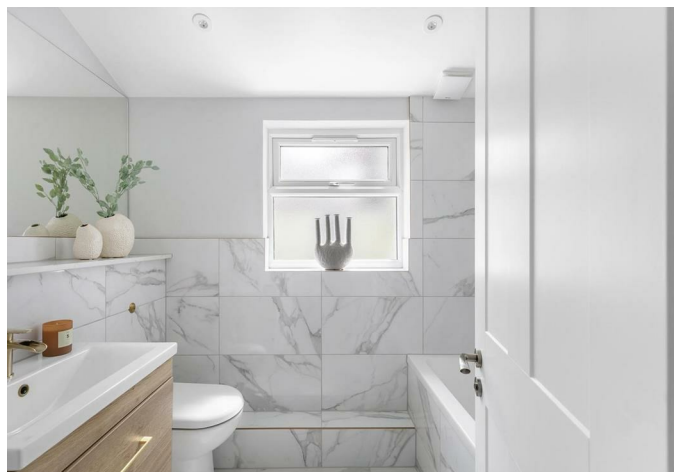
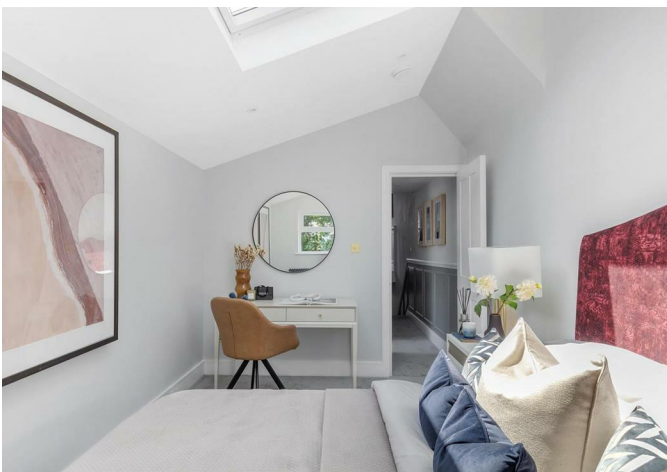
1

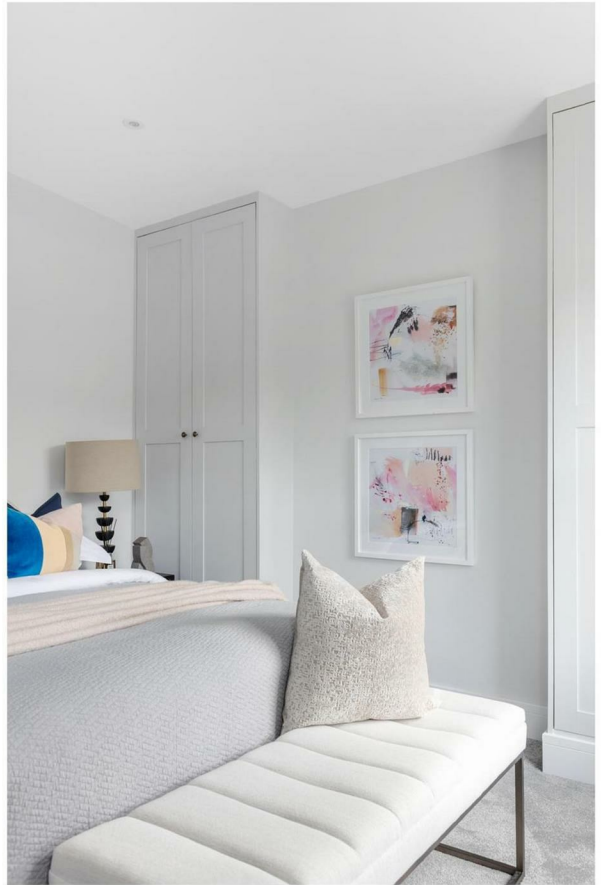
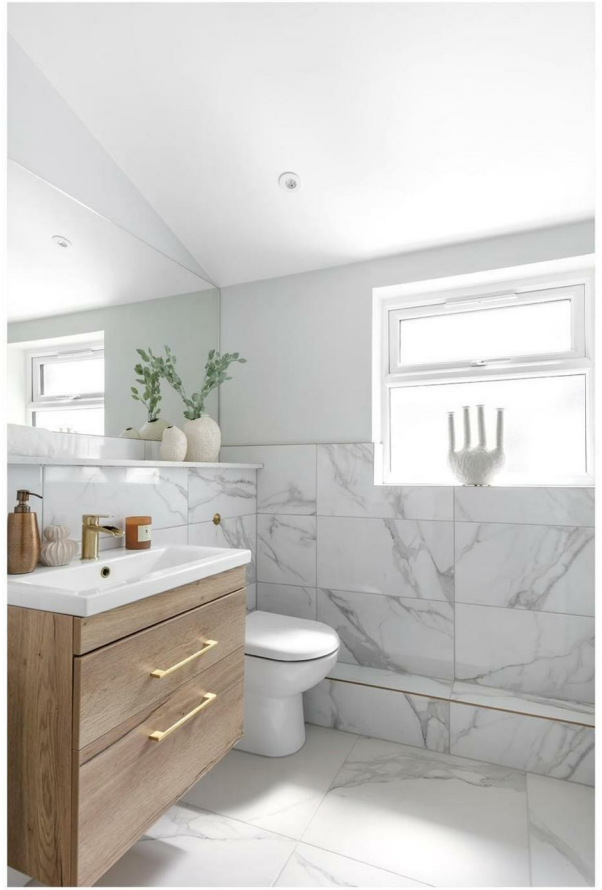


2









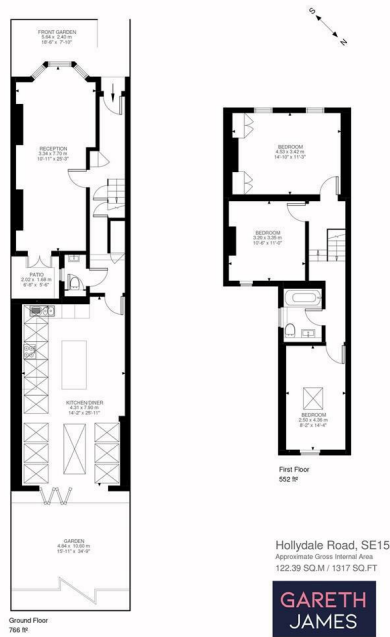



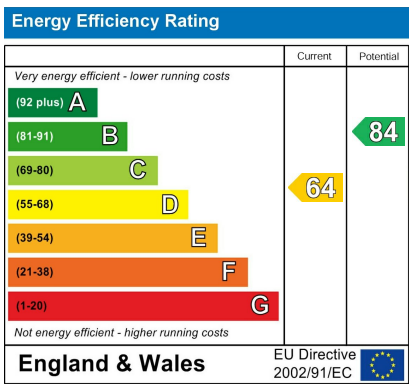


Illustration for identification purposes only. Not to scale.
Floor Plan Drawn According To RICS Guidelines.

3 

1 

2 



Agents Note: Whilst every care has been taken to prepare these particulars, they are for guidance purposes only. All measurements are approximate and are for general guidance purposes only and whilst every care has been taken to ensure their accuracy, they should not be relied upon and potential buyers/tenants are advised to recheck the measurements

GARETH JAMES

OFFICE ADDRESS
129 Bellenden Road
London
SE15 4QY

OFFICE DETAILS
02077324330
sales@garethjames.com
<https://www.garethjames.com/>