



OFFERS IN THE REGION OF

£550,000

Fenwick Road

, SE15 4HS

**GARETH
JAMES**

PROPERTY SUMMARY

Spread across the top two floors of a stunning Victorian conversion, this split-level, two-bedroom share of freehold apartment with access to a spacious communal garden is a must-see.

2



1

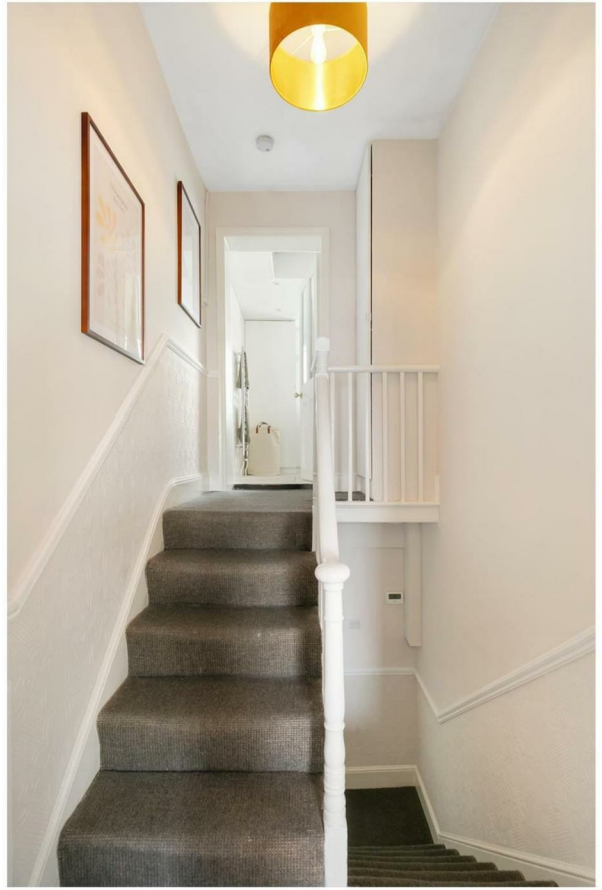


1











Fenwick Road, SE15
 Approximate Gross Internal Area
 62.37 SQ.M / 671 SQ.FT



Illustration for identification purposes only. Not to scale.
 Floor Plan Drawn According To RICS Guidelines.

2
 1
 1

Energy Efficiency Rating		
	Current	Potential
Very energy efficient - lower running costs		
(92 plus) A		
(81-91) B		
(69-80) C		
(55-68) D	61	70
(39-54) E		
(21-38) F		
(1-20) G		
Not energy efficient - higher running costs		
England & Wales	EU Directive 2002/91/EC	

Agents Note: Whilst every care has been taken to prepare these particulars, they are for guidance purposes only. All measurements are approximate and are for general guidance purposes only and whilst every care has been taken to ensure their accuracy, they should not be relied upon and potential buyers/tenants are advised to recheck the measurements

<h1>GARETH JAMES</h1>	OFFICE ADDRESS 129 Bellenden Road London SE15 4QY	OFFICE DETAILS 02077324330 sales@garethjames.com https://www.garethjames.com/