



OFFERS IN THE REGION OF

£780,000

Lugard Road

London, SE15 2SZ

**GARETH
JAMES**

PROPERTY SUMMARY

We are delighted to present a rare opportunity to acquire a charming three-bedroom terraced home on Lugard Road, ideally situated just moments from the heart of Nunhead, one of London's most sought-after locales.

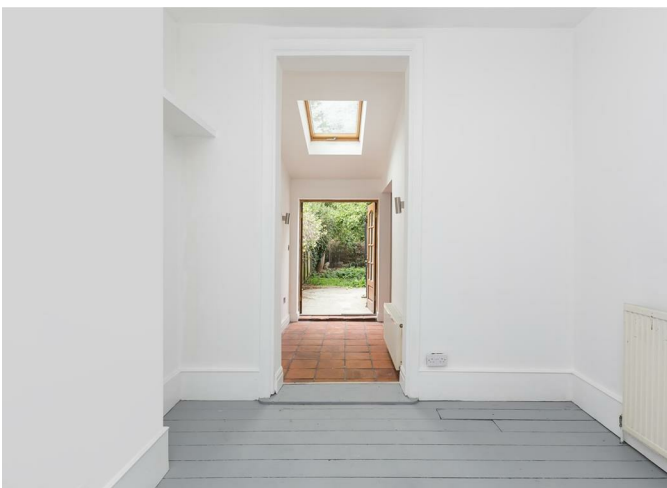
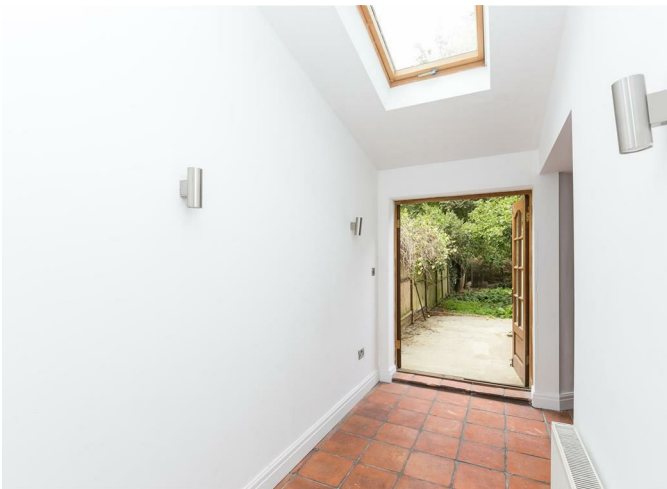
4



1



1





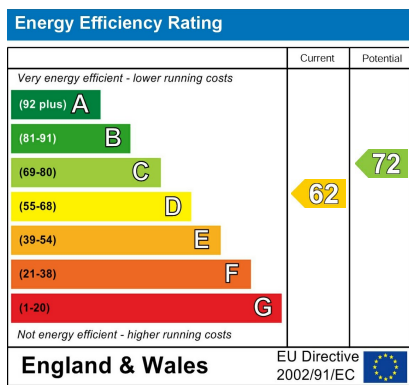


Lugard Road, SE15
 Approximate Gross Internal Area
 Ground Floor = 55.6 sq m / 598 sq ft
 First Floor = 41.4 sq m / 446 sq ft
 Total = 97.0 sq m / 1044 sq ft



This plan is for layout guidance only. Not drawn to scale unless stated. Windows and door openings are approximate. Utmost every care is taken in the preparation of this plan, please check all dimensions, shapes and compass bearings before making any decisions reliant upon them. (ID347919)

4
1
1



Agents Note: Whilst every care has been taken to prepare these particulars, they are for guidance purposes only. All measurements are approximate and are for general guidance purposes only and whilst every care has been taken to ensure their accuracy, they should not be relied upon and potential buyers/tenants are advised to recheck the measurements

GARETH JAMES	OFFICE ADDRESS 129 Bellenden Road London SE15 4QY	OFFICE DETAILS 02077324330 sales@garethjames.com https://www.garethjames.com/