



OFFERS IN THE REGION OF

£499,950

Constance Court

, SE15 4QR

**GARETH
JAMES**

PROPERTY SUMMARY

Enhanced by a walk to everywhere location, tucked in a quiet spot on the beautiful Blenheim Grove, this bright, spacious and trendy two bedroom private garden apartment presents a rare opportunity for modern living in a contemporary complex.

2



1



1

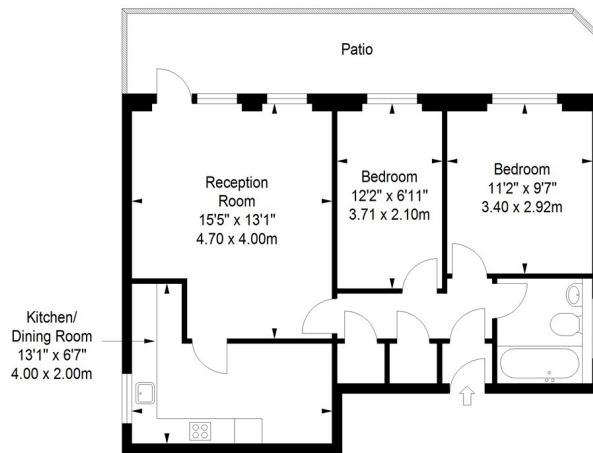






Constance Court

Approximate Gross Internal Area
606 sq ft / 56.32 sq m



Ground Floor

ILLUSTRATION FOR IDENTIFICATION PURPOSES ONLY

ALL MEASUREMENTS ARE MAXIMUM, AND INCLUDE WINDOW BAYS AND WARDROBES WHERE APPLICABLE
THIS PLAN MUST NOT BE REPRODUCED BY ANY OTHER PERSON WITHOUT PERMISSION

2
1
1

Energy Efficiency Rating		
	Current	Potential
Very energy efficient - lower running costs		
(92 plus) A		
(81-91) B		
(69-80) C	72	75
(55-68) D		
(39-54) E		
(21-38) F		
(1-20) G		
Not energy efficient - higher running costs		
England & Wales	EU Directive 2002/91/EC	

Agents Note: Whilst every care has been taken to prepare these particulars, they are for guidance purposes only. All measurements are approximate and are for general guidance purposes only and whilst every care has been taken to ensure their accuracy, they should not be relied upon and potential buyers/tenants are advised to recheck the measurements

**GARETH
JAMES**

OFFICE ADDRESS
129 Bellenden Road
London
SE15 4QY

OFFICE DETAILS
02077324330
sales@garethjames.com
<https://www.garethjames.com/>