



GUIDE PRICE

£350,000

Granville Square

London, SE15 6DX

GARETH
JAMES

PROPERTY SUMMARY

Guide price £350,000 - £375,000

Nestled atop this charming residential development, this two-bedroom purpose-built flat boasts breath-taking sunset vistas from its vantage point on the highest floor.

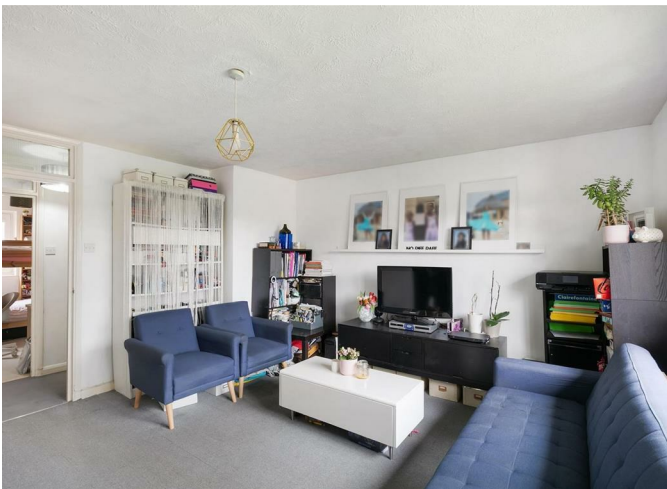
2



1

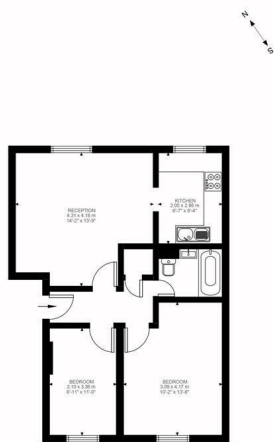


1









Third Floor
562 sq ft

Granville Square, SE15
Approximate Gross Internal Area
52.17 SQ.M / 562 SQ.FT



Illustration for identification purposes only. Not to scale.
Floor Plan Drawn According To RICS Guidelines.

2
1
1

Energy Efficiency Rating		
	Current	Potential
Very energy efficient - lower running costs		
(92 plus) A		
(81-91) B		
(69-80) C		
(55-68) D		
(39-54) E		
(21-38) F		
(1-20) G		
Not energy efficient - higher running costs		
England & Wales	EU Directive 2002/91/EC	

Agents Note: Whilst every care has been taken to prepare these particulars, they are for guidance purposes only. All measurements are approximate and are for general guidance purposes only and whilst every care has been taken to ensure their accuracy, they should not be relied upon and potential buyers/tenants are advised to recheck the measurements

	OFFICE ADDRESS 129 Bellenden Road London SE15 4QY	OFFICE DETAILS 02077324330 sales@garethjames.com https://www.garethjames.com/