



ASKING PRICE

**£530,000**

**49 Copeland Road**  
SE15 3SL

**GARETH**  
**JAMES**

## PROPERTY SUMMARY

This mix of one, two and three bedroom newly built apartments are not to be missed. With quality design and premium finishes throughout in one of SE15's most desirable locations, what more could you want.

2



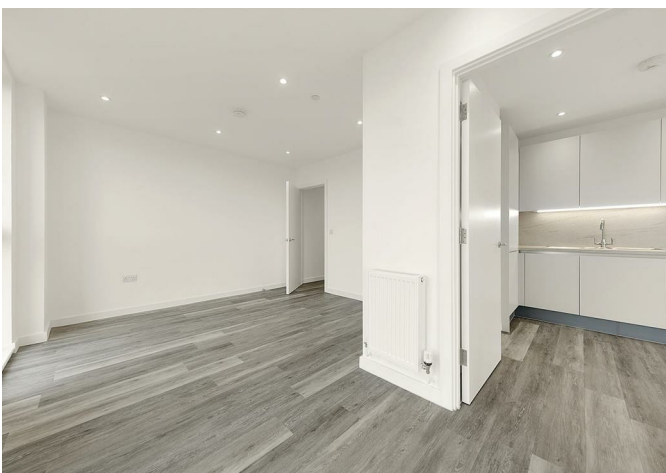
1



1









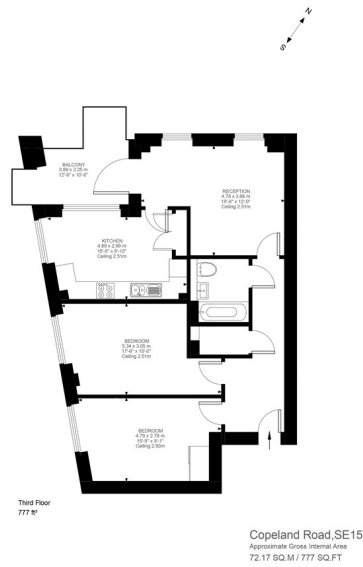


Illustration for identification purposes only. Not to scale.  
Floor Plan Drawn According To NCCP Guidelines.

2

1

1

Energy Efficiency Rating		
	Current	Potential
Very energy efficient - lower running costs		
(92 plus) A		
(81-91) B	84	84
(69-80) C		
(55-68) D		
(39-54) E		
(21-38) F		
(1-20) G		
Not energy efficient - higher running costs		
England & Wales	EU Directive 2002/91/EC	

Agents Note: Whilst every care has been taken to prepare these particulars, they are for guidance purposes only. All measurements are approximate and are for general guidance purposes only and whilst every care has been taken to ensure their accuracy, they should not be relied upon and potential buyers/tenants are advised to recheck the measurements

**GARETH  
JAMES**

OFFICE ADDRESS  
129 Bellenden Road  
London  
SE15 4QY

OFFICE DETAILS  
02077324330  
sales@garethjames.com  
<https://www.garethjames.com/>