



OFFERS OVER

£750,000

Denman Road

London, SE15 5NS

**GARETH
JAMES**

PROPERTY SUMMARY

Spread across two floors, this delightful oversized 1072sqft Victorian conversion offers a coveted share of the freehold and a private southwest-facing garden-an highly desired feature in this sought-after area.

2



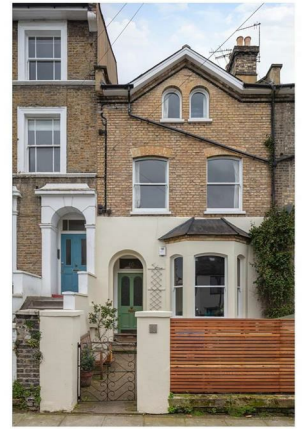
1

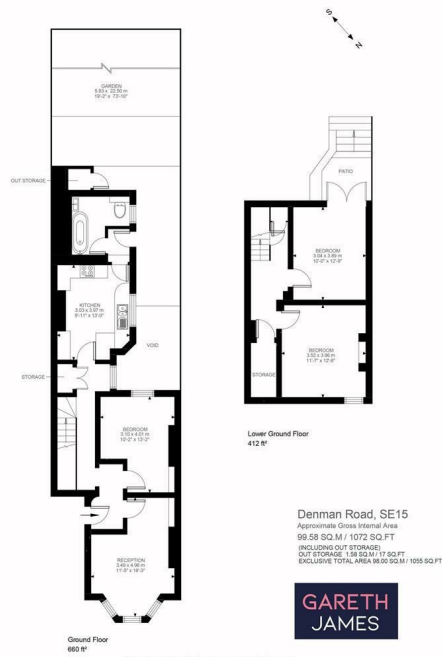


2









2 |

1 |

2 |

Energy Efficiency Rating		
	Current	Potential
Very energy efficient - lower running costs		
(92 plus) A		
(81-91) B		
(69-80) C		
(55-68) D		
(39-54) E		
(21-38) F		
(1-20) G		
Not energy efficient - higher running costs		
England & Wales	EU Directive 2002/91/EC	

Agents Note: Whilst every care has been taken to prepare these particulars, they are for guidance purposes only. All measurements are approximate and are for general guidance purposes only and whilst every care has been taken to ensure their accuracy, they should not be relied upon and potential buyers/tenants are advised to recheck the measurements

GARETH JAMES

OFFICE ADDRESS
 129 Bellenden Road
 London
 SE15 4QY

OFFICE DETAILS
 02077324330
 sales@garethjames.com
 https://www.garethjames.com/