



PRICE GUIDE

**£475,000**

**Hollydale Road**

London, SE15 2AR

**GARETH  
JAMES**

## PROPERTY SUMMARY

This charming 1-bedroom house with its own private garden, nestled behind a gated entrance, offers a perfect blend of comfort and contemporary living in a cosy, open-plan design.

1



1



1











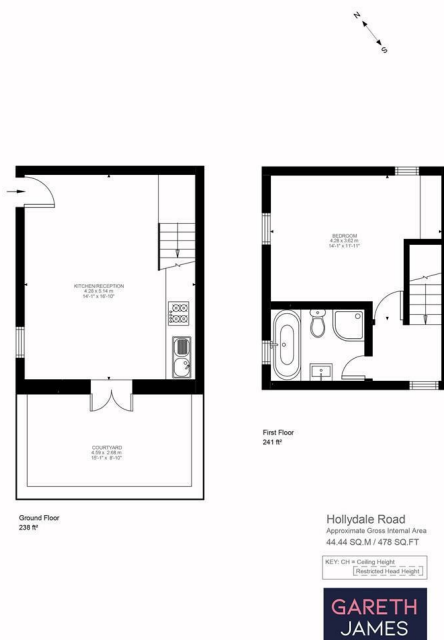
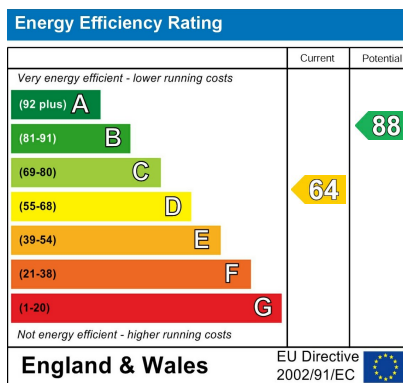


Illustration for identification purposes only. Not to scale.  
Floor Plan Drawn According To RICS Guidelines.



Agents Note: Whilst every care has been taken to prepare these particulars, they are for guidance purposes only. All measurements are approximate and are for general guidance purposes only and whilst every care has been taken to ensure their accuracy, they should not be relied upon and potential buyers/tenants are advised to recheck the measurements

**GARETH  
JAMES**

OFFICE ADDRESS  
129 Bellenden Road  
London  
SE15 4QY

OFFICE DETAILS  
02077324330  
sales@garethjames.com  
<https://www.garethjames.com/>