

ASKING PRICE

£425,000

Building 50

London, SE18 6PP

**GARETH
JAMES**

PROPERTY SUMMARY

Spacious 2 bedroom, 2 bathroom flat is located in the popular Riverside development.

The property is vacant and there is no onward chain.

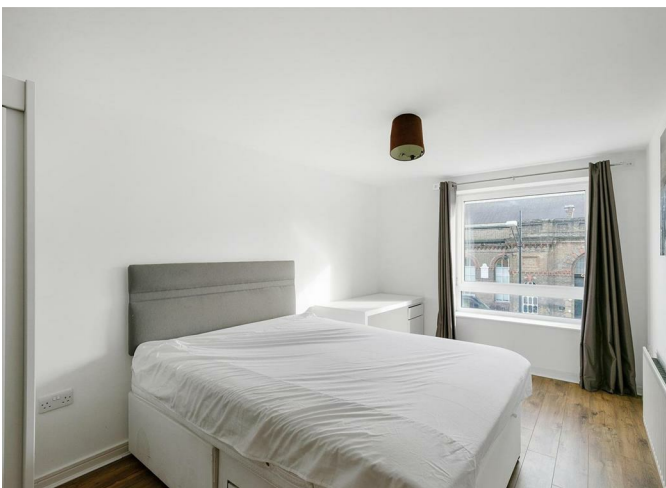
2



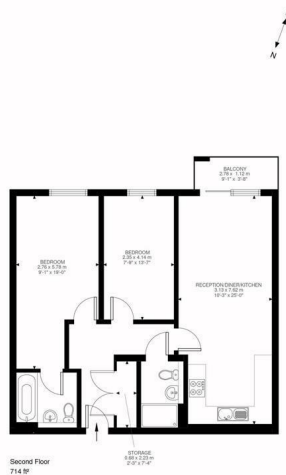
2



1







Argyll Road, SE18
Approximate Gross Internal Area
66.30 SQ.M / 714 SQ.FT

**GARETH
JAMES**

Illustration for identification purposes only. Not to scale.
Floor Plan Drawn According To RICS Guidelines.

2 |

2 |

1 |

Energy Efficiency Rating		
	Current	Potential
Very energy efficient - lower running costs		
(92 plus) A		
(81-91) B	83	83
(69-80) C		
(55-68) D		
(39-54) E		
(21-38) F		
(1-20) G		
Not energy efficient - higher running costs		
England & Wales	EU Directive 2002/91/EC	

Agents Note: Whilst every care has been taken to prepare these particulars, they are for guidance purposes only. All measurements are approximate and are for general guidance purposes only and whilst every care has been taken to ensure their accuracy, they should not be relied upon and potential buyers/tenants are advised to recheck the measurements

**GARETH
JAMES**

OFFICE ADDRESS
129 Bellenden Road
London
SE15 4QY

OFFICE DETAILS
02077324330
sales@garethjames.com
<https://www.garethjames.com/>