



20-25

ASKING PRICE

£525,000

Blenheim Grove

London, SE15 4QW

**GARETH
JAMES**

PROPERTY SUMMARY

Nestled in a prime location that's a true urban gem, this exquisite two-bedroom apartment enjoys the convenience of being tucked away behind the picturesque Blenheim Grove while offering spacious, and trendy living experience within a private modern complex.

2



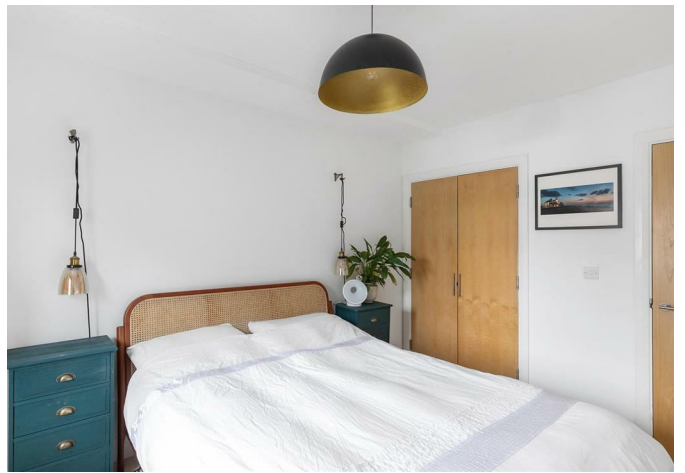
1



1









Blenheim Grove, SE15
Approximate Gross Internal Area
64.38 SQ.M / 693 SQ.FT



Illustration for identification purposes only. Not to scale.
Floor Plan Drawn According To RICS Guidelines.

2
1
1

| Energy Efficiency Rating | | |
|---|----------------------------|-----------|
| | Current | Potential |
| Very energy efficient - lower running costs | | |
| (92 plus) A | | |
| (81-91) B | | |
| (69-80) C | | |
| (55-68) D | | |
| (39-54) E | | |
| (21-38) F | | |
| (1-20) G | | |
| Not energy efficient - higher running costs | | |
| England & Wales | EU Directive 2002/91/EC | |

Agents Note: Whilst every care has been taken to prepare these particulars, they are for guidance purposes only. All measurements are approximate and are for general guidance purposes only and whilst every care has been taken to ensure their accuracy, they should not be relied upon and potential buyers/tenants are advised to recheck the measurements

| | | |
|---------------------|--|---|
| GARETH JAMES | OFFICE ADDRESS | OFFICE DETAILS |
| | 129 Bellenden Road London SE15 4QY | 02077324330 sales@garethjames.com https://www.garethjames.com/ |