



ASKING PRICE

£495,000

Copeland Road
SE15 3SL

GARETH
JAMES

PROPERTY SUMMARY

This mix of one, two and three bedroom newly built apartments are not to be missed. With quality design and premium finishes throughout in one of SE15's most desirable locations, what more could you want.

This apartment consists of two bedrooms, a spacious reception room that leads you out onto a private balcony with incredible views over the south east, a bright kitchen with floor to ceiling windows and a bathroom complete with luxurious tub.

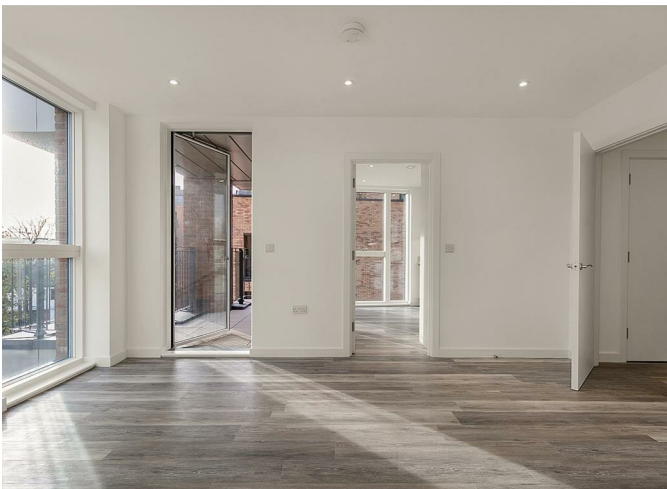
2



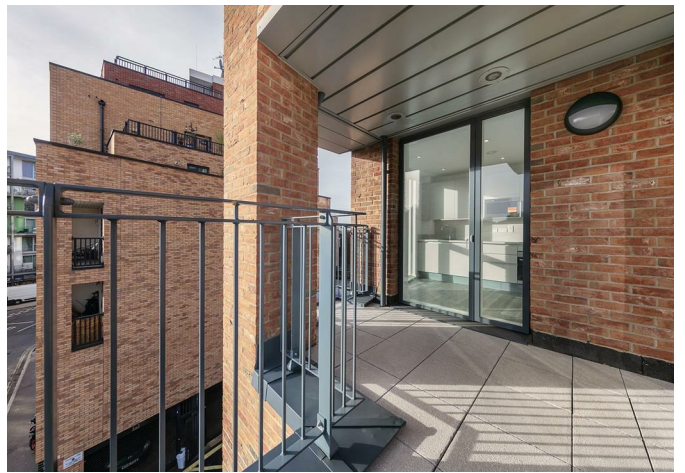
1



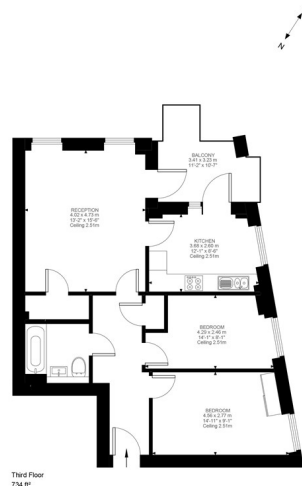
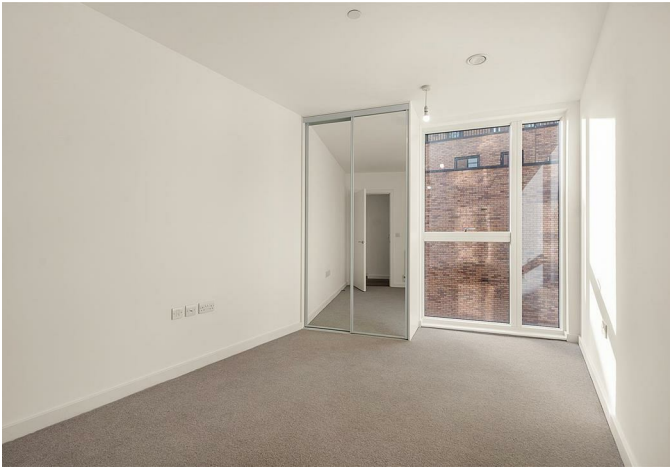
1











Copeland Road, SE15
Approximate Gross Internal Area
65.17 SQ.M / 734 SQ.FT

Illustration for identification purposes only. Not to scale.
Floor Plan Drawn According To NCCP Guidelines.

2

1

1

Energy Efficiency Rating		
	Current	Potential
Very energy efficient - lower running costs		
(92 plus) A		
(81-91) B	84	84
(69-80) C		
(55-68) D		
(39-54) E		
(21-38) F		
(1-20) G		
Not energy efficient - higher running costs		
England & Wales	EU Directive 2002/91/EC	

Agents Note: Whilst every care has been taken to prepare these particulars, they are for guidance purposes only. All measurements are approximate and are for general guidance purposes only and whilst every care has been taken to ensure their accuracy, they should not be relied upon and potential buyers/tenants are advised to recheck the measurements

**GARETH
JAMES**

OFFICE ADDRESS
129 Bellenden Road
London
SE15 4QY

OFFICE DETAILS
02077324330
sales@garethjames.com
<https://www.garethjames.com/>