



TRELISPEN BARN GORRAN PL26 6NR

4 BEDROOM CONVERTED BARN

This beautiful barn conversion is located in the picturesque village of Gorrán. Just minutes from the sea, this lovely country location offers peace and tranquility whilst just a short drive from amenities.

Sympathetically restored, this stunning property boasts 4 bedrooms, a generous living space with cozy log burner and a kitchen/diner perfect for those who like to entertain family and friends. Outside, the property benefits from a charming courtyard garden and parking for approximately 3 cars.

Don't miss this opportunity to own a delightful barn conversion and fall in love with your home in the country

*** NO ONWARD CHAIN *
VIEWING RECOMMENDED**

Key Features

Sympathetically
Converted Barn

Generous Living
Accommodation

4 Bedrooms

Shower Room PLUS
Bathroom

Courtyard Garden

Parking

NO ONWARD CHAIN

About The Location

Gorran is a short walk from Gorran Haven, a charming fishing village located on the south coast and lies within an Area of Outstanding Natural Beauty. Just 2 miles distant is the picturesque coastal village of Mevagissey, with its thriving fishing industry, narrow streets and great community, a popular village with both locals and tourists alike, with its charming narrow streets, delightful restaurants and public houses. The market town of St Austell is a short drive and offers a comprehensive range of amenities including, mainline railway station to London Paddington, Recreation Centre, Library, Cinema, Bowling Alley. Also within a short distance is the captivating Lost Gardens of Heligan and of course the world famous Eden Project.

ACCOMMODATION COMPRISES:

(All sizes approximate)

Entrance Hall

uPVC double glazed entrance door into hall which opens into Kitchen/Diner. Door to shower room. Opening with exposed stone lintel into Lounge/Diner. Porcelain tiled floor.

Shower Room

uPVC double glazed window to the rear elevation. Shower Cubicle with Mira electric shower. Vanity unit with storage and incorporating a low level WC and wash-hand basin. Paneling to dado height with feature tiles. Inset ceiling spotlights. Porcelain tiled floor.

Kitchen/Family Room

18' 8" x 11' 10" (5.7m x 3.6m)

A range of bases and drawer units with worktops over incorporating a sink with drainer. Built-in appliances include; double oven with grill, ceramic hob and black extractor over with curved glass in a smokey effect; dishwasher. Space and plumbing for a washing machine, under counter fridge and freezer. Part-tiled walls. Porcelain tiled floor. Inset ceiling spotlights with a ceiling light in the dining area. uPVC double glazed window overlooking open countryside. uPVC double glazed window overlooking the enclosed courtyard.

Lounge/Diner

27' 3" x 12' 2" (8.3m x 3.7m)

Two uPVC double glazed windows to the front elevation with a further feature porthole window with wood shelving. Corner log burner with brick hearth. Attractive wood sills. Inset ceiling lights. Stairs to the first floor.

First Floor Landing

This space offers more than just a landing with doors to all bedrooms and bathrooms, it offers a tranquil setting for reading or looking up to the stars from the two velux roof lights. Central heating radiator. Storage cupboards housing the Heatrae Sadia and immersion tank, with additional space for use as an airing cupboard.

Bedroom 1

14' 5" x 12' 2" (4.4m x 3.7m) (Irregular Shape)
Retaining the original charm of the barn, there is a uPVC double glazed 'Hobbit' window with deep will decorative sill. Further features include two mirror working in partnership with the uPVC double glazed door with glazed side panel to provide good natural light. This door opens to a quaint seating area with original steps down to the courtyard embracing the features of the original building.

Bedroom 3

10' 10" x 6' 11" (3.3m x 2.1m)

uPVC double-glazed low-level window to the rear with wood sill. Inset ceiling light. Central heating radiator.

Bathroom

White suite comprising bath with shower attachment and vanity unit incorporating a wash-hand basin and low level WC. Porcelain tiled floor. Low level uPVC double glazed window. Heated towel rail. Paneling to dado height with decorative feature tiles.

Bedroom 4

9' 6" x 6' 11" (2.9m x 2.1m)

Velux roof light. Inset ceiling light.

Bedroom 2

12' 2" x 11' 10" (3.7m x 3.6m)

uPVC double glazed window to the side with wood sill. Central heating radiator.

Exterior

Shingle entrance with gate gives access to the enclosed courtyard seating area with Cornish stone wall. The perfect area for your morning cuppa or a glass of wine after a busy day.

Parking

Adjacent the property is parking for 2/3 cars.

Additional Information

EPC 'E'

Council Tax Band 'B'

Services – Mains Electric, Drainage via Newly Installed Treatment Plant

What 3 words - ///umbrella.neckline.loves

Property Age – Pre-1900s

Tenure - Freehold

Viewing

Strictly by appointment with the managing agent Jefferys. If you would like to arrange an appointment to view this property, or require any further information, please contact the office on 01726 73483.

Floor Plans

Please note that floorplans are provided to give an overall impression of the accommodation offered by the property. They are not to be relied upon as true, scaled and precise representation.



Kitchen



Kitchen/Diner



Stairs to First Floor from Dining Area



Lounge with Log Burner



Bedroom 2



Bathroom

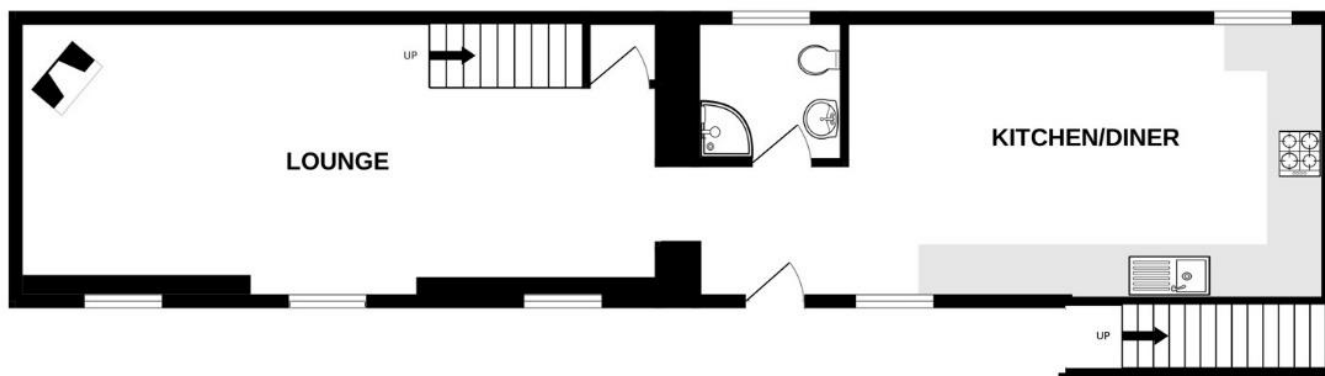


Bedroom 1

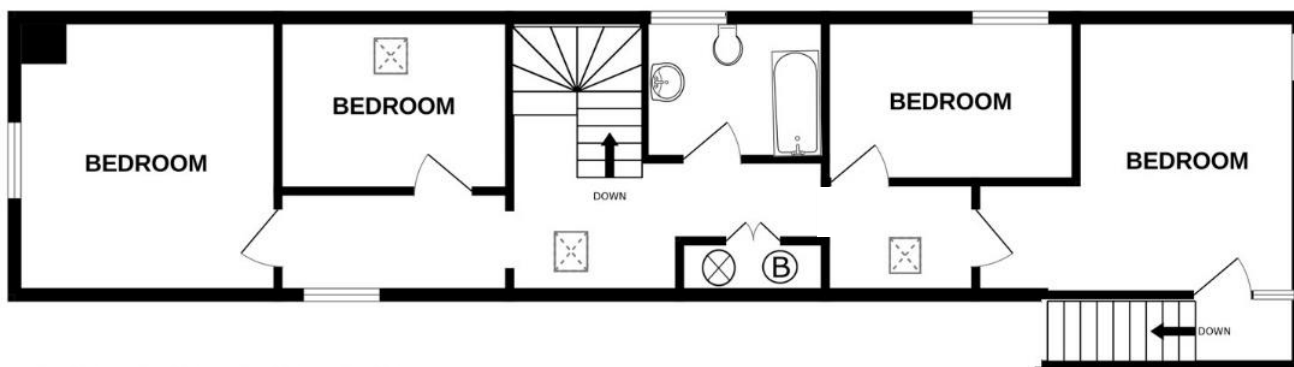


Barn Entrance

GROUND FLOOR



1ST FLOOR



Energy Efficiency Rating		
	Current	Potential
Very energy efficient - lower running costs		
92-100 A		
81-91 B		
69-80 C		
55-68 D		
39-54 E		
21-38 F		
1-20 G		
Not energy efficient - higher running costs		
England & Wales	EU Directive 2002/91/EC	

St Austell
18 Duke St, St Austell
PL25 5PH
01726 73483
staustell@jefferys.uk.com

Lostwithiel
5 Fore St, Lostwithiel
PL22 0BP
01208 872245
lostwithiel@jefferys.uk.com

Liskeard
17 Dean St, Liskeard
PL14 4AB
01579 342400
liskeard@jefferys.uk.com

ESTABLISHED 1865
Jefferys

CONSUMER PROTECTION FROM UNFAIR TRADING REGULATIONS 2008: The Agent has not tested any apparatus, equipment, fixtures and fittings or services and so cannot verify that they are in working order or fit for the purpose. A Buyer is advised to obtain verification from their Solicitor or Surveyor. References to the Tenure of a Property are based on information supplied by the Seller. The Agent has not had sight of the title documents. A Buyer is advised to obtain verification from their Solicitor. Items shown in photographs are not included unless specifically mentioned within the sales particulars. They may however be available by separate negotiation. Buyers must check the availability of any property and make an appointment to view before embarking on any journey to see a property. DATA PROTECTION ACT 1998: Please note that all personal information provided by customers wishing to receive information and/or services from the estate agent and the "Property Sharing Experts" of which Jeffery's is a member for the purpose of providing services associated with the business of an estate agent but specifically excluding mailings or promotions by a third party. If you do not wish your personal information to be used for any of these purposes, please notify your estate agent.