



HUNTERS®

Sales ▪ Lettings ▪ Management

Fountain Street Queensbury, Bradford, West Yorkshire, BD13 2PL

- OF INTEREST TO FIRST TIME BUYERS AND INVESTORS *** WITH NO CHAIN ***
- OPEN PLAN LOUNGE / KITCHEN WITH DINING SPACE
- TWO DOUBLE BEDROOMS
- GAS CENTRAL HEATING
- COUNCIL TAX BAND A

- ACCOMMODATION OVER FOUR FLOORS INCLUDING CELLAR
- MODERN FOUR PIECE BATH AND SHOWER ROOM
- OFFICE / STUDY ROOM
- DOUBLE GLAZING
- EPC RATING GRADE D

Offers Over £110,000

Fountain Street Queensbury, Bradford, West Yorkshire, BD13 2PL

Nestled on the charming Fountain Street in Queensbury, Bradford, this delightful terraced house presents an excellent opportunity for first-time buyers and investors alike. With no chain involved, you can move in or let out without delay.

The property boasts accommodation spread over four floors, providing ample space for comfortable living. The open-plan lounge and kitchen area is perfect for modern living, offering a welcoming environment for both relaxation and entertaining. The dining space seamlessly integrates with the kitchen, making it an ideal spot for family meals or gatherings with friends.

This home features two generously sized double bedrooms, ensuring plenty of room for rest and privacy. Additionally, there is a versatile office or study room, perfect for those who work from home or require extra space for hobbies. The modern four-piece bath and shower room adds a touch of luxury, catering to all your bathing needs.

The property is equipped with gas central heating and double glazing, ensuring warmth and energy efficiency throughout the year. With a Council Tax Band A, this home is not only affordable but also offers a practical living solution.

The EPC rating of Grade D indicates a reasonable level of energy efficiency, making it a sensible choice for those conscious of their environmental impact.

In summary, this terraced house on Fountain Street is a fantastic opportunity for anyone looking to enter the property market or expand their investment portfolio. With its modern amenities and spacious layout, it is sure to attract interest. Don't miss your chance to view this lovely home.





Cellar

GROUND FLOOR

Open Plan Lounge / Kitchen
16'11" x 17'11"

FIRST FLOOR

Landing

Bedroom 2

9'4" x 11'1"

Office / Study

9'4" x 6'3"

Bath & Shower Room

7'1" x 9'10"

SECOND FLOOR

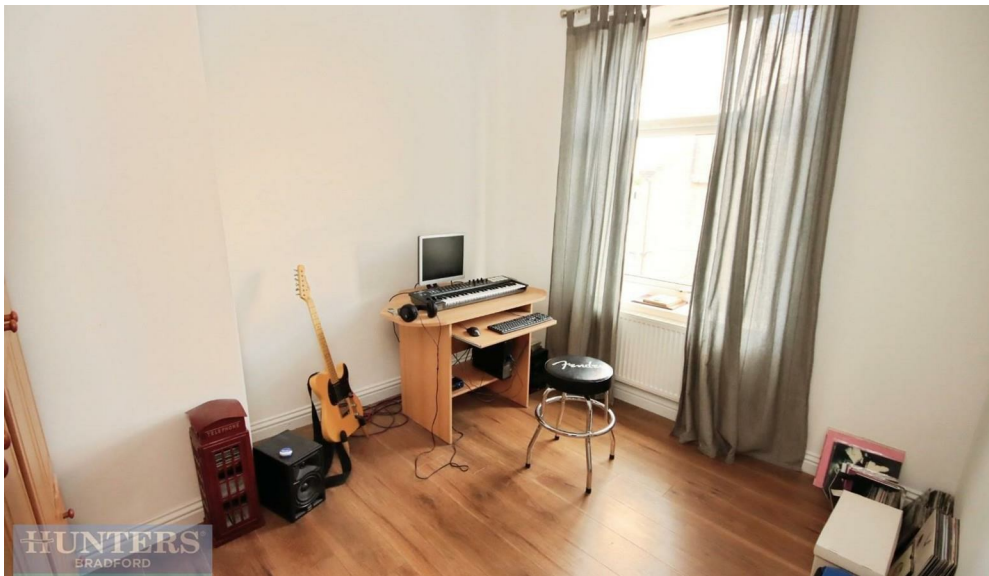
Bedroom 1

16'9" x 17'7"

EXTERNAL

Front Yard

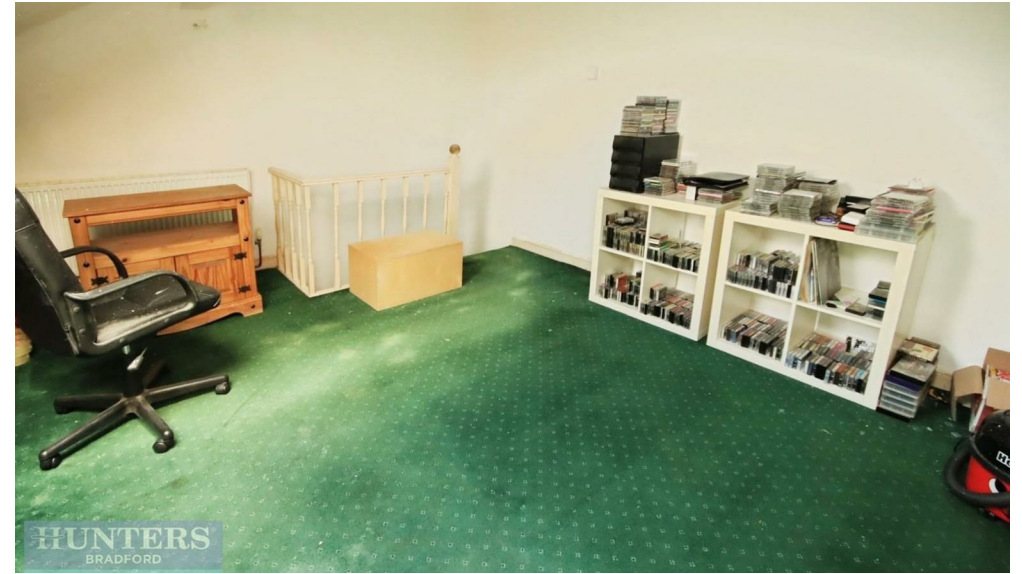




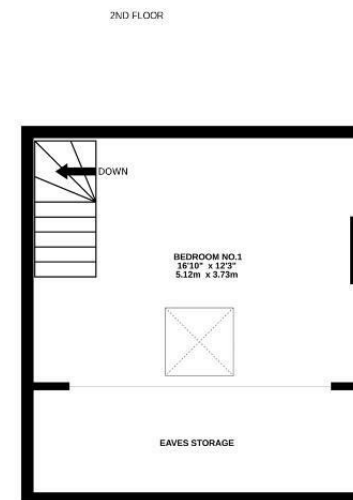
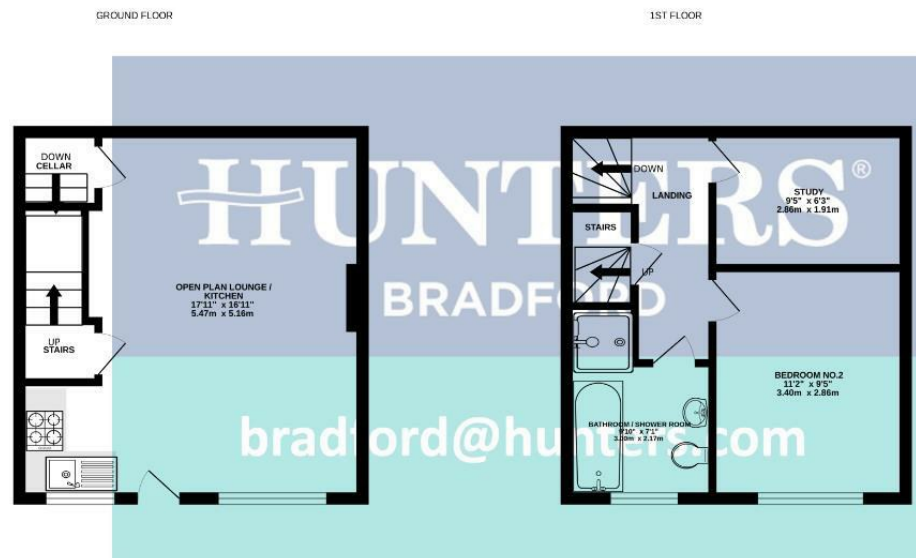
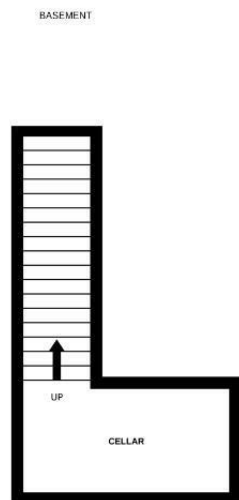
These particulars are intended to give a fair and reliable description of the property but no responsibility for any inaccuracy or error can be accepted and do not constitute an offer or contract. We have not tested any services or appliances (including central heating if fitted) referred to in these particulars and the purchasers are advised to satisfy themselves as to the working order and condition. If a property is unoccupied at any time there may be reconnection charges for any switched off/disconnected or drained services or appliances - All measurements are approximate. If you are thinking of selling your home or just curious to discover the value of your property, Hunters would be pleased to provide free, no obligation sales and marketing advice. Even if your home is outside the area covered by our local offices we can arrange a Market Appraisal through our national network of Hunters estate agents.



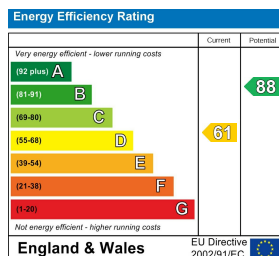








Whilst every attempt has been made to ensure the accuracy of the floorplan contained here, measurements of doors, windows, rooms and any other items are approximate and no responsibility is taken for any error, omission or mis-statement. This plan is for illustrative purposes only and should be used as such by any prospective purchaser. The services, systems and appliances shown have not been tested and no guarantee as to their operability or efficiency can be given.
Made with Metropix ©2025



Viewing Arrangements

Strictly by prior appointment only through the agent Hunters Hunters Bradford -
01274 393955 <https://www.hunters.com>



HUNTERS
BRADFORD