

Grasleigh Avenue, Allerton, Bradford, West Yorkshire, BD15 9AR

- CHARMING THREE BEDROOM BUNGALOW
- MODERN KITCHEN
- VERSATILE ROOMS
- WELL - CONNECTED TRANSPORT LINKS
- POPULAR LOCATION
- ONE RECEPTION ROOM
- MODERN BATHROOM
- BLOCK-PAVED DRIVEWAY & GARAGE
- NEARBY SCHOOLS FOR FAMILIES
- COUNCIL TAX BAND C - EPC RATING GRADE D

Offers In The Region Of £200,000



Grasleigh Avenue, Allerton, Bradford, West Yorkshire, BD15 9AR

DESCRIPTION

We are delighted to present this charming semi-detached bungalow, now available for sale. The property is in good condition, ready for its new owners to move in and add their personal touch.

This home boasts a spacious reception room, providing ample space for relaxation and socialising. The well-equipped kitchen is ready to cater to your culinary needs while the three comfortable bedrooms offer the peaceful retreat that you look for in a home. If you do not require a third bedroom then this could be a dining room. The property also includes a modern bathroom, completing the essential facilities of the house.

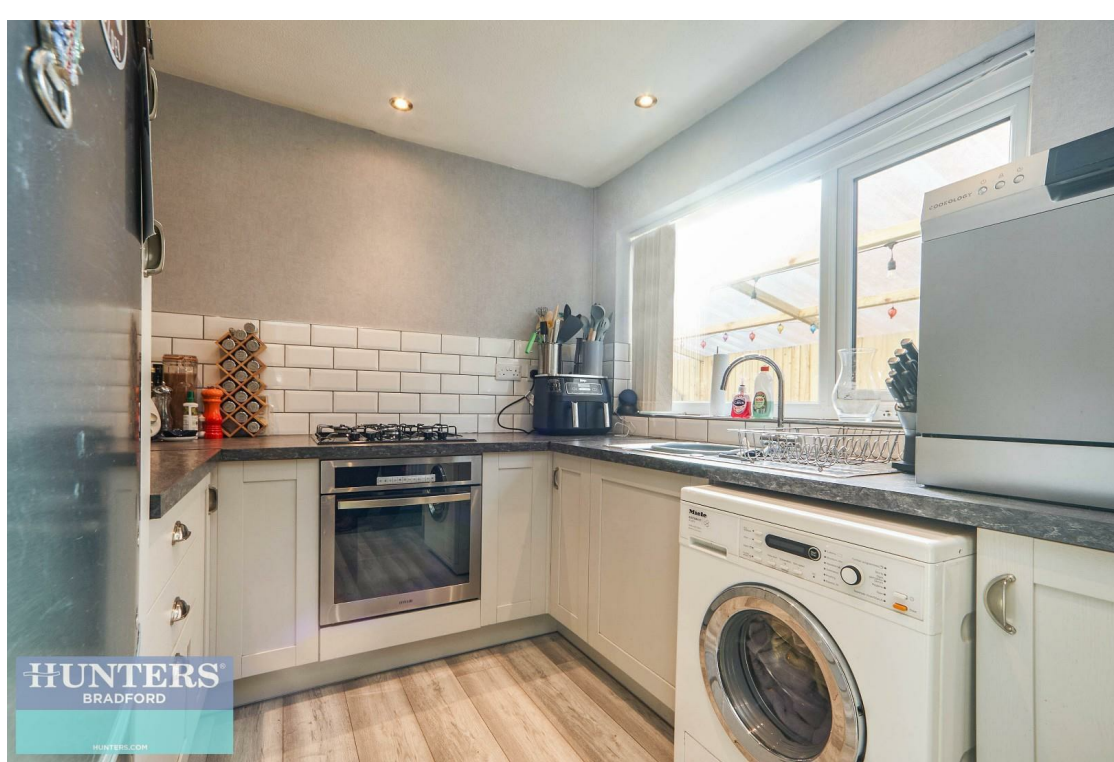
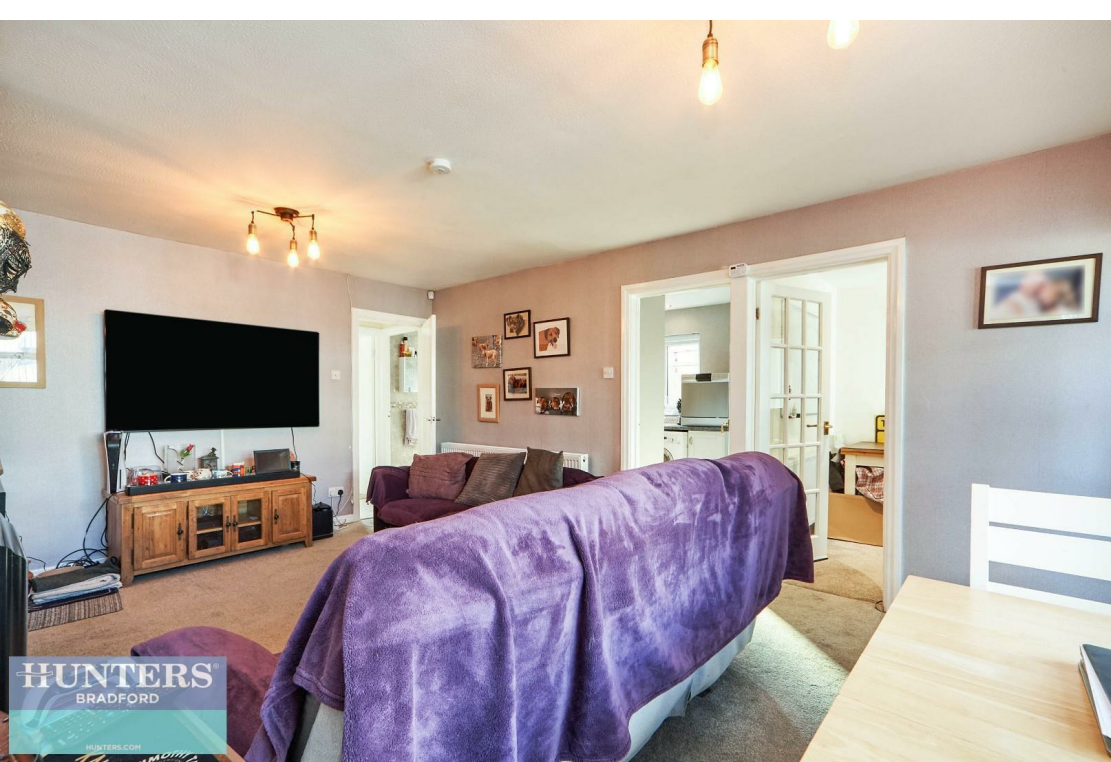
One of the unique features of this property is its versatile rooms, which can be used for different purposes depending on your needs. The exterior is just as impressive with its block-paved driveway providing ample off-road parking.

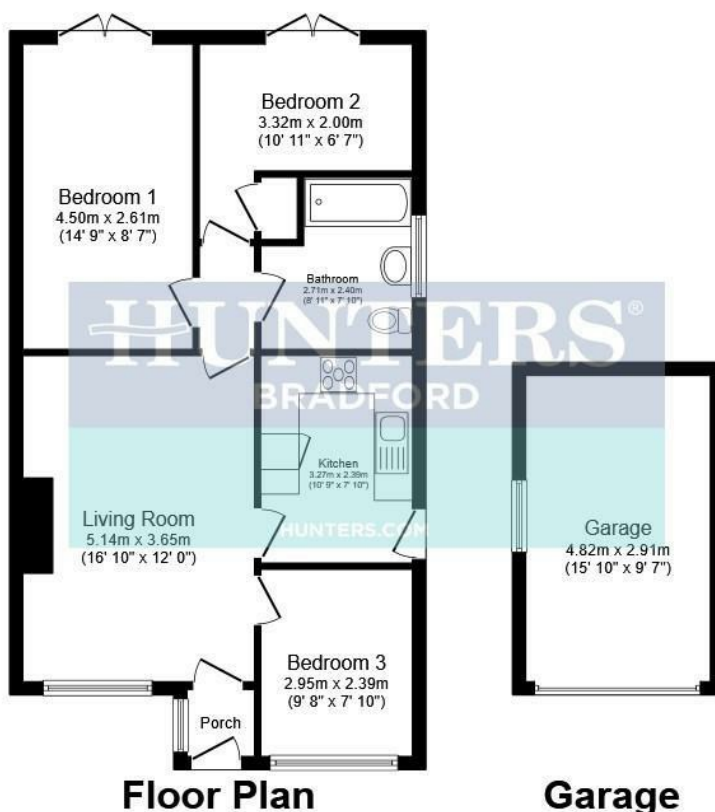
The location of the property is indeed a highlight. It's well-connected with public transport links, making your daily commute a breeze. Schools in the vicinity make it an ideal choice for families. Local amenities are within easy reach, ensuring all your daily needs are catered for. Moreover, for those who enjoy outdoor activities, there are walking and cycling routes nearby.

The bungalow is energy-efficient with an EPC rating of D, and falls under the Council Tax Band C

Overall, this property is an excellent choice for first-time buyers or families seeking a home in a sought-after location. Don't miss out on this wonderful opportunity. Arrange a viewing today.







Total floor area 79.9 sq.m. (860 sq.ft.) approx

This floor plan is for illustrative purposes only. It is not drawn to scale. Any measurements, floor areas (including any total floor area), openings and orientation are approximate. No details are guaranteed, they cannot be relied upon for any purpose and they do not form part of any agreement. No liability is taken for any error, omission or misstatement. A party must rely upon its own inspection(s). Powered by www.focalagent.com

Viewings

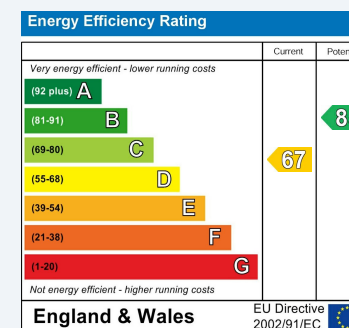
Please contact bradford@hunters.com, if you wish to arrange a viewing appointment for this property or require further information.

Valuations

For a valuation of your property, please email the team with your property details, contact information and the times you are available.

ENERGY PERFORMANCE CERTIFICATE

The energy efficiency rating is a measure of the overall efficacy of a home. The higher the rating the more energy efficient the home is and the lower the fuel bills will be.



These particulars are intended to give a fair and reliable description of the property but no responsibility for any inaccuracy or error can be accepted and do not constitute an offer or contract. We have not tested any services or appliances (including central heating if fitted) referred to in these particulars and the purchasers are advised to satisfy themselves as to the working order and condition. If a property is unoccupied at any time there may be reconnection charges for any switched off/disconnected or drained services or appliances - All measurements are approximate.

THINKING OF SELLING? If you are thinking of selling your home or just curious to discover the value of your property, Hunters would be pleased to provide free, no obligation sales and marketing advice. Even if your home is outside the area covered by our local offices we can arrange a Market Appraisal through our national network of Hunters estate agents.