



Beck Bridge Lane, Allerton, Bradford, West Yorkshire, BD15 8HE

- THREE BEDROOM SEMI-DETACHED FAMILY HOME
- STUNNING REAR VIEWS ACROSS THE AREA
- REAR PATIO GARDEN WITH SECOND TIER
- SECOND FLOOR BEDROOM WITH EN-SUITE
- EPC RATING GRADE B
- MODERN INTEGRATED KITCHEN
- GROUND FLOOR WC
- STUDY / OFFICE
- CLOSE TO LOCAL SCHOOLS / AMENITIES
- COUNCIL TAX BAND C

Offers In The Region Of £230,000



Beck Bridge Lane, Allerton, Bradford, West Yorkshire, BD15 8HE

DESCRIPTION

Welcome to this charming three-bedroom, three-bathroom three story semi-detached house located in the picturesque Beck Bridge Lane, Allerton, Bradford.

As you step into this lovely property, you are greeted by a cosy living room featuring a traditional wood burner, perfect for those chilly British evenings. The property boasts a spacious layout with one reception room, ideal for entertaining guests or simply relaxing with your family.

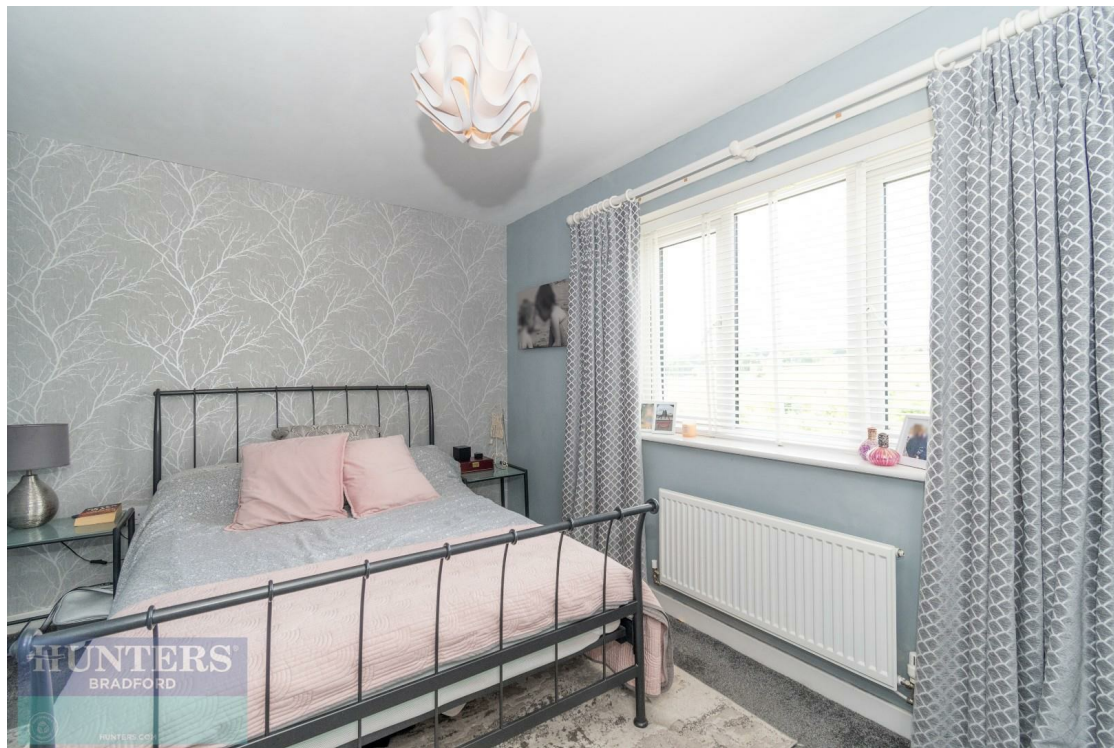
This three-storey home offers ample space for a growing family, with the master suite conveniently located on the second floor for added privacy and tranquillity. Each of the three bedrooms is well-appointed, providing comfort and style throughout.

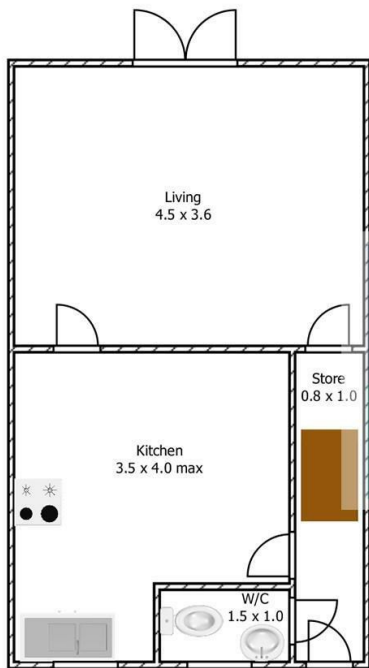
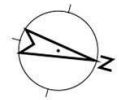
Located in the heart of West Yorkshire, this property offers easy access to local amenities and schools, making it a perfect choice for families looking for convenience and a sense of community.

With parking available for one vehicle, you can say goodbye to the hassle of searching for a parking spot after a long day at work.

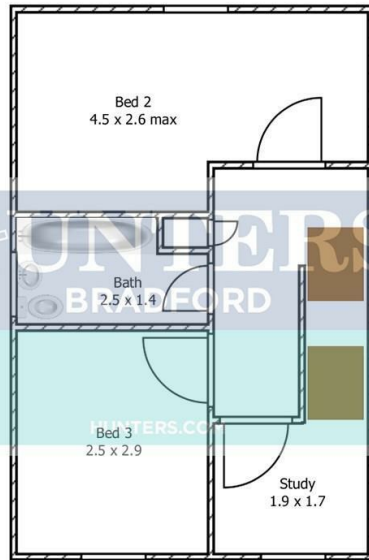
Don't miss the opportunity to make this house your home and enjoy the best of British living in this beautiful semi-detached property. Contact us today to arrange a viewing and take the first step towards owning your dream home in Allerton.



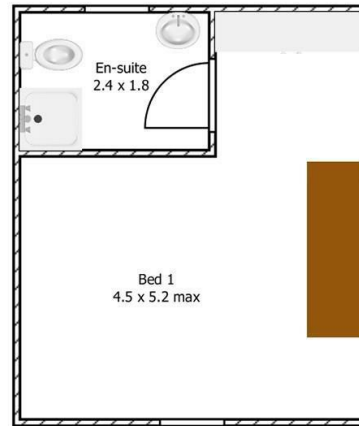




GROUND FLOOR



FIRST FLOOR



SECOND FLOOR

Whilst every attempt has been made to ensure the accuracy of the floorplan contained here, measurements of rooms and scaling of doors/windows/utilities/appliances/fittings are approximate and no responsibility will be taken for any error, omission, or misrepresentation. This plan is for illustrative purposes only and should be used as such by any prospective buyer.

Viewings

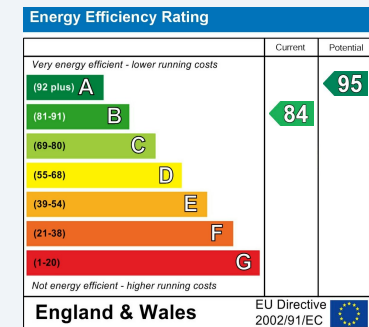
Please contact bradford@hunters.com, if you wish to arrange a viewing appointment for this property or require further information.

Valuations

For a valuation of your property, please email the team with your property details, contact information and the times you are available.

ENERGY PERFORMANCE CERTIFICATE

The energy efficiency rating is a measure of the overall efficacy of a home. The higher the rating the more energy efficient the home is and the lower the fuel bills will be.



These particulars are intended to give a fair and reliable description of the property but no responsibility for any inaccuracy or error can be accepted and do not constitute an offer or contract. We have not tested any services or appliances (including central heating if fitted) referred to in these particulars and the purchasers are advised to satisfy themselves as to the working order and condition. If a property is unoccupied at any time there may be reconnection charges for any switched off/disconnected or drained services or appliances - All measurements are approximate.

THINKING OF SELLING? If you are thinking of selling your home or just curious to discover the value of your property, Hunters would be pleased to provide free, no obligation sales and marketing advice. Even if your home is outside the area covered by our local offices we can arrange a Market Appraisal through our national network of Hunters estate agents.

