

richard  
james



***22 Bushton Close***

Badbury Park, Swindon, SN3 6FD

Offers Over  
**£370,000**





# 22 Bushton Close

Badbury Park, Swindon, SN3 6FD

Freehold | EPC Rating - B

 3
  2
  2



Located in the highly desirable Badbury Park development, this beautifully presented three bedroom detached home offers modern living in a peaceful, no-through road setting. Ideal for families and professionals, the property benefits from a fantastic location within walking distance of Great Western Hospital and easy access to the A419 and M4.

**Izzy Bowles**  
Partner

**01793 311 039**  
**07460 922 221**

isobelbowles@richardjames.uk



Scan here



Utility







Inside, the property is thoughtfully laid out with a spacious kitchen diner to the rear perfect for everyday dining and entertaining. French doors to the rear garden floods this room with natural light. There is also a useful utility room off of the kitchen. To the front of there is a generous living room and a downstairs cloakroom.



En-suite





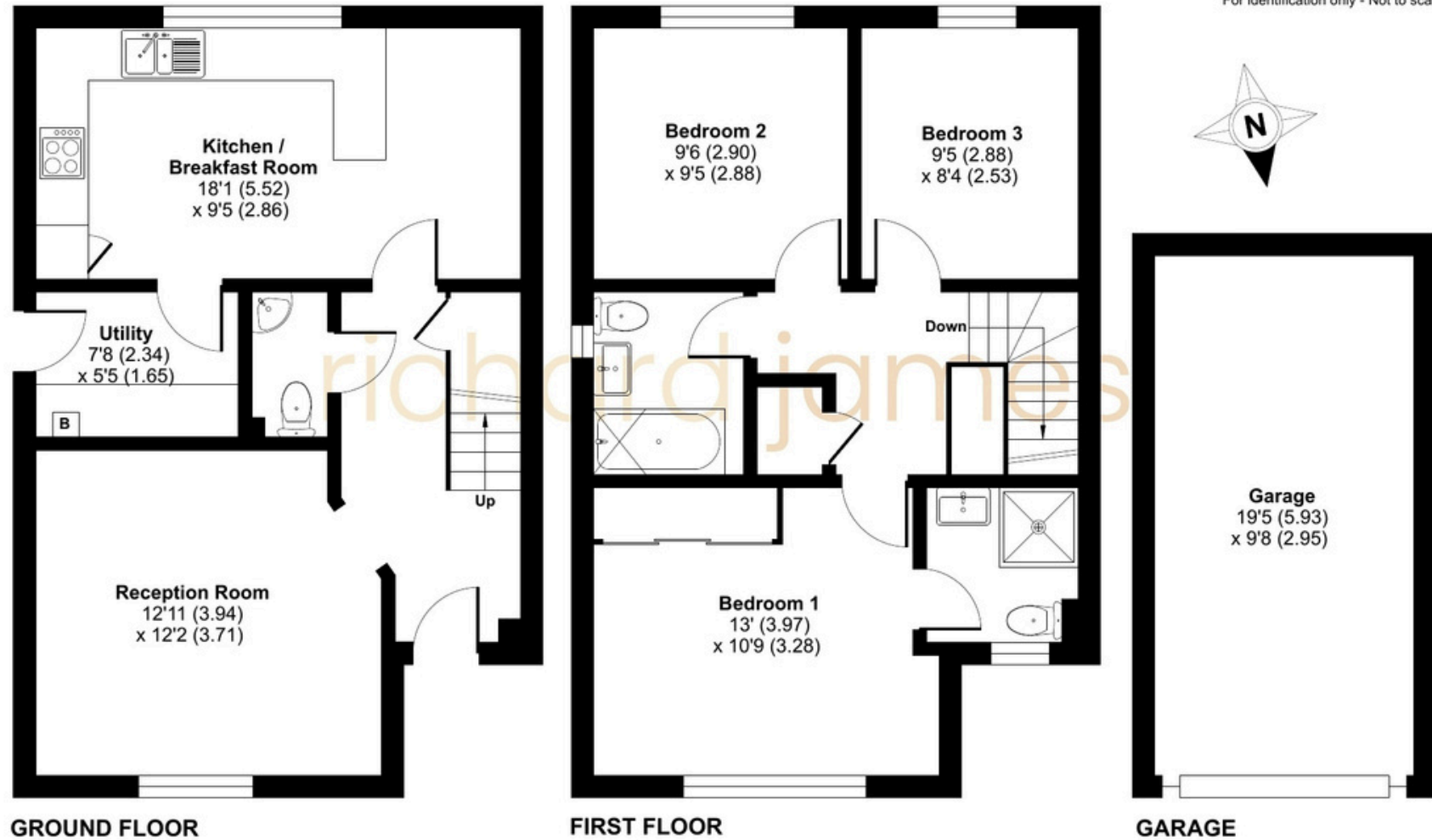


Upstairs, you'll find three well-proportioned bedrooms including a generous master bedroom, boasting an en-suite shower room, alongside a family bathroom and ample storage.

Outside, the property continues to impress with a south-facing rear garden, ideal for relaxing and enjoying the sunshine. A detached garage and driveway parking provide convenient and secure off-street parking.



Approximate Area = 960 sq ft / 89.1 sq m  
Garage = 188 sq ft / 17.4 sq m  
Total = 1148 sq ft / 106.5 sq m  
For identification only - Not to scale



Floor plan produced in accordance with RICS Property Measurement 2nd Edition, Incorporating International Property Measurement Standards (IPMS2 Residential). © nichecom 2025. Produced for Richard James Estate Agents Ltd. REF: 1293731

**01793 311 039**

isobelbowles@richardjames.uk

**richardjames.uk**

   @rjestateagent