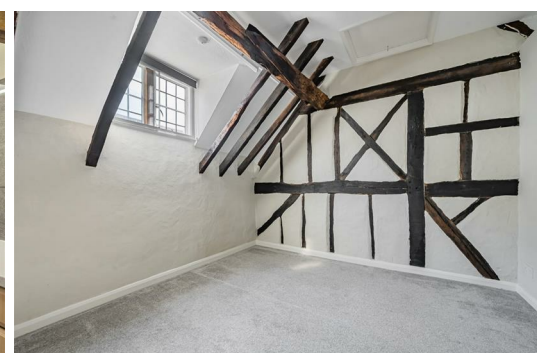




HARDINGS

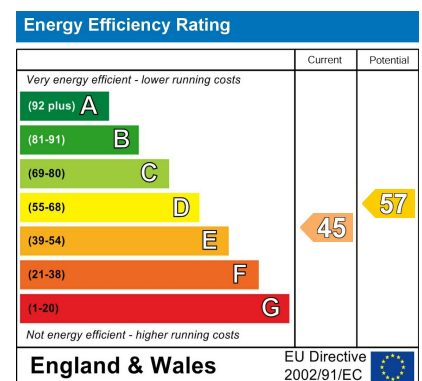


Peascod Street
Price Guide £425,000



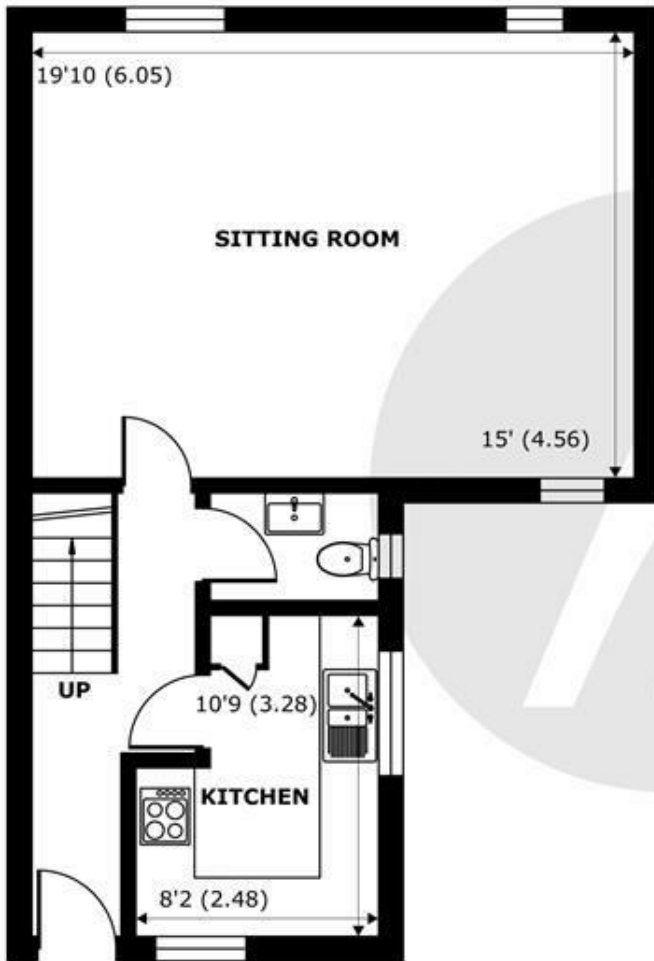
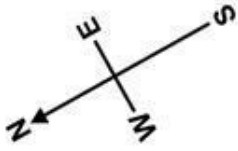


A beautiful Grade II listed 3 bedroom maisonette located in the heart of Windsor town centre. Offering approximately 1000 square feet of internal space, this period home features a spacious sitting room, modern bathroom and a convenient downstairs cloakroom showcased with an abundance of original period features throughout. Benefitting from a 'tucked away position' the property offers both privacy and convenience to take advantage of Windsor's shops, restaurants, mainline rail links (Paddington & London Waterloo). Additional highlights include a long lease and no onward chain, making it an ideal opportunity for those seeking a historic home in a prime location.

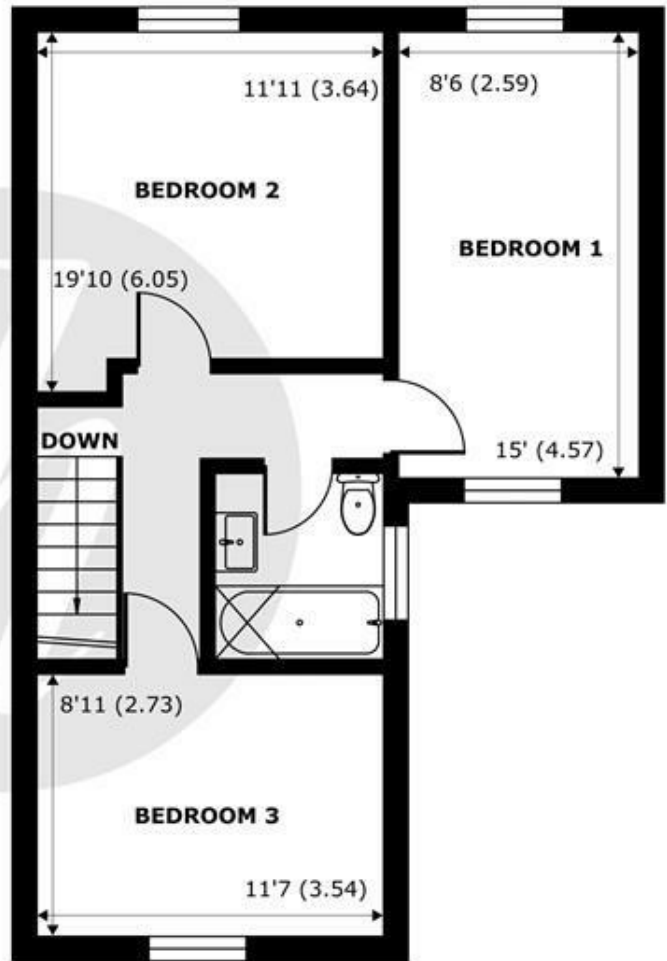


Features

- 3 Bedroom Period Maisonette
- Spacious Sitting Room
- Approximately 1000 sq.ft of Internal Space
- Beautiful Period Features
- Grade 2 Listed
- Windsor Town Centre
- Bathroom and Downstairs Cloakroom
- Own Front Door
- 999 Year Lease
- No Onward Chain



GROUND FLOOR
abt 566 SQFT (52.5 SQMT)



FIRST FLOOR
abt 566 SQFT (52.5 SQMT)

Queen Annes Court, Peascod Street, Windsor, SL4

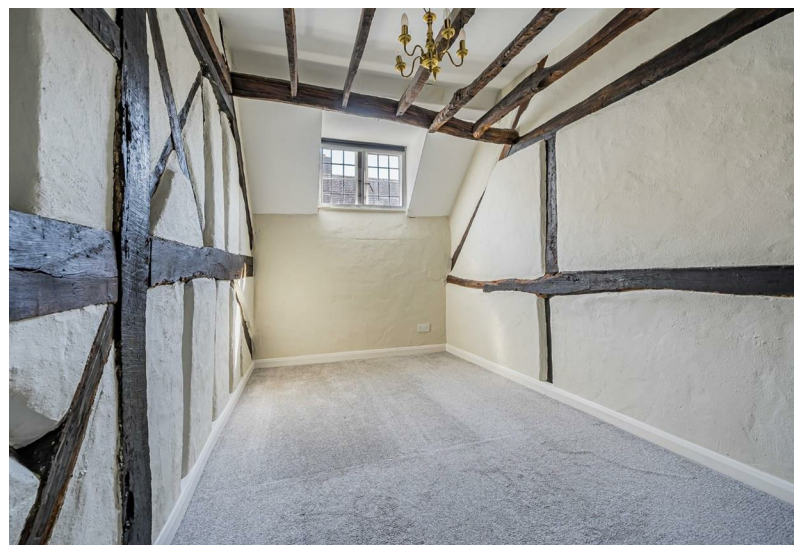
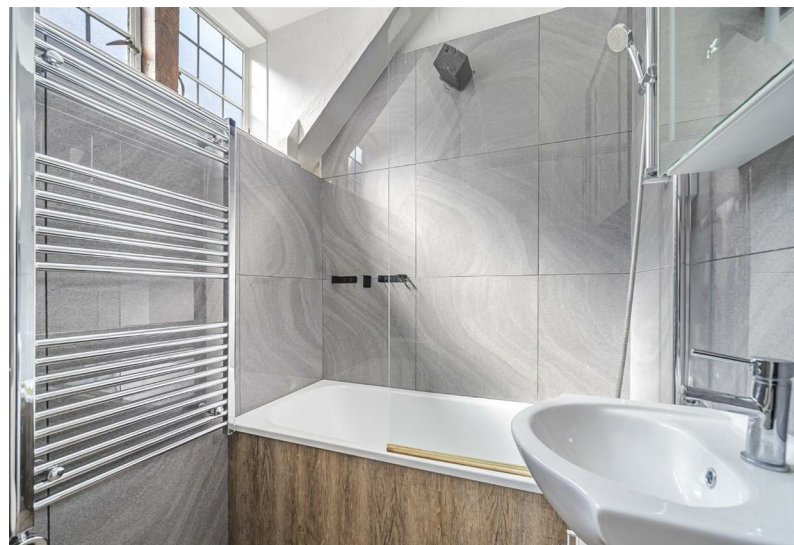
Approximate Internal Area = 960 sq ft / 89.1 sq m
Approximate External Area = 1132 sq ft / 105.1 sq m

For identification only - Not to scale



Floor plan produced in accordance with RICS Property Measurement Standards incorporating International Property Measurement Standards (IPMS2 Residential). © nichecom 2024. Produced for Hardings. REF: 1182685





11 High Street, Windsor, Berkshire, SL4 1LD,
T: 01753 833 118 | E: info@hardings.co.uk
www.hardings.co.uk

