



HARDINGS




Hermitage Lane
Price Guide £415,000





A stylish 2 bedroom top floor apartment set in a gated development just moments' away from Windsor Great Park. Offering light and spacious open-plan living accommodation, the property is just a short walk to local amenities and further benefits include, two secure allocated parking spaces and a lift.

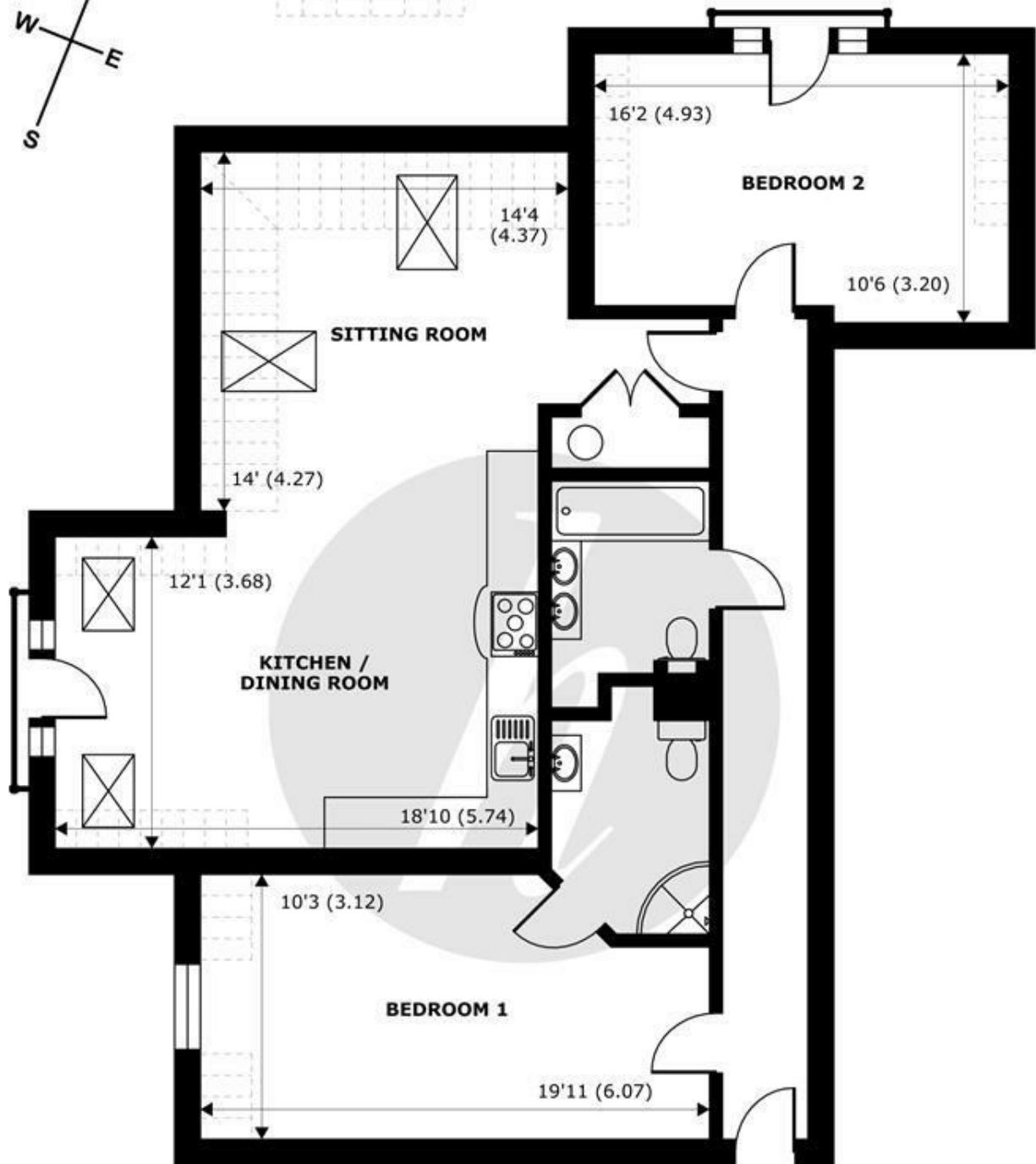
| Energy Efficiency Rating | | |
|--|---|-----------|
| | Current | Potential |
| <i>Very energy efficient - lower running costs</i> | | |
| (92 plus) A | | |
| (81-91) B | 79 | 79 |
| (69-80) C | | |
| (55-68) D | | |
| (39-54) E | | |
| (21-38) F | | |
| (1-20) G | | |
| <i>Not energy efficient - higher running costs</i> | | |
| England & Wales | EU Directive 2002/91/EC  | |

Features

- Gated Development
- Modern Integrated Kitchen with Underfloor Heating
- Two Double Bedrooms
- Lift Access
- Share of Freehold
- An Underground Allocated Parking Space
- Principle Bedroom with En-Suite
- Open Plan Living
- Close to Local Shops
- Moments away from Windsor Great Park



Denotes restricted head height



SECOND FLOOR
abt 1094 SQFT (101.6 SQMT)

Hermitage Lane, Windsor, SL4

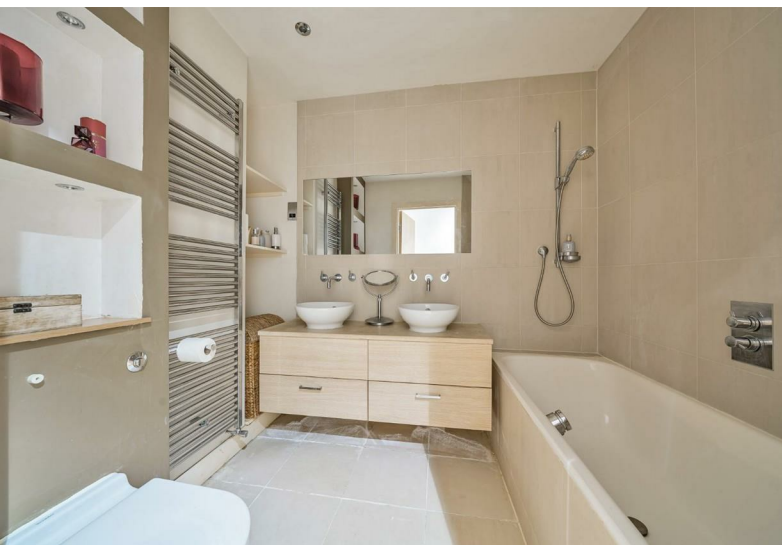
Approximate Internal Area = 959 sq ft / 89.1 sq m
Approximate External Area = 1257 sq ft / 116.7 sq m
Limited Use Area(s) = 135 sq ft / 12.5 sq m

For identification only - Not to scale



Floor plan produced in accordance with RICS Property Measurement Standards incorporating International Property Measurement Standards (IPMS2 Residential). © nichecom 2023. Produced for Hardings. REF: 1068894.





11 High Street, Windsor, Berkshire, SL4 1LD,
T: 01753 833 118 | E: info@hardings.co.uk
www.hardings.co.uk

