



HARDINGS



Bolton Road
Asking Price £1,300,000





This impressive detached family home has been recently renovated and extended throughout, offering stylish and versatile accommodation ideally suited to modern family living.

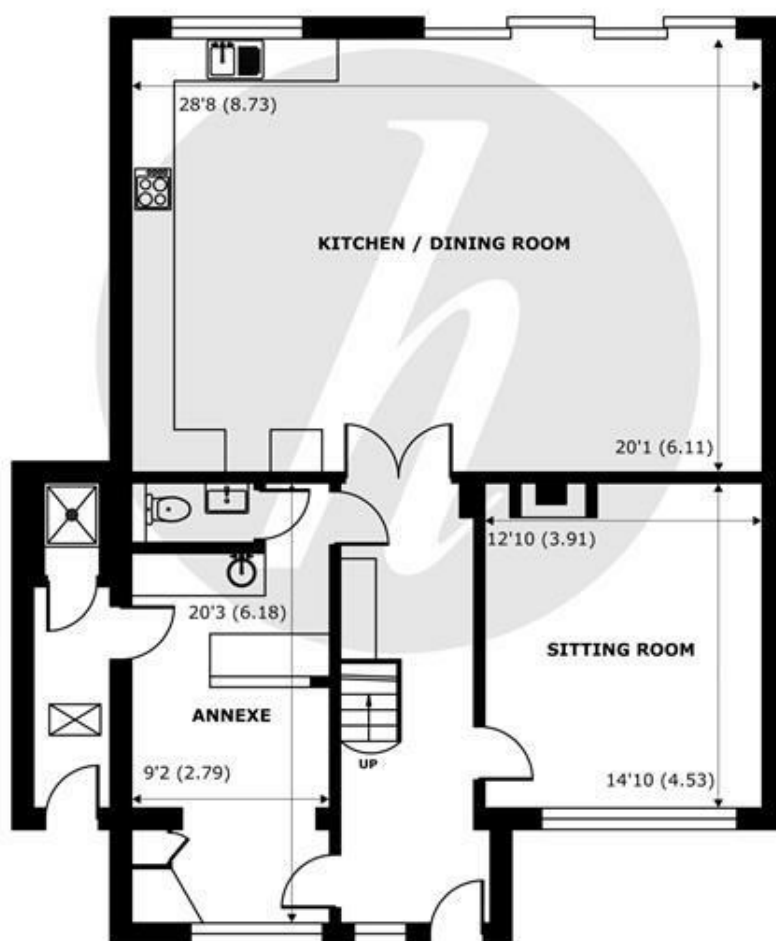
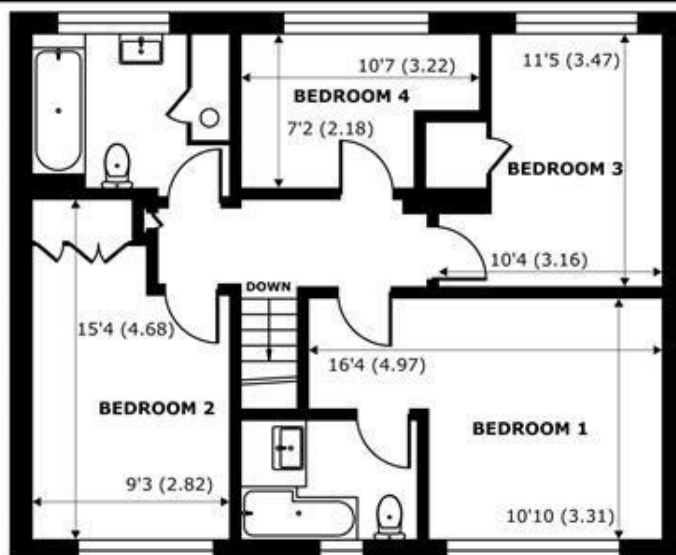
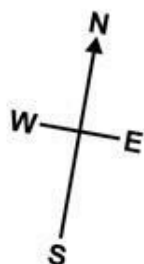
The heart of the home is a spacious open-plan living area, complemented by a separate front reception room ideal as a snug, formal sitting room, home office or currently being used as a home cinema room. An annexe provides excellent flexibility, whether for guests, multigenerational living, independent working or a lucrative short term rental income via Air B&B. Upstairs, the property offers four well-proportioned bedrooms served by two contemporary bathrooms, all finished in a modern style.

Externally, the home truly stands out with its beautifully landscaped, private garden, featuring a plunge pool and multiple areas for relaxing and entertaining. Side access adds everyday practicality, while to the front there is off-street parking for multiple vehicles. The property also benefits from planning permission to extend further, offering future potential if desired.

Energy Efficiency Rating		
	Current	Potential
Very energy efficient - lower running costs		
(92 plus) A		
(81-91) B		
(69-80) C		
(55-68) D		
(39-54) E		
(21-38) F		
(1-20) G		
Not energy efficient - higher running costs		
	43	60
England & Wales		EU Directive 2002/91/EC

Features

- Detached Family House
- Planning Permission to Extend Further
- Further Front Reception Room
- Four Bedrooms
- Large Private Garden
- Recently Renovated & Extended Throughout
- Open Plan Living
- Annexe
- Two Bathrooms
- Off Street Parking for Multiple Cars



Bolton Road, Windsor, SL4

Approximate Internal Area = 1605 sq ft / 149.1 sq m

Approximate External Area = 1831 sq ft / 170.1 sq m

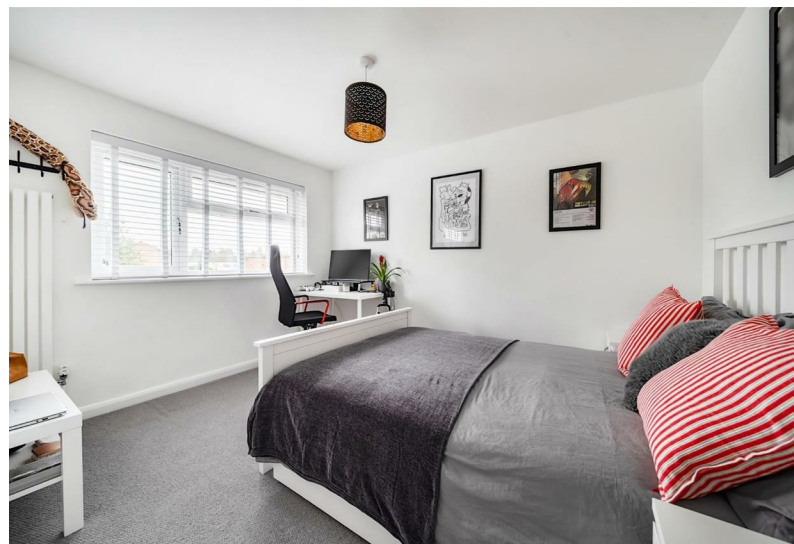
Annexe = 254 sq ft / 23.5 sq m

For identification only - Not to scale



Floor plan produced in accordance with RICS Property Measurement 2nd Edition, Incorporating International Property Measurement Standards (IPMS2 Residential). © nichecom 2026. Produced for Hardings. REF: 1394807





11 High Street, Windsor, Berkshire, SL4 1LD,
T: 01753 833 118 | E: info@hardings.co.uk
www.hardings.co.uk

