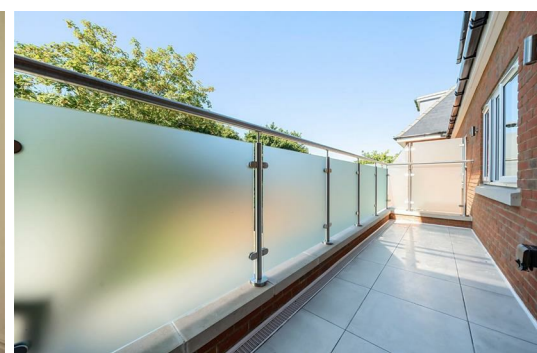




HARDINGS



Vansittart Road
£4,500 PCM





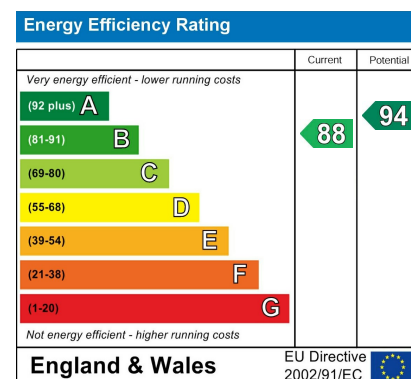
Forming part of a terrace of four properties, this is a luxurious four-bedroom mid terraced townhouse, with parking for 2 cars, built by luxury builders 'The BellView Group'. Located on a quiet residential road just a short walk to Windsor town centre, the property encompasses stylish and beautifully appointed accommodation throughout.

On the ground floor, there is an open-plan kitchen/dining room blending seamlessly into a spacious reception area replete with high ceilings and bi-fold doors opening onto a private west-facing private garden. Further benefits include a separate utility room with a cloakroom.

The principal bedroom, which is located on the first floor, enjoys a private terrace, ample storage and en-suite bathroom. There are a further three double bedrooms all offered with en-suite bathrooms.

The property is ideally located for the mainline British Rail links to London (Waterloo & Paddington), M25 & M40, excellent schools and Heathrow Airport.

Offered Unfurnished.

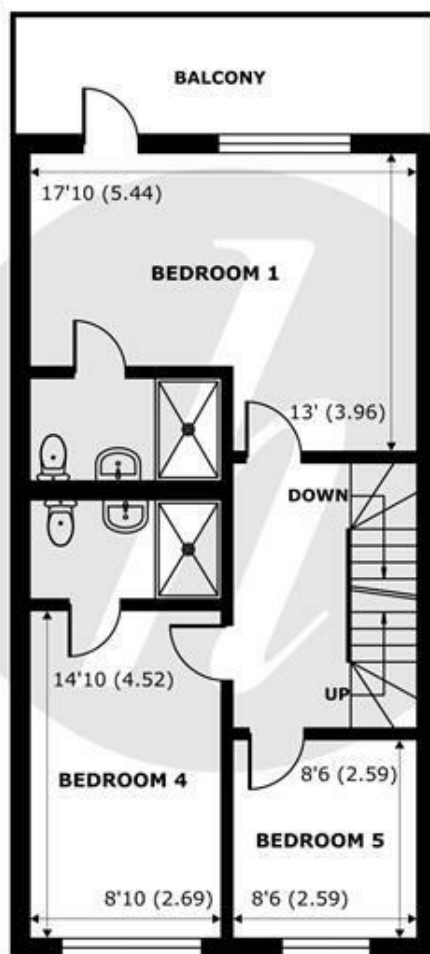


Features

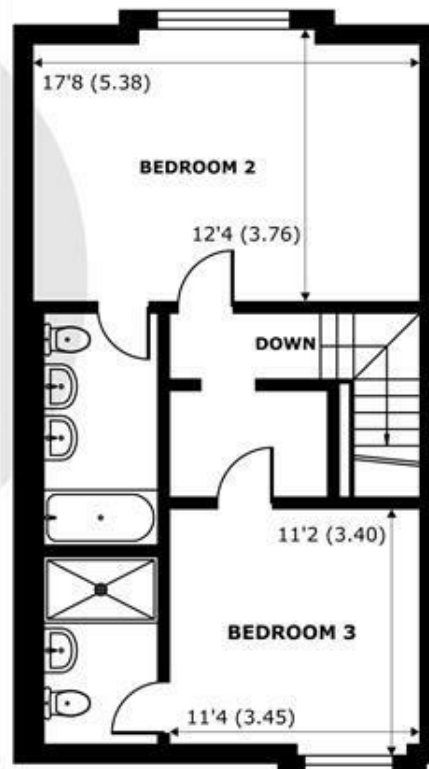
- Collection of 4 beautiful Newbuild Townhouses by Prestigious Developer, BellView Group
- 3 Further Double Bedrooms, 3 Ensuite Bathrooms
- Large Open Plan Kitchen/ Dining Room/Reception Room
- Utility Room with WC
- Off Street Parking for Two Cars
- Principal Bedroom with En-Suite Bedroom and Terrace
- Study
- Bi-Fold Doors onto Garden
- Town Centre Location
- Available mid October



GROUND FLOOR
abt 824 SQFT (76.5 SQMT)



FIRST FLOOR
abt 712 SQFT (66.1 SQMT)



FIRST FLOOR
abt 649 SQFT (60.2 SQMT)

Vansittart Road, Windsor, SL4

Approximate Internal Area = 1910 sq ft / 177.4 sq m

Approximate External Area = 2185 sq ft / 203 sq m

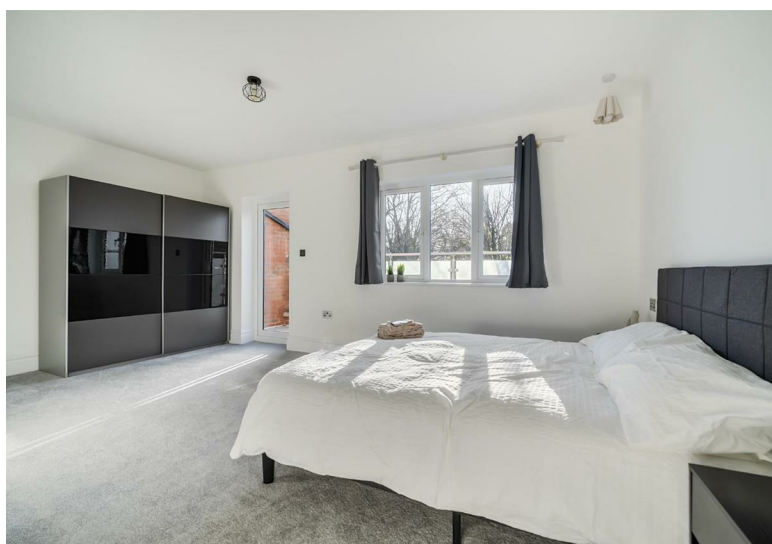
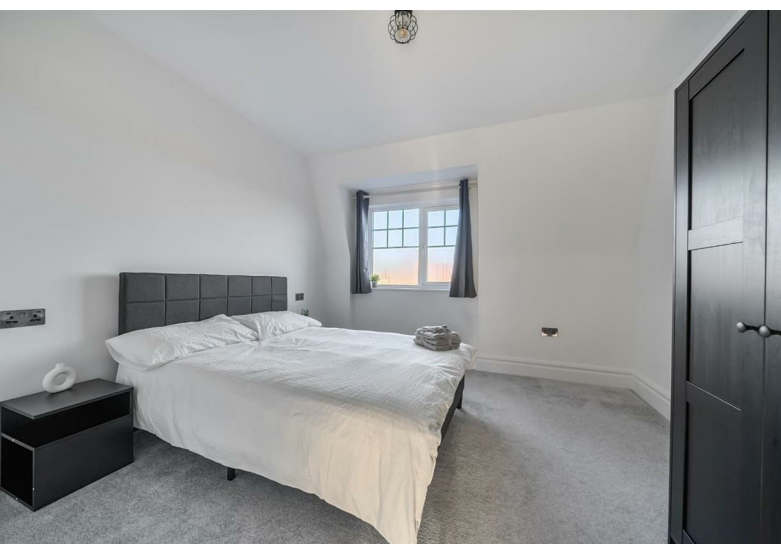
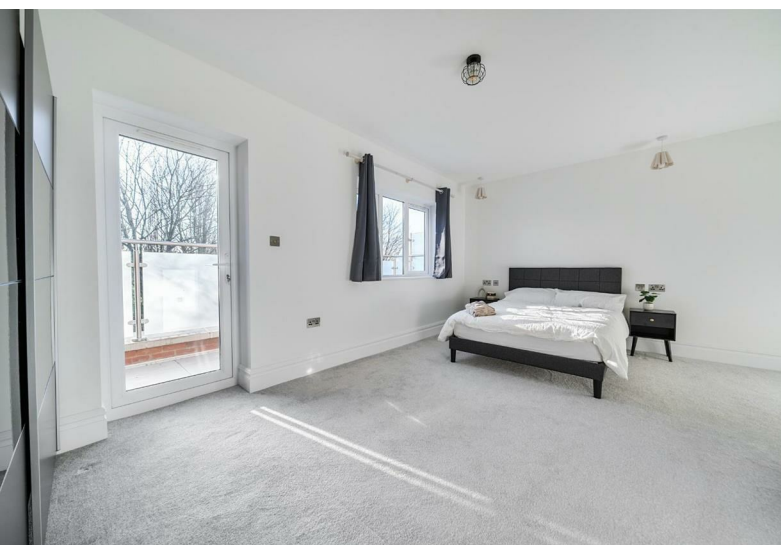
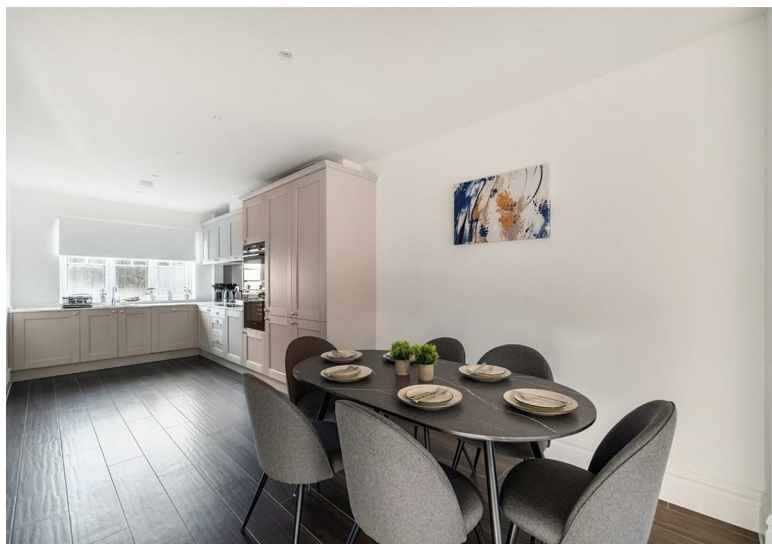
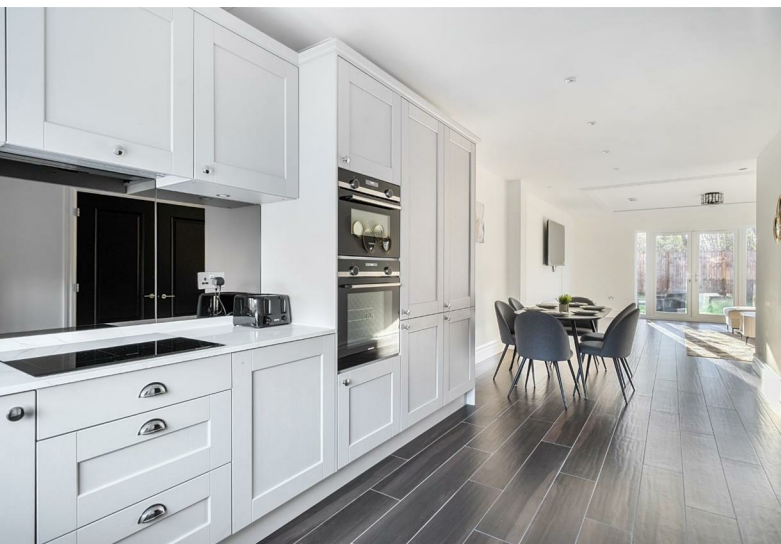
For identification only - Not to scale



Certified
Property
Measurer

Floor plan produced in accordance with RICS Property Measurement Standards incorporating International Property Measurement Standards (IPMS2 Residential). © nichecom 2024. Produced for Hardings. REF: 1164092





11 High Street, Windsor, Berkshire, SL4 1LD,
T: 01753 833 118 | E: info@hardings.co.uk
www.hardings.co.uk

